

Louth Newry/ Mourne

Delivering a
Sustainable Future

Issues



- The need to drive and manage the development of the primary urban structures while still protecting the importance of the rural character of the county.
- Realising the potential of Dundalk/Newry as the regional gateway of the North East within the context of the M1/A1 corridor.
- Harnessing the potential of the Dublin/Belfast economic corridor for the benefit of the Region,
- The need to maintain competitive edge in the regional and national economy while addressing the overdependence on the traditional manufacturing industry prevalent throughout the area
- Understanding and preparing for the consequences of the economic circumstance facing both jurisdictions.
- The need to address issues of crime, law and order, access to health, education and affordable housing.
- Tackling the levels of social disadvantage and crime evident in throughout the region.
- The need to find a forum to speak with one voice on issues of mutual concern and interest.



❑ **Newry-Dundalk Attributes and Assets**

- **Long history of co-operation**
- **Shared environmental resource**
- **Access to an all-island market**
- **Improving transport infrastructure**
- **World class cultural heritage**
- **Reputation for entrepreneurship**
- **Track record in securing funding**



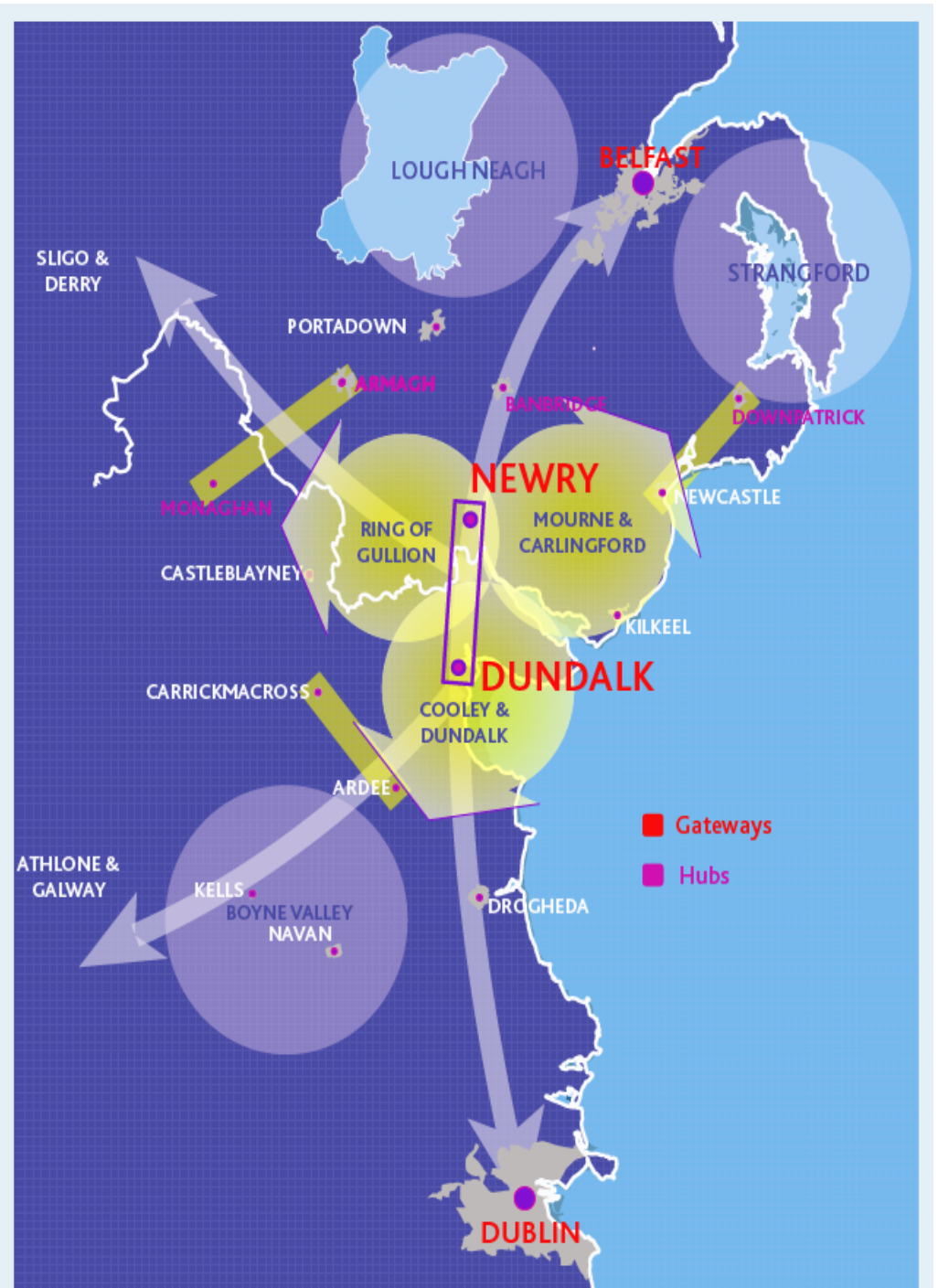
□ Newry-Dundalk Platform for Co- operation

- Economic competitiveness
- Sustainable development
- Natural and cultural heritage
- Managing the resource
- Social cohesion
- Infrastructural investment
- Up-skilling

❑ Delivering the Twin City

An integrated and coherent spatial strategy

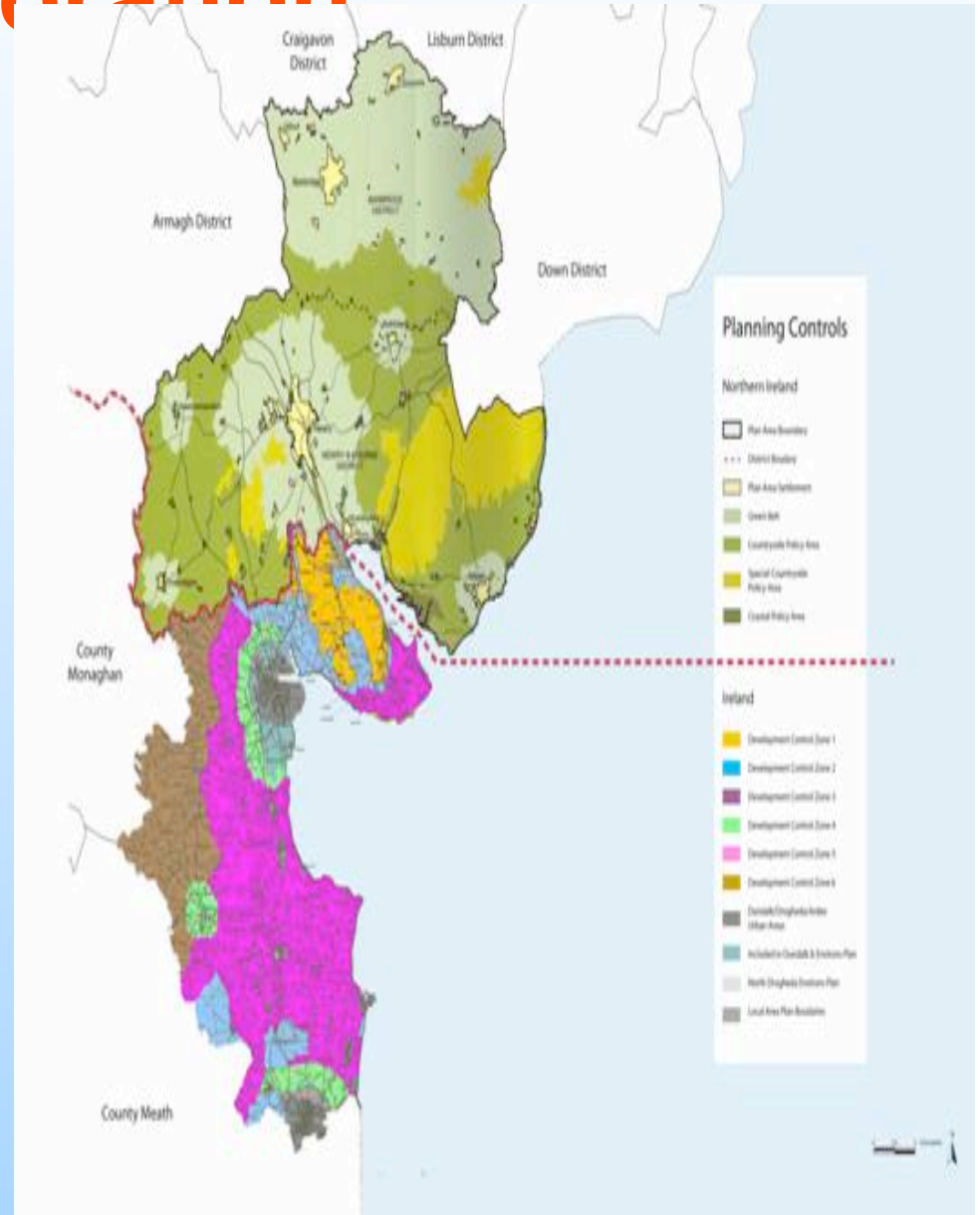
- **A co-ordinated approach to sustainable economic development**
- **Joint actions to implement common objectives**
- **Creation of common interjurisdictional databases**
- **Harmonisation of legal and institutional frameworks**



□ Building Cross-Border Collaboration

Cross-cutting themes

- Joined up planning and resource management
- Infrastructure provision and investment linking into M1/A1 corridor
- Skills, education and training programmes
- Common data sets, assembly and analysis of information



❑ Building Cross-Border Collaboration

Key Strategic Cross Border Projects

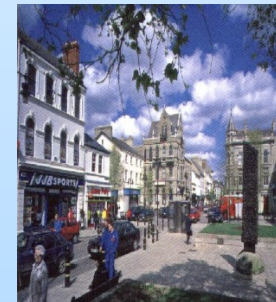
- A Dundalk/Newry Centre of Excellence to create a sustainable energy communities linked to the work of SEI and EU Concerto funding which is positioning base Dundalk 2020 as an exemplar for the island as a whole.
- A Newry-Dundalk cross-border international services zone linked to international financial services that will create additional tertiary employment.



❑ Building Cross-Border Collaboration

Key Strategic Cross Border Projects

- Geo-tourism and the management of a shared landscape and natural heritage to safeguard the geological assets and natural resources of the Mourne, Coolies, Slieve Gullion and Carlingford Lough, and develop the tourism potential of the sub-region.
- A coherent regeneration strategy for the older areas in Newry and Dundalk, to promote the distinctiveness of the two cities, further complementarities of their respective urban function and improve their liveability





Proposed Approach

- A bottom up approach, led by local government and business leaders, should be reinforced by the top-down commitment from central government Ministers and departments.
- Engagement and commitment from the Northern and Southern administrations are crucial to provide the impetus, guidance and resources needed to implement cross-border interventions in partnership with local governments.
- It is proposed that the two jurisdictions continue with the existing co-operation by building on the light and flexible coordination structures that has evolved during this research study.



Proposed Approach

Going forward

- Align local initiatives and priorities to major government policies and activities that will take place between the two governments and the European Territorial Co-operation agenda 2007-13
- Build upon the civic, public and business leadership in Newry-Dundalk to bring added regional benefits
- Powerful example of how voluntary inter-jurisdictional co-operation operates and can benefit other local governments faced with similar challenges



Implementation/Deliverables

Going forward

- The ICLRD research has identified the effective sub-regional model with a cross-jurisdictional, cross-border dimension based on stakeholder engagement
- Implementation of the Newry-Dundalk Twin City Regional Strategy has the potential to yield mutual benefits and result in a fully functioning twin city region and shared gateway.
- Need to show the strategic leadership that is necessary in moving from concept to strategy and implementation

Change is inevitable.....

Progress is not.....

