



**Eighth Annual ICLRD Conference**  
Cooperating Across Boundaries: Resilience, Imagination,  
Vision... and Information

## The Role of Planning in Creating Resilient Places

**Deborah Peel**  
Professor of Planning Research & Scholarship  
School of the Built Environment

**7th February 2013**

BELFAST ■ COLERAINE ■ JORDANSTOWN ■ MAGEE

---

---

---

---

---

---

---

---



---

---

---

---

---

---

---

---



---

---

---

---

---

---

---

---



---

---

---

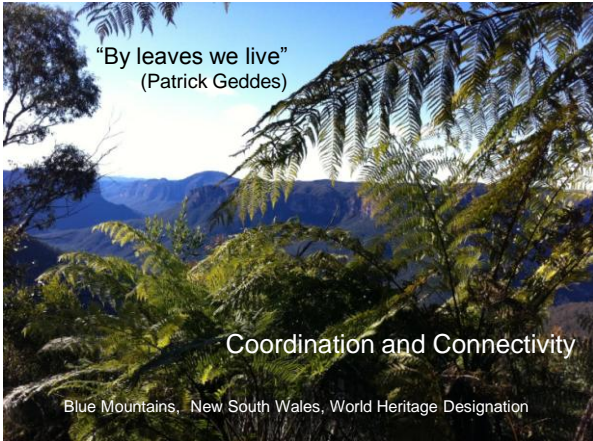
---

---

---

---

---



---

---

---

---

---

---

---

---



---

---

---

---

---

---

---

---



"As change becomes more rapid and discontinuous, it is crucial that there are people in the profession that are able to turn problems into opportunities, while acknowledging the contradictions.

Often, this involves seeing things from a new perspective and breaking away from traditional ways of thinking that may have lost their meaning."

(Higgins and Morgan, 2000: 117).

Paparazzi, Bratislava

---

---

---

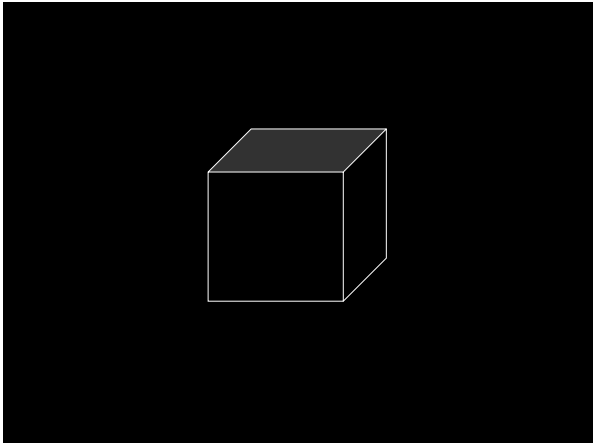
---

---

---

---

---



---

---

---

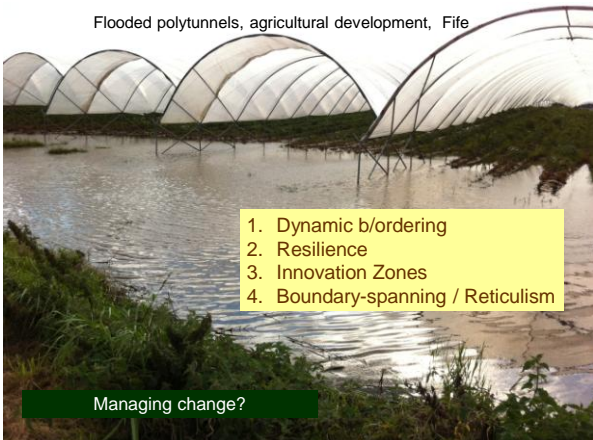
---

---

---

---

---



---

---

---

---

---

---

---

---



---

---

---

---

---

---

---

---



Promenade, Porthcawl  
South Wales

---

---

---

---

---

---

---

---



---

---

---

---

---

---

---

---

The Scottish Borders



---

---

---

---

---

---

---

---

Co. Fermanagh



---

---

---

---

---

---

---

---

Baldovie Industrial Estate, Dundee, Scotland



---

---

---

---

---

---

---

---



Ayr Town Centre, Scotland

---

---

---

---

---

---

---

---



Mother and Child, Cumbernauld Town Centre, North Lanarkshire

---

---

---

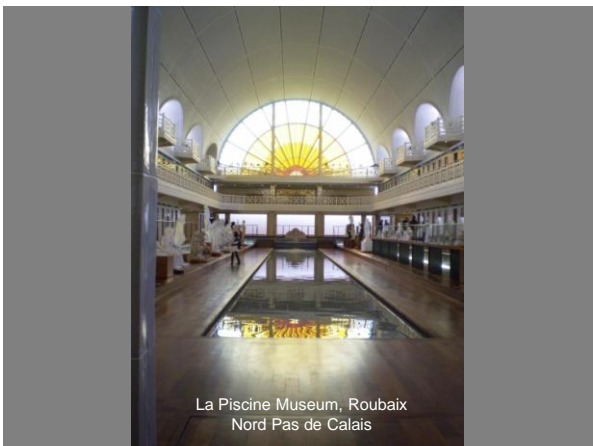
---

---

---

---

---



La Piscine Museum, Roubaix  
Nord Pas de Calais

---

---

---

---

---

---

---

---



---

---

---

---

---

---

---

---



---

---

---

---

---

---

---

---



---

---

---

---

---

---

---

---



Gated Community, Brighton

---

---

---

---

---

---

---

---



Guarded Community, Selangor, Malaysia

---

---

---

---

---

---

---

---



Bristol, England 2012

---

---

---

---

---

---

---

---






---

---

---

---

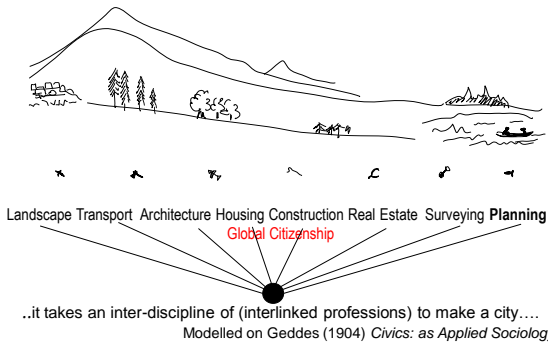
---

---

---

---

### Contemporary Professionals




---

---

---

---

---

---

---

---

## 1. Dynamic B/ordering

"Through their territoriality, political boundaries inscribe a state-centred order in space, both materially and discursively", whilst simultaneously affording a "dynamic b/ordering process"

(Novak, 2011: 743).

Shorelines  
Jordanstown Loughshore Park

---

---

---

---

---

---

---

---




---

---

---

---

---

---

---

---



## 2. Resilience

- Construction
- Cities
- Communities
- Local government
- Thinking

---

---

---

---

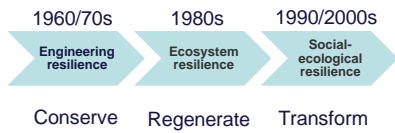
---

---

---

---

## Resilience



(Based on Folke, 2006)

---

---

---

---

---

---

---

---








Social-Ecological resilience thinking requires:

1. New factual knowledge
2. Changes in norms, values and beliefs
3. Increased trust and openness to alternative worldviews

(Lebel *et al.*, 2006)

The Talking Tree  
Newtownabbey Borough Council



---

---

---

---

---

---

---

---

Eden Project, Bodelva, St Austell, Cornwall



3. Innovation Zones

---

---

---

---

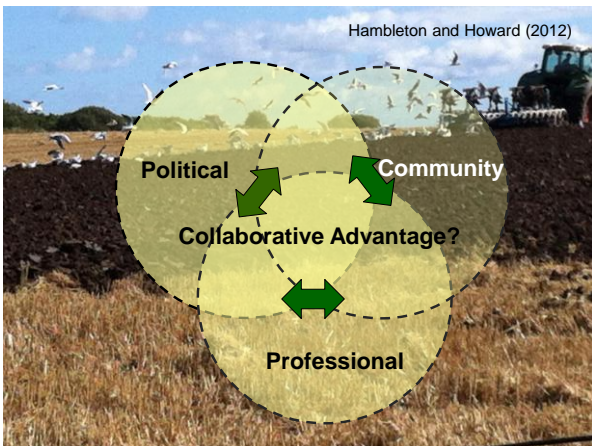
---

---

---

---

Hambleton and Howard (2012)



Political

Community

Collaborative Advantage?

Professional

---

---

---

---

---

---

---

---




---

---

---

---

---

---

---

---




---

---

---

---

---

---

---

---




---

---

---

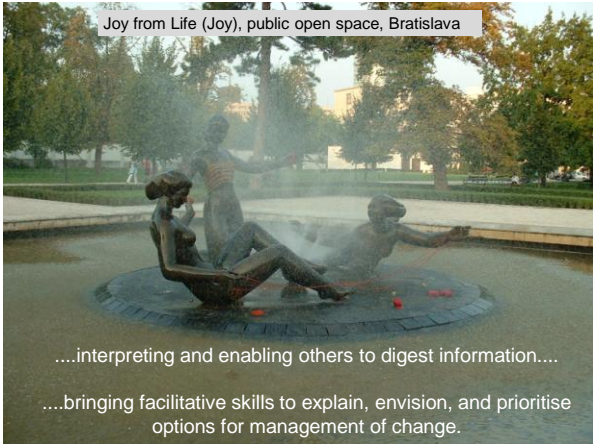
---

---

---

---

---




---

---

---

---

---

---

---

---



A planned city is fundamental to achieving a resilient, green, inclusive, productive, safe and healthy urban development.

This requires planning processes and political frameworks that harness the city's assets and potential.

Sustainable planning entails participatory decision making processes and particular attention to development that balances social, environmental and economic needs.

---

---

---

---

---

---

---

---




---

---

---

---

---

---

---

---