

Environmental Sensitivity Mapping

Ainhoa González, School of Geography, University College Dublin

Collaborative partners



Ainhoa González...Anna Rymzsewicz, Christina Kelly, David Jordan



Justin Gleeson, Eoghan McCarthy...Katie Goodwin

Steering Committee: Tadhg O'Mahony (EPA), Tara Higgins (EPA), Cian O'Mahony (EPA), Gemma Weir (NPWS), Bernie Guest (Waterford Co.Co.), Saeed Khan (RPS), Des Cox (EirGrid), John Mc Cann (SEAI), Maria Byrne (OSi), Paul Scott (DHLPG)

EPA STRIVE Research Programme & Ordnance Survey Ireland



EPA SEA Team



SEA and Spatial Planning



- Population and human health
- Biodiversity, flora, fauna
- Air and climate
- Soils and geology
- Water
- Landscape
- Cultural heritage
- Material assets
- Inter-relationships

Multiple considerations, spatial implications, consultation

Spatial evidence-base for SEA and planning decisions

- ✓ Assessment consistency and transparency
- ✓ Intrinsic environmental conditions > susceptible to change
- ✓ Early-warning of potential land-use conflicts



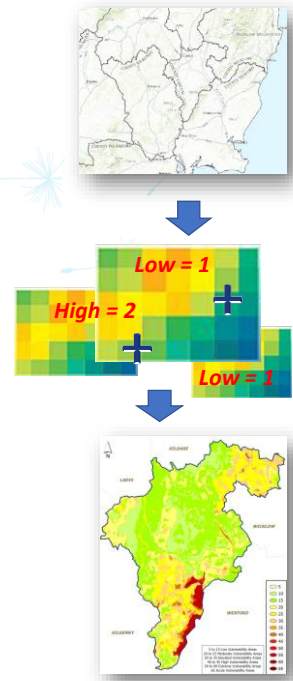
ESM Widget Methodology

Multi-criteria spatial analysis

- Weighted linear algorithm
- Aggregation of multiple criteria
- Incorporation of stakeholders concerns or importance values in the form of weights

$$ES = \sum_{j=1}^n W_j V_j$$

where ES = Environmental Sensitivity
 W_j = Environmental susceptibility of factor j according to scientific scores
 V_j = Environmental significance of factor j according to public/stakeholder opinion



Over 100 SEA-relevant Geospatial datasets

Air and Climate <ul style="list-style-type: none"> • Air zones • Coal restricted areas • Historical flood extents • Soil carbon (eco serv) • Vegetation carbon (eco serv) • Water retention (eco serv) • Wind speeds
Biodiversity, Flora & Fauna <ul style="list-style-type: none"> • Ancient woodlands • Annex I habitats (Habitats Direct) • Birdwatch sensitivity (to windfarms) • Coastal habitats – Saltmarshes • Contributions to pot. ecological networks (eco serv) • Forest inventory • Legally protected and policy relevant species (eco serv) • Margaritifera sensitive areas • Natural Heritage Areas (NHAs) • Proposed NHAs • Salmonid waters • Special Areas of Conservation (SACs) • Special Protection Areas (SPAs) • Terrestrial biodiversity (eco serv) • Woodland habitats
Cultural Heritage <ul style="list-style-type: none"> • Irish landmark trust • Museums, collections and archives • NIAH • Sites and Monuments Record • Walled towns • World Heritage Sites

Landscape <ul style="list-style-type: none"> • Landscape character areas
Material Assets <ul style="list-style-type: none"> • Active quarries • Airfields and airports • Broadband access • Current wind farms • Discharge licences • Extractive industries register • Historic mine districts • IPPC licences • Landfill sites • Licensed waste facilities • Ports • Railway network • Road network • Settlements • Waste water treatment plants and status
Population and Human Health <ul style="list-style-type: none"> • Disability • General health • Pobal HP Deprivation Index • Housing stock (vacant & holiday homes) • Travel to work >30min and >1hr • Labour force unemployed • Population change (percentage and total) • Population density per Km² • WFD RPA Drinking water (lakes, rivers and groundwater)

Soils and Geology <ul style="list-style-type: none"> • Bedrock • CORINE landcover • Geoparks • Geosites • Landslide events and susceptibility • Mineral locations • Outcrops • Peat bogs • Soil permeability • Soils
Water <ul style="list-style-type: none"> • Aquifer vulnerability • Bedrock aquifer • Biological Q values • Hydrometric areas • Groundwater source protection areas • Wetlands • Water abstraction points • WFD high status objectives • WFD risk • WFD status • WFD RPA: Nutrient sensitive WFD RPA: Recreational waters • WFD RPA: Shellfish areas • WFD RPA: Water dependent habitats (SACs, SPAs) • Water management Units

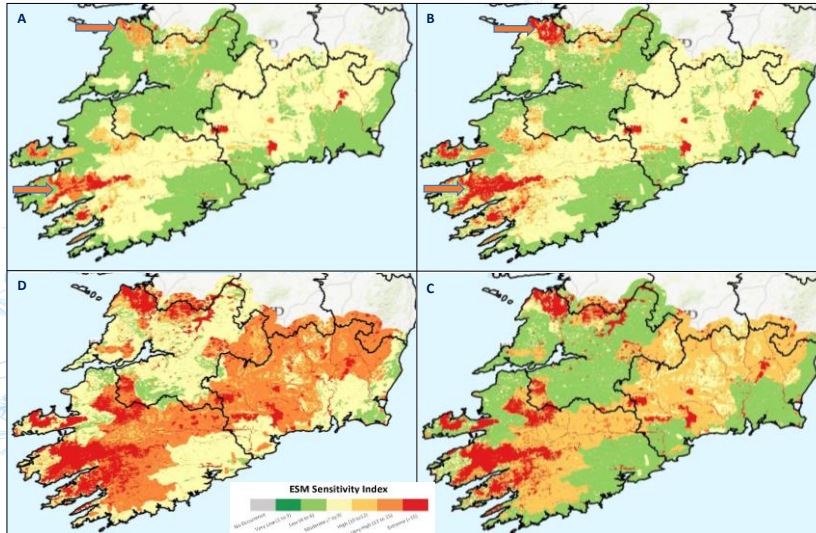
Scientific Scores

- Based on conservation status, quality and risk
- Extensive consultation
- 3 stakeholder workshops – development and testing of the webtool
- Over 40 stakeholders from government, local authorities, consultancies...SEAI, NPWS, NIEA, EirGrid...



Sensitivity Scores 1=Low, 2=Medium, 3=High	1	2	3
Population and Human Health			
% Population change 2006-2011 EDs			
• Decreasing			
• Increasing			
Population density per sq km 2011 SAs			
• High			
• Low			
Total population 2011			
WFD RPA Groundwater drinking water			X
WFD RPA Surface water drinking water (Lakes)			X
WFD RPA Surface water drinking water (Rivers)			X
Biodiversity, Flora and Fauna			
Ancient woodlands			
• Ancient Woodland			X
• Possible Ancient Woodland			X
• Long-established Woodland (LEW I)		X	
• Long-established Woodland (LEW II)		X	
Habitat Directive Annex I Habitats			X
BirdWatch sensitivity (to wind energy dev.)			
Coastal habitats (Saltmarshes)		X	
Forest Inventory and Planning System			
• Deciduous	X	X	
• Coniferous			
Margaritifera sensitive areas			
• Catchments of SAC populations listed in S.I. 296 of 2009			X
• Catchments of other extant populations			X
• Catchments with previous records of Margaritifera but current status unknown		X	
Natural Heritage Areas			X
Proposed Natural Heritage Areas		X	

Contextualising Sensitivity



(a) biodiversity, flora and fauna and water sensitivities; (b) sensitivities associated biodiversity, water, cultural heritage and soils where all have the same weight/importance; (c) sensitivities associated with biodiversity, water, cultural heritage and soils where the biodiversity themes is given greater importance (i.e. a weight of 2); and (d) sensitivities associated with biodiversity, water, cultural heritage and soils where the biodiversity and water themes are given greater importance (i.e. a weight of 2).

ESM Output

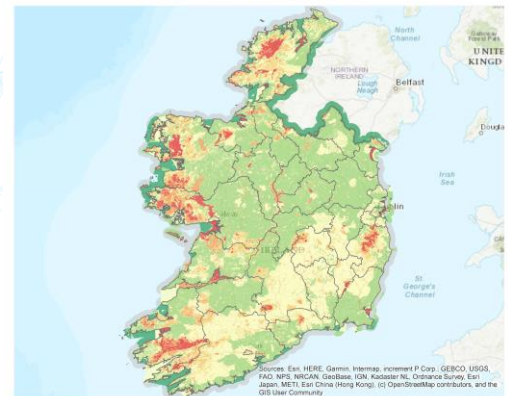
Transparency

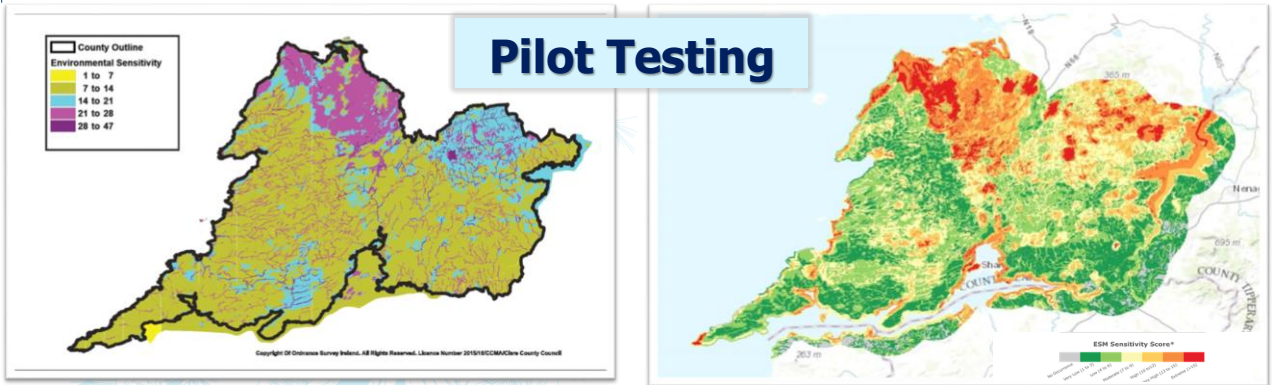
- Map creator
- Date
- Selected datasets
- Applied weights

Comparability

- Transboundary
- When selecting same criteria and weights

National SEA Analysis (NPF)





- Quicker times
- No GIS expertise needed
- Better and comparable results
- Easier to analyse outputs

- Data scale and availability (e.g. LCAs)
- Double counting
- Weight for full exclusion
- Assessment scope

"The ESM output compares well and may actually be better than the in-house process undertaken for the County Development Plan SEA."

"Helpful tool for overall visual appreciation - really depends on the datasets."

"The sensitivity identifies areas where development would need to be carefully considered and sensitively planned."

"(...) Scale and resolution would however remain issues."

"Access to multiple datasets all in one platform is an excellent resource."

"I'm not sure it does anything more than what some local authorities do at this scale which is probably down to the detail of the datasets."

Real Life Applications: NPF & RSESS

Table 5.16 – Data Variables used in the ESM Mapping

Theme	Weight	Variables
Biodiversity, Flora and Fauna	2	Special Areas of Conservation, Special Protection Areas, Natural Heritage Areas, Proposed Natural Heritage Areas, <i>Marginitifera</i> Sensitive Areas, Ancient Woodlands, Annex I Habitats, Coastal Habitats - Saltmarshes, Forest Inventory Planning System, Salmonid Waters, Woodland Habitats
Population and Human Health	1	WFD RPA Surface Water Drinking Water (Lakes), WFD RPA Surface Water Drinking Water (Rivers)
Soils and Geology	1	Geoparks and Geosites, Peat Bogs, Soil Permeability
Water	1	Aquifer Vulnerability, Bedrock Aquifer Susceptibility, Groundwater Source Protection Areas, Wetlands, WFD Groundwater Status, WFD Lake Status, WFD River Status, WFD RPA Nutrient Sensitive Areas (Lakes), WFD RPA Nutrient Sensitive Areas (Rivers), WFD RPA Recreational Waters Coastal, WFD RPA Recreational Waters Lakes, WFD RPA Water Dependent Habitats (SPAs), WFD RPA Water Dependent Habitats (SACs)
Air and Climate	1	Historical Flood Extents
Cultural Heritage	1	National Inventory of Architectural Heritage, Record of Monuments and Places

Source: AIRD ESM Webtool with user-selected input variables.

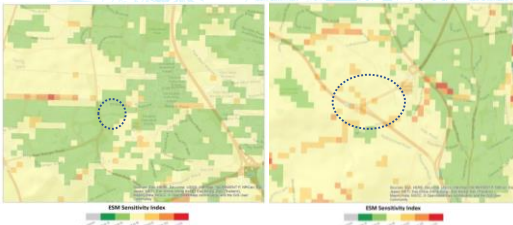
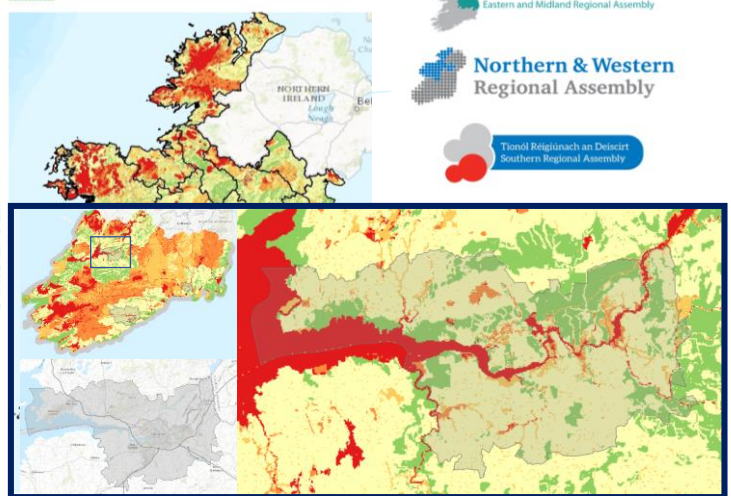


Figure 5.23 – ESM for Ireland



"In preparing the NPF, an Environmental Sensitivity Mapping (ESM) tool was used in the SEA and environmental assessments. ESM is a method for identifying at a strategic level, environmentally sensitive areas and to help inform cumulative and in-combination effects on the environment. It also provides a visual overview of the relative sensitivity of areas, particularly where they overlap, in order to provide a more strategic and informed approach to planning" (NPF, Chapter 11.1, p.15).

Game changer?

- **Publicly available**
- **Evidence-based assessments and decisions**
- **Efficiency**...time and cost savings
- **Good governance - consistency, transparency, comparability**
- **Exploratory** rather than definitive answers...data limitations, subjective but not arbitrary weights influencing outputs
- **Future developments**
 - Offshore (marine data)...**Northern Ireland**
 - Support tool for the preparation of LARES (SEAI-funded)



SEA and planning support tool

ESM Webtool

*Bringing environmental assessment
to your fingertips*

www.enviromap.ie