

The role of Infrastructure in Economic Recovery

Martin Spollen, Strategic Investment Board Limited (SIB)

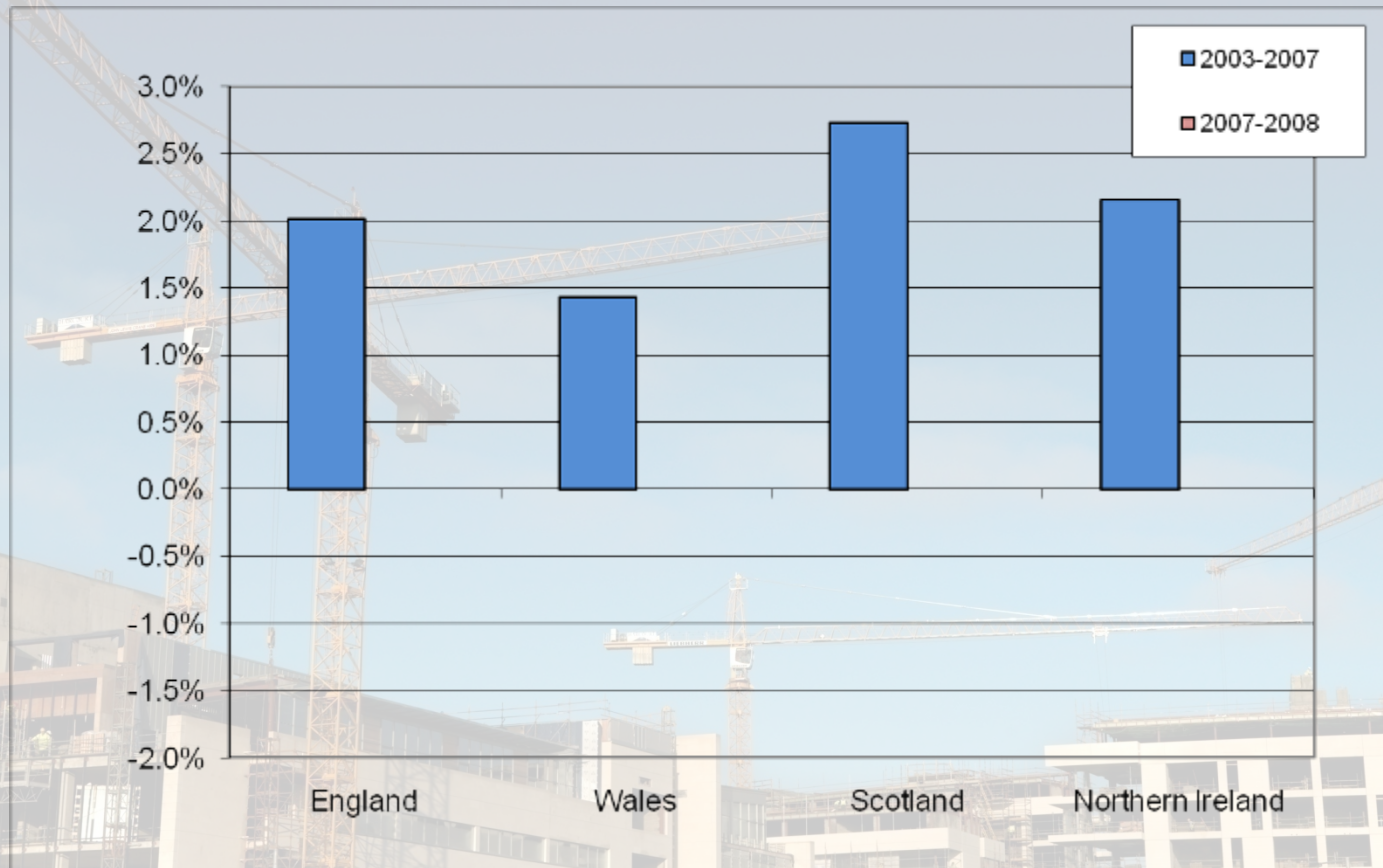
5th Annual ICLRD Conference
January 2010



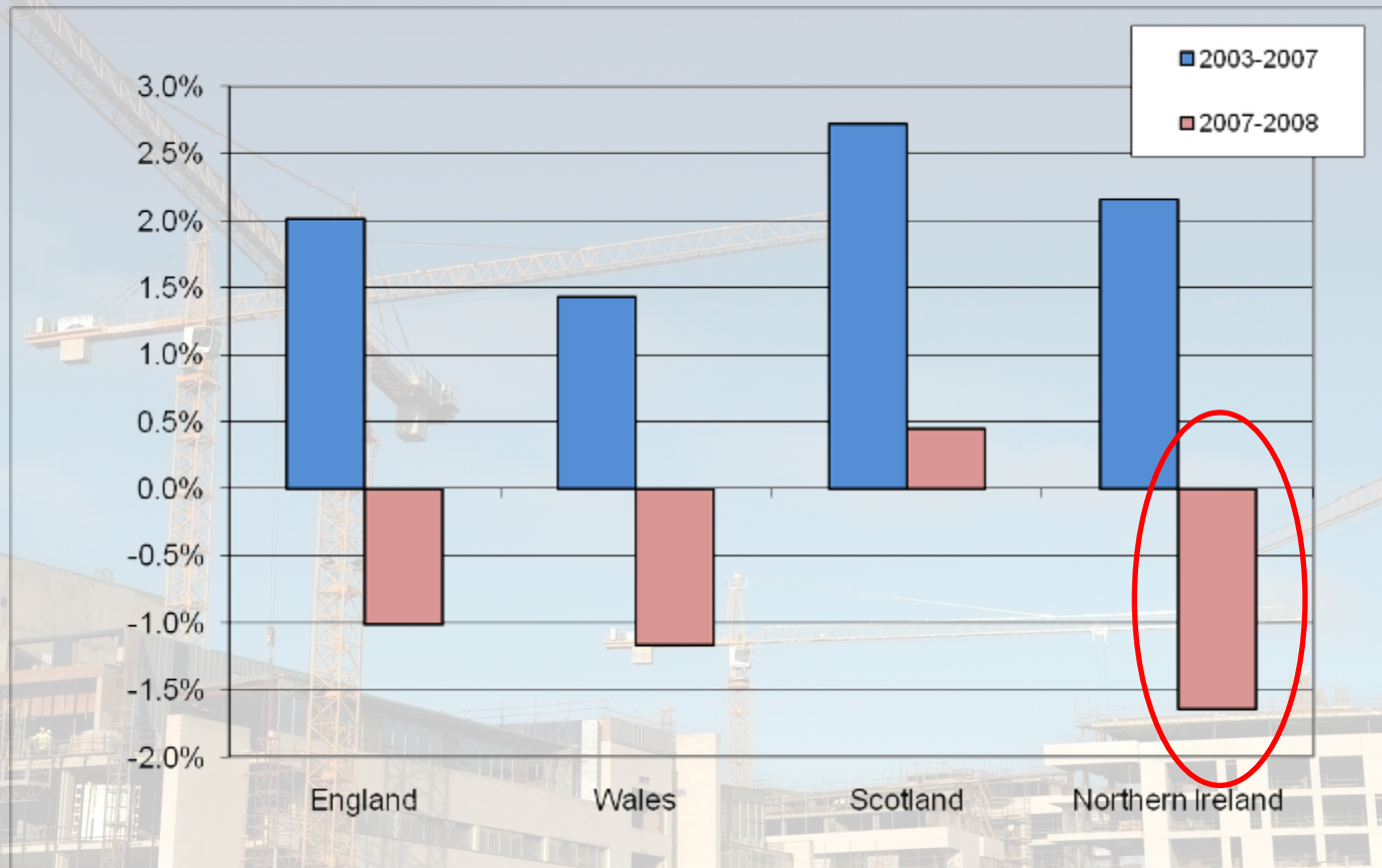
In a nutshell – 2 roles:

- stimulus. Dealing with the more immediate.
- investing. A platform for long term prosperity.

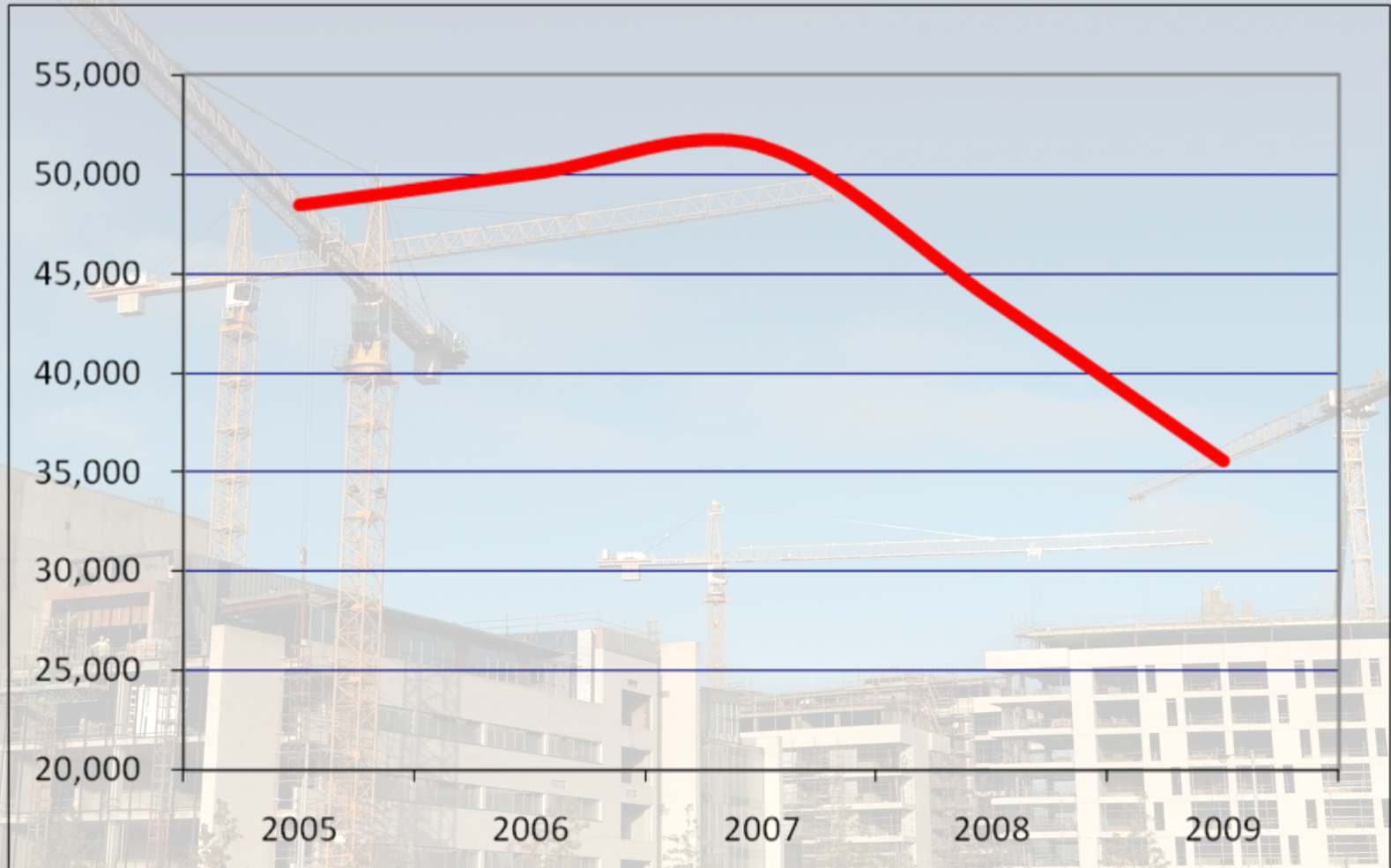
Real per capita growth



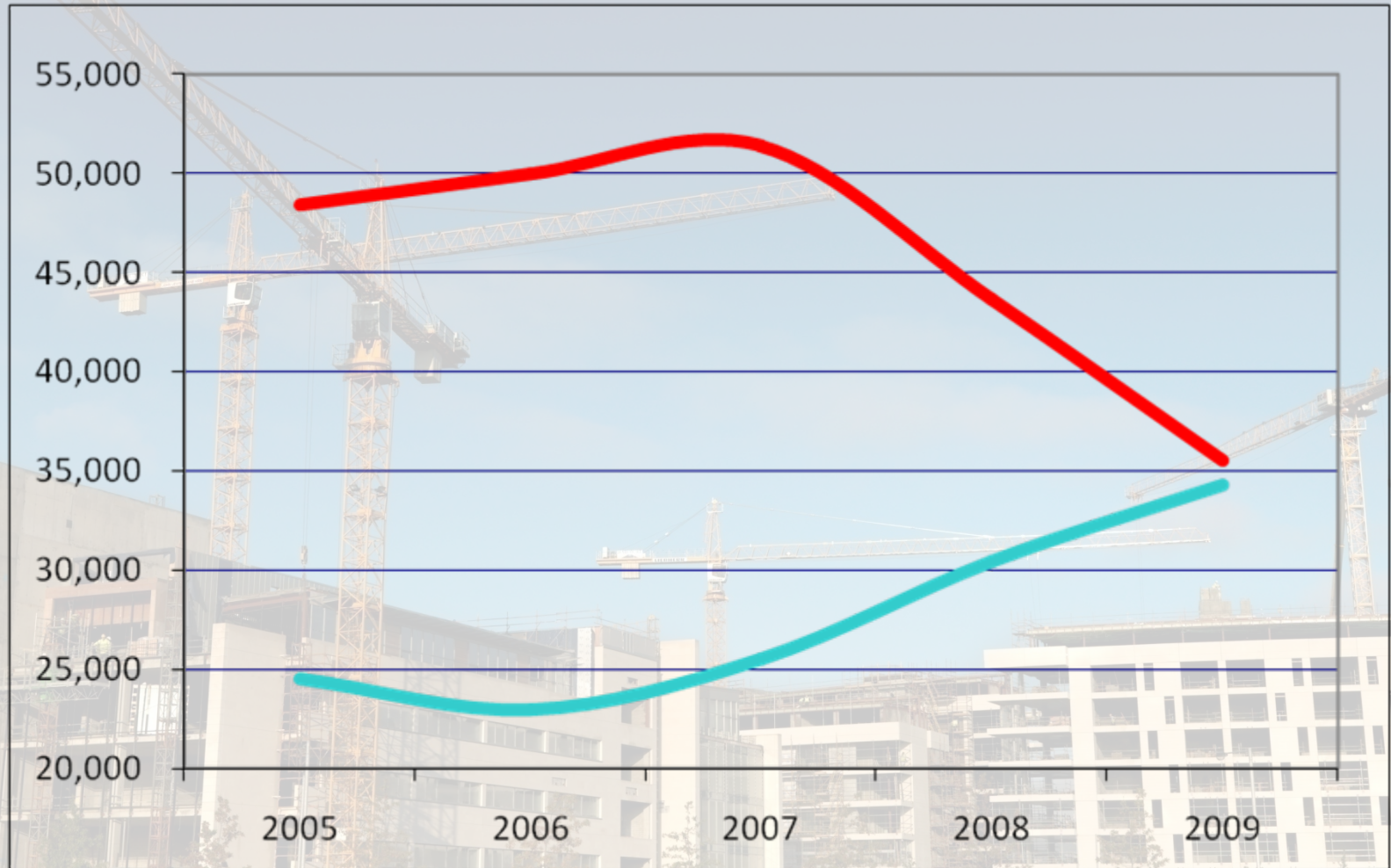
Real per capita growth...recession



Private sector construction jobs



Public stimulus...securing employment





The World is changing:

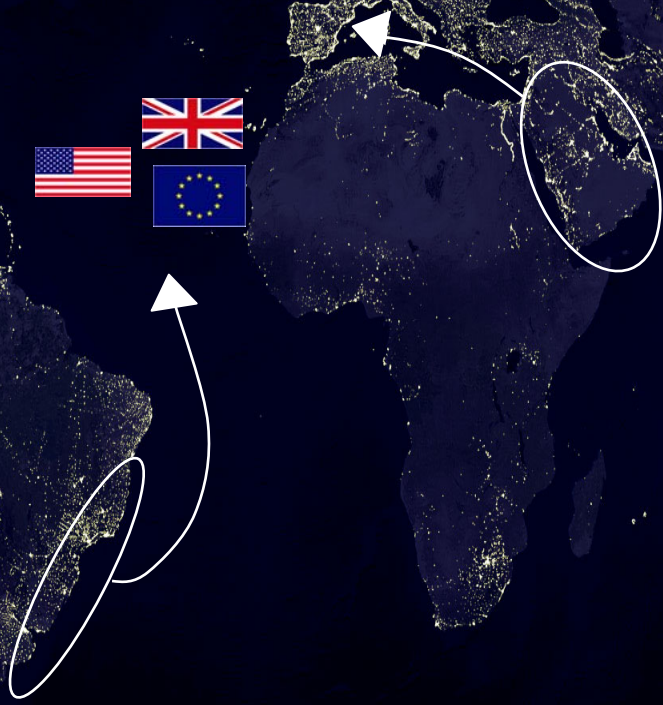
- globalisation, rise of BRICS, mobile investment
- climate change, CO₂, energy security
- communications revolution, Web 2.0
- ageing population
- consumerism, rising expectations
- a changing public expenditure environment



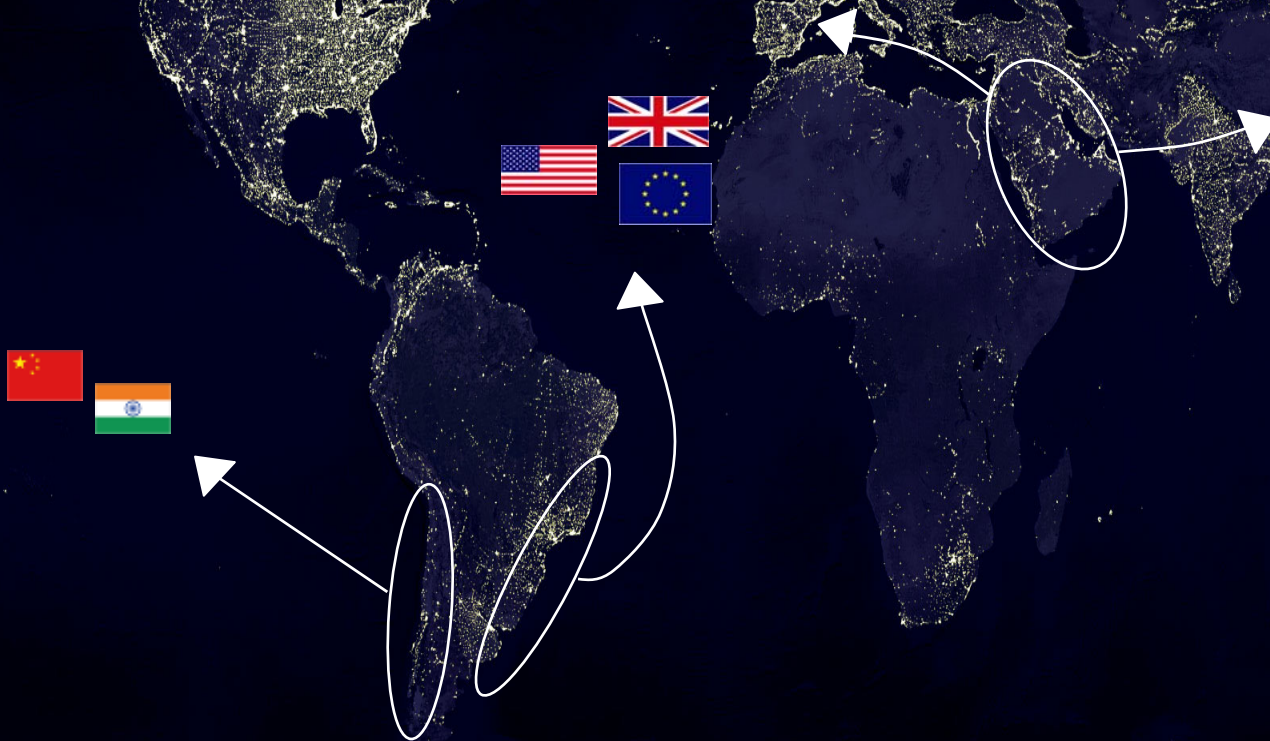
But other places are not standing still:



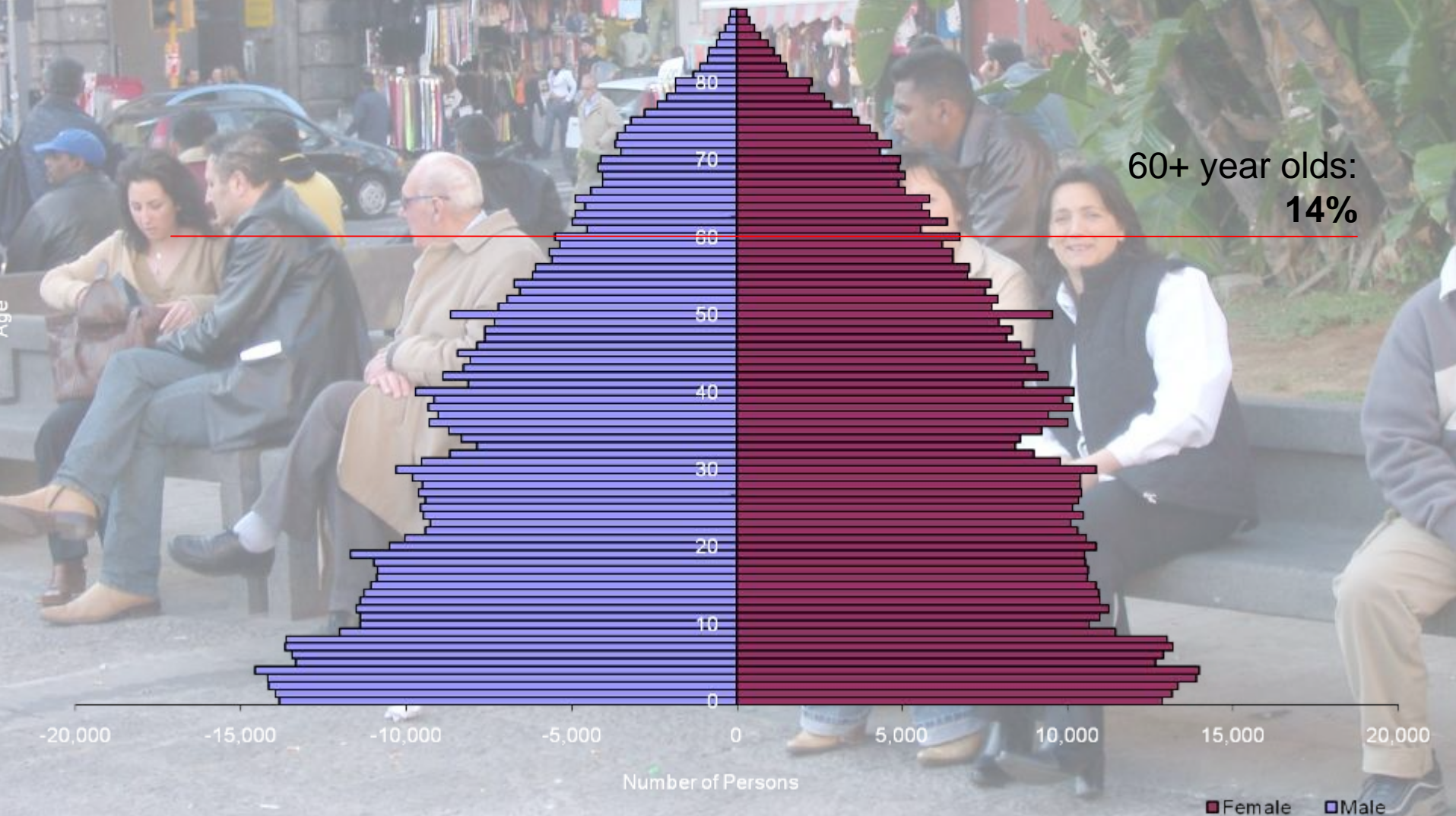
Where infrastructure once advantaged us...



emerging economies are building competing supply lines:



Our population in 1951:



Our population in 2001:



Our population in 2031:





The questions we must ask are:

How do we respond to these forces?

How do we plan for a prosperous future?

What are the factors that seem to define success?

How can we implement these in a regional and island-wide context?

An aerial photograph of a city, likely Glasgow, Scotland, showing a dense urban area with a river winding through it. In the background, there is a large body of water (the harbor) with several ships and industrial structures. The foreground shows a mix of residential and commercial buildings, with a large green field and a road visible in the lower right. A semi-transparent dark box is overlaid on the center of the image, containing text.

‘attractiveness’:

- quality spaces, regeneration
- improved connectivity, work/live
- affordable & efficient public services
- scale - co-operation with neighbours
- image

Belfast...regenerating the economic heart



Westlink

Univ.
Ulster

Clarendon/
City Quay

Titanic Quarter

Victoria Square

Sirocco Quay

QUB Library
Ulster Museum
Lyric Theatre

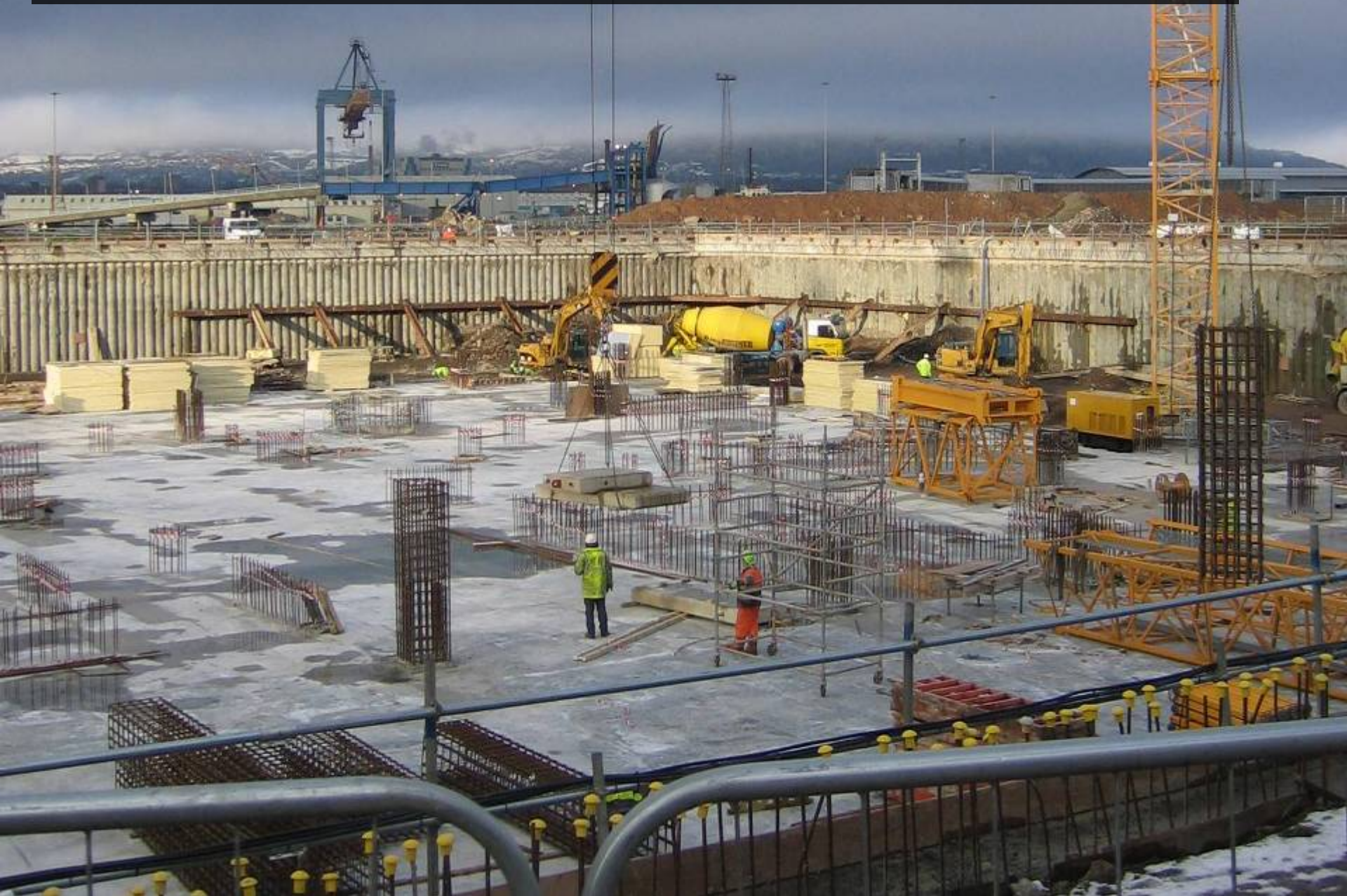
Titanic Quarter...visit, live, work



Titanic Visitor Attraction

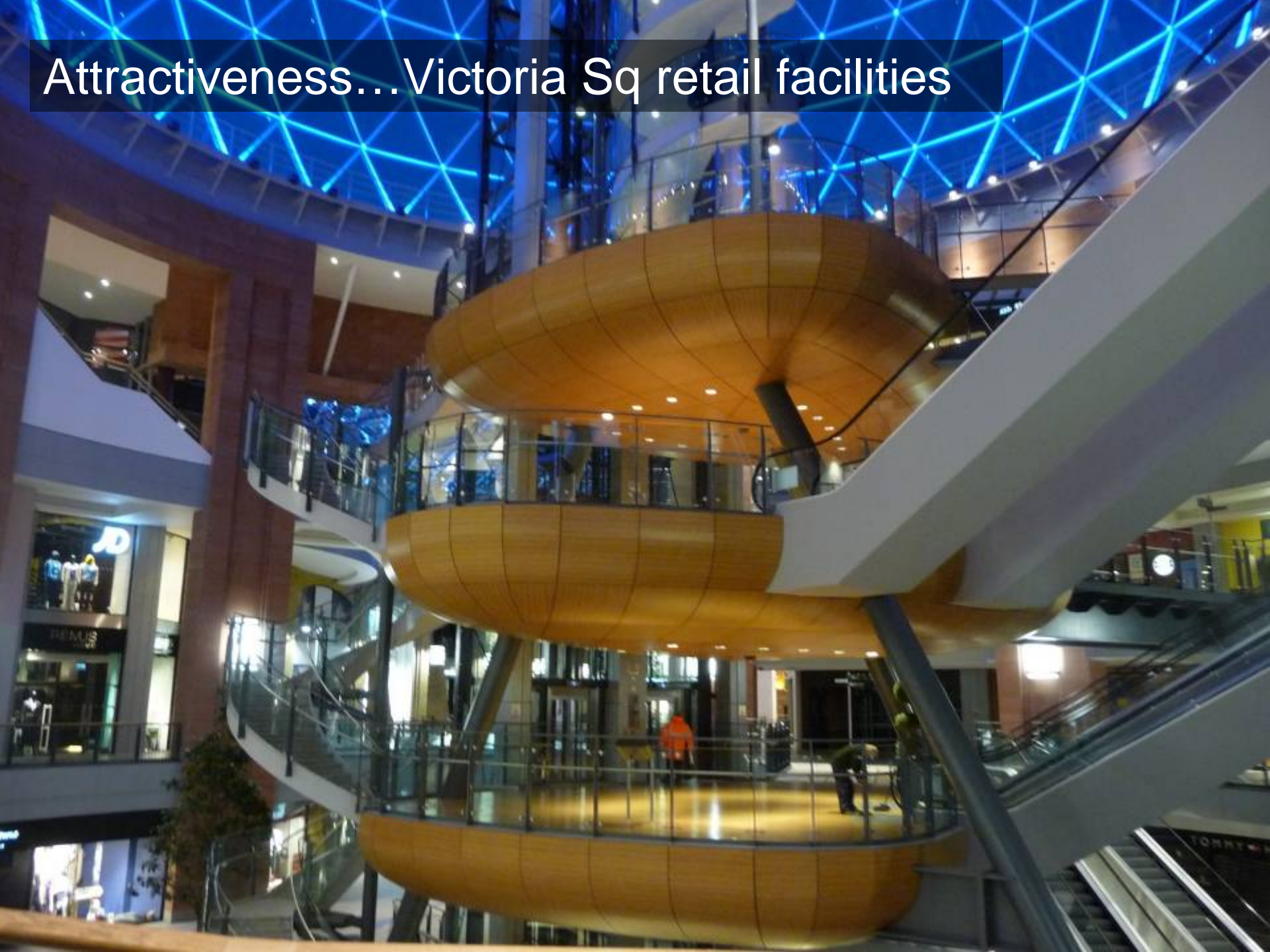


Titanic Visitor Attraction...December 2009





Attractiveness...Victoria Sq retail facilities



Improving connectivity...
Rapid transit



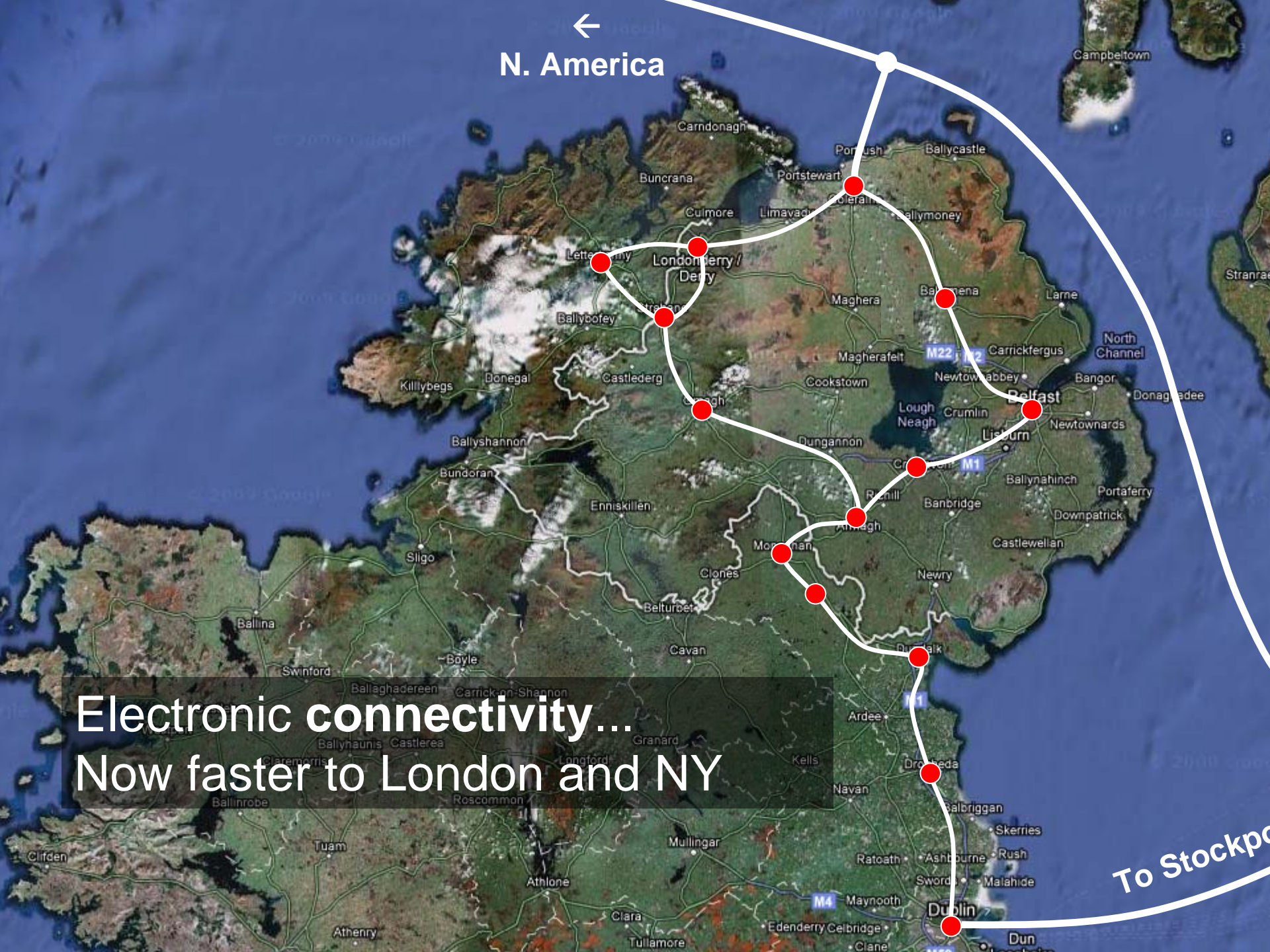
Improving connectivity...
M1-Westlink-M2 improving access to city & ports



Improving connectivity...

A1, A4, A5 inter-regional road schemes





N. America

Electronic connectivity...
Now faster to London and NY

To Stockp...

Investment in the North West



Derry/Londonderry... 'Capital of Culture'



Regeneration...high quality public realm



Regeneration...high quality public realm



Green energy...green jobs

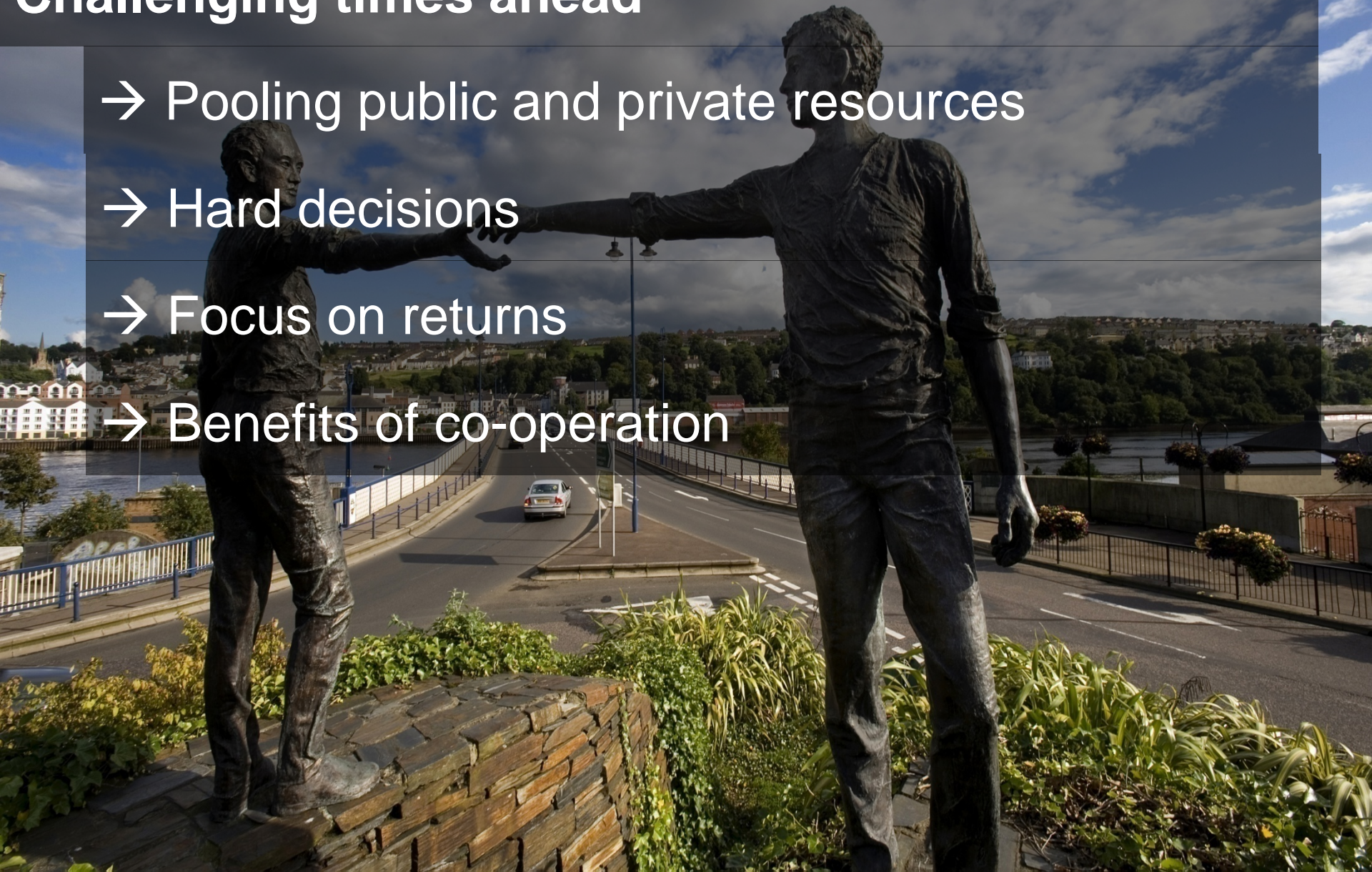


Major area for investment...North & South



Challenging times ahead

- Pooling public and private resources
- Hard decisions
- Focus on returns
- Benefits of co-operation



A bronze statue of two men shaking hands, set against a backdrop of a city and a cloudy sky. The statue is positioned on a stone wall overlooking a road. The man on the left is wearing a dark jacket and trousers, while the man on the right is wearing a light-colored shirt and dark trousers. The background shows a cityscape with buildings and a road with a car. The sky is blue with white clouds.

For more information on public projects, see
www.isni.gov.uk