

THE INTERNATIONAL CENTRE FOR LOCAL AND REGIONAL DEVELOPMENT

The International Centre for Local and Regional Development (ICLRD) is a North-South-U.S. partnership established in 2006 to explore and expand the contribution that planning and the development of physical, social and economic infrastructures can make to improving the lives of people on the island of Ireland and elsewhere. The partner institutions are: the National Institute for Regional and Spatial Analysis (NIRSA) at the National University of Ireland, Maynooth; the School of the Built Environment at the University of Ulster; the Institute for International Urban Development in Cambridge, Massachusetts; and the Centre for Cross Border Studies in Armagh. Each partner brings together complementary expertise and networks on both a North-South and East-West basis – creating a unique, all-island and international centre.

The ICLRD continues to expand its collaboration with other institutions and has built up close working relationships with individual faculty and researchers from universities and research institutions including Queens University Belfast, Mary Immaculate College-University of Limerick, Harvard University, the National Center for Smart Growth Research and Education at the University of Maryland, and HafenCity University Hamburg. In 2013, we also expanded our joint initiatives with other organisations involved in cross-border research and activities including Co-operation Ireland and the Border Regional Authority. The ICLRD is very open to involving other academics and research institutions in its activities.

The Director of the ICLRD is Mr. John Driscoll, the Deputy Director is Ms. Caroline Creamer of NIRSA, NUI Maynooth and the Assistant Director is Dr. Neale Blair of School of the Built Environment, University of Ulster.

In 2013, the ICLRD was supported by the EU's Interreg IVA Programme through the Special EU Programmes Body, the Irish Government through the

Department of Environment, Community and Local Government (DoECLG) and the Northern Ireland Executive through the Department for Regional Development (DRD) and the Department for Social Development (DSD). The ICLRD has, over the years, received funding from the International Fund for Ireland (IFI) as well as commissioned research from Inter *Tradel* Ireland, the Strategic Investment Board (SIB) and the Irish Central Border Area Network (ICBAN).

The ICLRD provides independent, joined-up research and policy advice on cross-border and all-island spatial planning and local and regional development. The Centre plays a proactive role in peace and reconciliation on the island by bringing together policy-makers, practitioners and academics, North and South, to work on common goals in the areas of coordinated spatial planning and social and economic development at local, regional and national levels. It does this through research, policy advice and publications; professional education and capacity building programmes that assist local governments and communities to translate policy into 'on the ground' action; and active outreach and networking that includes conferences, workshops and international cooperation and exchanges to identify best practices.

Stimulating economic growth and improving the living conditions to alleviate and prevent social conflict is at the heart of the Centre's mission. The ICLRD is focused on building the capacity of regional and local authorities, development agencies, border networks and community and voluntary organisations to identify strategic areas of cooperation.

Through its research and professional education programmes, the ICLRD works with policy-makers and local leaders to improve the environments in which people in Ireland, North and South, live and work, with particular emphasis on the needs of marginalised and divided communities. It combines the promotion of regional planning and development

as a tool for competitiveness, with local planning and development as a way to remedy the continuing problems of social disadvantage.

CURRENT RESEARCH PROJECTS

Each year, the ICLRD undertakes *action research* that contributes to a better understanding of the complex all-island and cross-border dynamics and drivers of change in Irish towns and rural areas, including cross-border communities. Since its inception, the ICLRD has organised its work around three spatial scales: EU and all-island; sub-regional, which includes cross-border; and local. Through its activities, the ICLRD is facilitating forums to foster the exchange of experience and best practices. It is also supporting North-South / East-West inter-regional cooperation, including on a cross-border basis, along priorities encouraged by the European Union.

The emphasis of the ICLRD's work programme in 2013 was the delivery of its research programme under the **Cross-Border Spatial Planning Development and Training Network (CroSPlaN)**, an EU INTERREG IVA-funded programme administered by the Special EU Programmes Body. Commencing in February 2013, CroSPlaN II is a programme of research, training and workshops in Northern Ireland and the Southern border counties which operates in association with the Centre for Cross Border Studies as part of the Ireland-Northern Ireland Cross-Border Cooperation Observatory (INICCO).

There are three inter-linked components to CroSPlaN II which will provide sustained support to territorial cooperation in the Irish Border Region. The three elements are:

- Shared Services – to identify opportunities, and operational frameworks, for joint initiatives that improve the delivery of public services; this will occur through action research and two pilot initiatives to demonstrate practical models

for cooperation in delivering front-line and / or specialised services

- Executive Training – building on the successful ICLRD model linking training and animation, to develop and deliver executive training for cross-border councils
- Evidence-Informed Planning – to map the compatible 2011 census data from the Republic of Ireland and Northern Ireland, and develop an updated all-island deprivation index in an on-line, user-friendly format to support collaboration among central government departments across the island

Taken together, these three closely integrated activities will fill an important gap over the next 24 months in improving the effectiveness of public sector cooperation in the Irish border region by providing the necessary tools, models, training and data for mutual benefit.

ADVOCACY AND DEMONSTRATION: EVIDENCE-BASED PLANNING

In 2013, the ICLRD and its partners continued to provide external support to different cross-border activities in local and regional development. These included: the Irish Central Border Area Network's (ICBAN) Spatial Planning Initiative and specifically its Data Capture Project and the development of its *Regional Strategic Framework*; the North West Partnership Board and its potential role in progressing the North West Gateway Initiative; and the data capture and indicators project implemented by the North West Region Cross-Border Group, the SPACEial data capture project.

Providing researchers, policy-makers and practitioners timely access to data and information to better understand the implications of development trends and patterns has been an important part of ICLRD's work since 2007. Under the original CroSPlaN programme, the ICLRD, together with

BORDERLANDS

The Journal of Spatial Planning in Ireland

its sister organisation, the All-Island Research Observatory (AIRO), completed four applied research activities that provide both mapping tools and recommendations on how data and information can be used to monitor the implementation of spatial strategies. These highly interactive mapping tools are available through both the ICLRD (<http://iclr.org/mapping-tools/>) and AIRO (<http://airo.maynoothuniversity.ie/>) websites and include:

- The *All-Island Accessibility Mapping Tool* (2012) maps levels of access to key services across the island in areas such as education, health, transport and emergency services.
- The *All-Island Deprivation Index* (2012) facilitates, for the first time, a comparative analysis of deprivation at a regional level within areas such as the Irish Border Region. This *Index* can supplement the existing indices used within Ireland and Northern Ireland that are incompatible with each other, and help researchers, communities and programmes to better understand the spatial distribution of deprivation. Both AIRO and the ICLRD will further test this methodology with the 2011 Census data for Ireland and Northern Ireland.
- The *Island of Ireland Housing Monitoring Tool* (2011) provides an interactive mapping and querying tool for housing market indicators, combining for the first time data from both Ireland and Northern Ireland. The mapped outputs assist in understanding the spatial implications and outcomes of policy decisions and interventions over time.

The fourth element of this work programme, the research study *Towards a Spatial Monitoring Framework for the Island of Ireland: A Scoping Study* (see p. 110 for further details) is available to download from the ICLRD website.

ICLRD JOURNAL

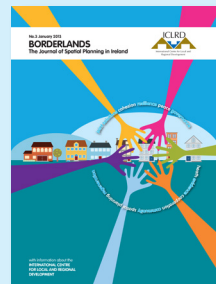
Borderlands: The Journal of Spatial Planning in Ireland is published on an annual basis and covers a range of topics of interest to academics, practitioners and policy-makers involved in spatial planning and local and regional development.

The April 2014 edition of the Journal, available online from the ICLRD website, includes articles on: place-based leadership, planning for a sustainable state, the Gateways and Hubs Development Index 2012, a reflection of fifty years of national and regional planning in Ireland, the need to plan for difference in post-violent conflict societies, and cross-border collaboration among local authorities in the Romania-Hungary border region



The third edition of the Journal, launched at the eighth annual ICLRD conference, included articles on: cross-border health data, the work of the International Fund for Ireland from 1986-2011, the regeneration of Limerick, the planners' toolkit and the importance

of interdependence to overcome fragmentation of processes and actors, territorial cohesion and *EU2020*, spatial planners as managers of change, transport policy and the role of scenario modelling in determining economic development patterns, a transatlantic exploration of planning frameworks and strategies, and local government in transition.

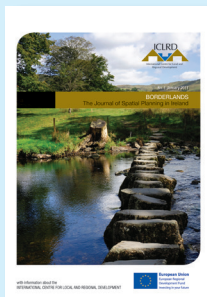


The second issue of *Borderlands: The Journal of Spatial Planning in Ireland* was launched by Frank McDonald, Environment Editor of *The Irish Times*, in January 2012 at the seventh annual ICLRD conference. Articles included in this issue

focused on: cross-border river basin management, pathways to managing regional growth, modelling infrastructure investments, the development of a cross-border deprivation index, marine spatial planning and its role in the management of ocean resources, reinstating 'kids' into planning policy and practice, and the key links between spatial planning, data and housing policies. Copies of the articles are now available to download off the ICLRD website, www.iclrd.org



The inaugural issue of *Borderlands: The Journal of Spatial Planning in Ireland* was launched at the sixth annual ICLRD conference in Sligo on 20th January 2011. The first issue included articles on the challenges of planning and governance reform on both sides of the Irish Border; planning for sustainable communities; balancing private sector interests with the 'common good' in planning; cross-border planning in the Greater Basel Region between Switzerland, France and Germany; and how NGOs and academics in the Boston Region have pioneered new methods of evidence-informed planning. Contributors to the inaugural issue included Professor Peter Roberts (Homes and Communities Agency), Professor Greg Lloyd (University of Ulster), Charlotte Kahn (Boston Indicators Project), Holly St Clair (Metropolitan Area Planning Council) and ICLRD partners. The journal was launched by Mary Bunting and Anne Barrington, Joint Secretaries of the North South Ministerial Council.



officials, elected representatives and community workers from those councils that make up the three cross-border networks: namely the North West Region Cross-Border Network, the Irish Central Border Area Network and East Border Region. Strand 1 of the programme, involving the delivery of five modules between September and December 2013, consisted of a mix of seminars and working group discussions, with issues such as territorial cooperation, community planning, public sector reform, efficiency agendas and customer-centric governance lying at the heart of the programme. Meeting largely in plenary, the 80 plus delegates were afforded the opportunity to network, debate the ongoing local government agenda and its implications for intra- and cross-jurisdictional working, and emerging shared priority themes. At the end of Module 5, delegates had identified six key themes / projects that they wished to focus on during Strand 2 through a series of tailored focus groups.

The end goal of this ten-month programme is the development of a collaborative action agenda; with the councils involved in these plans understanding the operational structures required to translate policy into practice. Strand 2 of the programme is scheduled to commence in February 2014.

Under the original CroSPiAn initiative, the ICLRD held professional education programmes for council officials, elected representatives and the private sector for three areas in the Irish Border Region:

- Irish Central Border Area Network Region (ICBAN)
- The Northwest Region
- Newry-Dundalk 'Twin-City' Region.

Each programme was tailored to help local governments and the business community to engage with the spatial planning agenda and build an awareness of the benefits of regional cooperation among local governments and other key stakeholders in the border region. Each programme introduced carefully selected case studies of international good practices, external speakers

PROFESSIONAL EDUCATION

As part of CroSPiAn II, the ICLRD has developed an executive training programme aimed at council

and facilitated working groups to help participants to: assess their current level of cross-border cooperation; develop suggestions for improvement; and propose institutional mechanisms to promote future collaboration.

ICBAN Region Training Programme: October 2011 – December 2011

This six-module training programme, *Harnessing diversity in a shared future*, was developed in association with the ten councils that make up the Irish Central Border Area – five North and five South. As with the previous programmes, the modules were delivered through a mix of invited speakers – all with recognised expertise in their field, facilitated working group discussions and wider networking opportunities through additional seminars and workshops. Unlike the previous programmes, this training programme engaged with senior management only from the ten Councils in the region.

The programme has helped local governments in this cross-border region to identify opportunities for potential cooperation in the identified priority areas of shared services; tourism, culture, diaspora and creative industries; and energy and renewables. It provided an intense space (the modules were held at two-week intervals) in which the Councils worked together to research and refine local and regional development issues for the area, as well as activities linked to the ongoing ICBAN-led, INTERREG-funded Spatial Planning Initiative. For example, during 2012, the Councils - with the support of both the ICLRD and ICBAN - fed their conclusions and recommendations into the regional spatial vision plan that was commissioned by ICBAN in late 2011.

Northwest Training Programme: October 2010 – June 2011

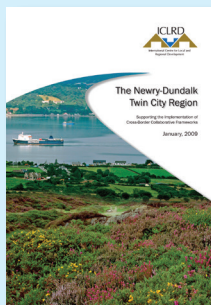
This programme focused on the theme of *Fostering Growth through Cooperation in the Northwest Region*. Donegal County Council, Derry City Council, the ILEX Regeneration Company and representatives



Delegates participating in Module 4 of the CroSPlan II Executive Training and Animation Programme, 7th November 2013 in the Glencarn Hotel, Castleblayney

of the Strabane and Limavady District Councils participated in this programme, which aimed to lead to a deeper understanding of the potential of the North West Region and the role of a cross-border Strategic Partnership Board in furthering strategic cooperation in the linked gateway between Letterkenny and Derry/Londonderry.

The materials introduced through the modules and ideas generated through working group discussions were incorporated into the cross-border activities of the *Donegal County Development Plan*, the NW Partnership Board, and the *One Plan* for Derry/Londonderry. Having won the designation as the U.K.'s first Capital of Culture for 2013, potential thematic areas for cooperation for Derry/Londonderry include tourism, creative industries and cultural programming. Other priority cross-border themes include: enterprise development, vocational training and job creation; and the green economy and sustainable energy. There are also important cross-cutting themes such as greater accessibility to the North West region, transportation and spatial planning.



Newry/Dundalk Twin City Region Training Programme: November 2009 – May 2010
Building on a previous ICLRD initiative, *The Newry-Dundalk Twin City Region: Supporting the Implementation of Cross-Border Collaborative Frameworks* (January

2009), the ICLRD organised a training programme, *Shaping and Managing Cross-Border Development*, for council officials, councillors and private sector representatives from Newry and Mourne District Council, Louth Local Authorities and Down District Council. The training raised awareness of the challenges and opportunities that the region faces, as well as the need for collaborative action, including the creation of stronger links between the communities in the wider Newry-Dundalk Twin-City Region, such as Drogheda and Banbridge.

As a follow-up, the two Councils requested the ICLRD's assistance to develop a cooperation agreement that builds on their existing areas of collaboration, and opens up further opportunities for the sharing of services and joint management of key resources. The ICLRD outlined different types of instruments and institutional structures that could be used to facilitate cross-border cooperation, and worked with the Councils to draft the Memorandum of Understanding that identifies initial areas of cooperation. These included: emergency planning; renewable energy and green technology; tourism and recreation; and sustainable economic growth and job creation. Cooperative structures are also outlined and include: a joint Committee of Elected Members; a joint Senior Management Group; an Advisory Forum; and Project Teams for implementation.

The agreement was approved by the respective Councils in November 2010 and launched in Brussels in March 2011.

COMPLETED RESEARCH REPORTS

Shared Services: Working Together for the Common Good (2013)

This action research report outlines the attributes of shared services and documents current shared service initiatives as it is being pursued across the Republic of Ireland and Northern Ireland. It identifies the common areas where local government in both jurisdictions on the island of Ireland can adapt a shared services agenda, particularly around those functions and responsibilities which can be classified as frontline and/or specialised services and which are citizen-focused. This report further maps the strengths and responsibilities of local government, North and South and includes an overview of the existing functions of local government as well as future functions as a result of the emerging reform agendas in both jurisdictions.





Briefing Report on Shared Services: Propositions for Local Government Collaboration (2012)

This research focuses on the timely issue of shared services and discusses the emerging shared services agenda for both jurisdictions on the island of Ireland. The

briefing paper, a companion paper to international cases on shared services noted below, synthesises the ICLRD's research to date on this topic, as well as presentations by experts on shared services delivered during the ICLRD executive training programmes; there is a particular focus placed on the Irish Border Region. The paper reflects on potential directions and approaches that could be incorporated into current programmes for providing services in a very constrained economic context.



Shared Services Across Local Government – Sharing International Experiences (2012)

This report explores international experiences in shared services and local government reform in four locations: Glasgow and the Clyde Valley in

Scotland; Mancomunidades in the Asturias Region of Spain; New York's Shared Services Programme; and Local Government Restructuring and Realignment in Ontario, Canada. The cases illustrate the rethinking of cooperation in the delivery of public services within geographical areas that may include more than one local authority, and how both structured and voluntary associations can be used to provide a range of services. The cases also highlight the associated challenges of multi-level governance in the provision of services, and the importance of leadership and trust in paving the way for future cooperation. This research will be of interest to senior management in local government and regional authorities, regional development agencies,

cross-border networks and agencies, and national policy-makers.

Towards a Spatial Monitoring Framework for the Island of Ireland: A Scoping Study (2012)

This report focuses on the application of data for the purpose of informing policy decisions, in particular with respect to the policy objectives and strategic

ambitions of the *National Spatial Strategy (NSS)* for Ireland and the *Regional Development Strategy (RDS)* for Northern Ireland. It draws on international experience at the European level and elsewhere in the U.K. The report responds to the need for a joined-up approach to evidence-based planning given the emergence of multiple spatial planning initiatives within the Irish Border Region. International studies and experience indicate the importance of evidence-informed approaches to decision-making, but also the dangers of relying on statistical or quantitative information without taking due account of the underlying processes the data represents. This is often represented as "data rich but insight poor". The study provides a valuable source of expert advice for policy-makers and practitioners at national and regional government levels.



The Elbe River Basin District: Integrated Cross-Border Management in Practice (2012)

This detailed case study focuses on the States of Berlin and Brandenburg in Germany and the Elbe International River Basin District (IRBD). It demonstrates how one catchment area applied both regulatory and non-regulatory measures to integrate water quality improvements with regional land-use plans. This document presents many insights of relevance to International River Basin Districts, and



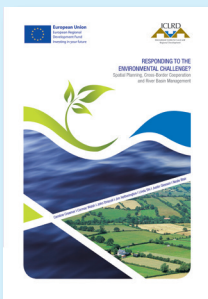
Water Framework Directive implementation on the island of Ireland more broadly.



The Connecticut River Basin: Integrating Water Quality Improvements with Regional Land-Use Plans (2012)

This U.S. case study demonstrates how one watershed applied both regulatory and non-regulatory measures to integrate

water quality improvements with regional land-use plans. It describes how regional partnerships and, in particular collaboration with civic society, is instrumental to managing river basins that span multiple jurisdictions. It notes that while Directives and legislation are important in setting the regulatory parameters, individual river basins need champions to drive regional partnerships that bring together officials, politicians, civil society, recreational users, environmental organisations, land owners and the private sector to improve water quality and enhance opportunities for (re)connecting with the river through recreational uses.



Responding to the Environmental Challenge? Spatial Planning, Cross-Border Cooperation and River Basin Management (2011)

This study examines the key role that spatial planning should play in the implementation of River Basin

Management Plans (RBMP) under the EU Water Framework Directive (WFD). The study takes an all-island and cross-border perspective and draws key insights through ‘good practice’ case studies from Germany and the United States.

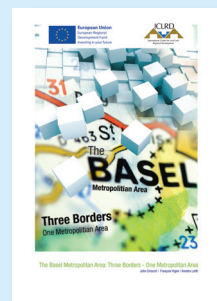
The study sets out strategic options regarding the governance of RBMP and WFD implementation in

both Ireland and Northern Ireland. These options, drawing on research and interviews with key stakeholders, can inform discussions among government departments, environmental agencies and other public sector bodies on both sides of the Irish Border. The case studies pay particular attention to the benefits of joint management of International River Basin Districts. The study raises important questions regarding the role of spatial planning in environmental management and sets out seven key requirements for effective coordination between river basin management and spatial planning. These requirements include recommendations in relation to communication, development of expertise, leadership capacity, allocation of resources and inter-jurisdictional cooperation.

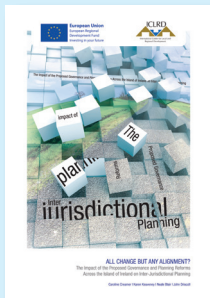
Governance and Planning: An International Perspective (2010)

The ICLRD published a series of international case studies in inter-jurisdictional and cross-boundary governance and planning to complement the recently concluded study *All Change But Any Alignment?* (see below). This research presents examples of innovative practice in collaboration in the following areas:

- *Basel Metropolitan Area* – spanning Germany, France and Switzerland, this case study highlights emerging cross-border cooperation in spatial planning at the sub-regional level;
- *Mancomunidades in Spain* – focuses on provision of services through inter-municipal collaboration at the level of the micro-region; and
- *Boston Metropolitan Area* – provides examples of how to promote regional development through cooperation among local governments, metropolitan planning organisations, the business community and research organisations.



Together, the three case studies provide practical examples of how cooperation in local and regional development can be shaped by collaborative efforts. They highlight how territorial cooperation, particularly in the EU, is moving towards 'placed-based strategies' as promoted in the *EU 2020 Strategy*.

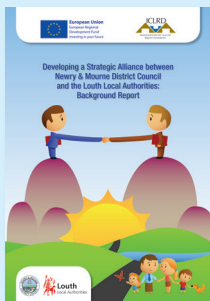


All Change But Any Alignment? The Impact of the Proposed Governance and Planning Reforms Across the Island of Ireland on Inter-Jurisdictional Planning (2010)

Completed in June 2010, this report focuses on inter-jurisdictional planning and

multi-level governance and was published on the ICLRD website. The study considers:

- The various iterations of, and processes involved in, the Review of Public Administration (RPA), specifically as it relates to the reform of local government;
- If and / or how inter-jurisdictional spatial planning policies and operations will be more closely aligned following the various reforms to governance and planning on the island of Ireland; and
- Whether, in the context of the current economic downturn, there is greater political and community support for the alignment of spatial planning policies.



Developing a Strategic Alliance between Newry and Mourne District Council and the Louth Local Authorities: Background Report (2010)

Louth Local Authorities and Newry and Mourne District Council took a major step in the promotion of cross-

border partnership in the Irish Border Region with the signing of a Memorandum of Understanding in

March 2011 to cooperate in a number of thematic areas, including: emergency planning, renewable energy and green technology, tourism and recreation, sustainable economic growth and job creation.

In support of this development, the ICLRD report considers a variety of legal instruments to facilitate cross-border cooperation including: Euro-regions, European Groupings for Territorial Cooperation, European Economic Interest Groupings and ad-hoc agreements. It recommends that the cross-border local authorities adopt a legally non-binding Memorandum of Understanding as the basis for cooperation; the agreement can be expanded to include other regional stakeholders in the future.

Following the signing of the Memorandum of Understanding, a new Louth/Newry and Mourne Joint Council Committee was established to progress joint initiatives, and the two Councils are now sharing council officers and staff in a shared office to implement the MOU.

Delineating Functional Territories Across the Island of Ireland: An Initial Scoping (2010)

Published in October 2010, this report considers the various options for mapping functional territories across the island of Ireland. In undertaking a preliminary

analysis of Functional Urban Areas (FUAs) of the Irish / Northern Irish urban systems, this study includes maps of natural catchments, travel-to-work catchments, origin-destination data, gravity models and urban functional specialisations. The focus of Phase I was to explore the various possibilities of mapping functional territories to produce a set of outputs based on datasets that were available to the research team. The resulting report illustrates the contribution that dynamic spatial analysis of urban functions can make in the profiling of the relational status, performance and potential of urban centres



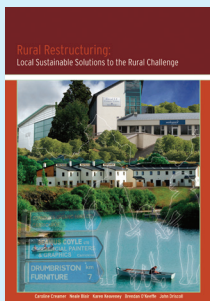
across the island. The research has been carried out by a multi-disciplinary team within ICLRD and funded by the Higher Education Authority (HEA).



Living Together – An Investigation of Case Studies and Strategies for Promoting Safe, Integrated and Sustainable Communities (2009)

This research project investigates initiatives and policies in both Northern Ireland and Ireland to

improve and build subsidised housing in mixed communities through the lens of six case studies, namely Springfarm (Antrim), the Irish Street and Gobnascale interface (Londonderry/Derry) and Carran Crescent (Enniskillen) in Northern Ireland, and Cranmore (Sligo), Mahon (Cork) and Adamstown (Dublin) in Ireland. Together, they provide a cross-section of the challenges faced by communities working to promote or provide mixed housing, the strategies that have helped address these challenges and opportunities to create and maintain housing that is safe, prosperous and open to all. The six case studies were published in association with the Northern Ireland Housing Executive (NIHE) in Belfast and the Housing Agency in Dublin.



Rural Restructuring: Local Sustainable Solutions to the Rural Challenge (2009)

On the 19th June 2009, this report was launched by Minister Michelle Gildernew, Department of Agriculture and Rural Development (DARD) and Andy Pollak, Centre for Cross Border

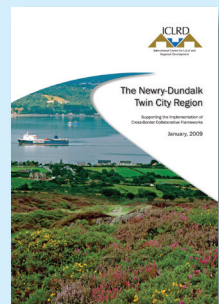
Studies (CCBS). The culmination of a 12-month research project, the research considers the role of rural restructuring and economic diversification, together with the growing importance of the urban-rural interface, in the achievement of balanced

spatial development. The programme of research focused on three rural areas, namely Draperstown, Magherafelt District, Emyvale-Truagh-Aughnacloy on the Monaghan-Tyrone border and Duhallow spanning the Cork-Kerry border.

Both Draperstown and Duhallow have been engaged in the process of rural restructuring for the past 25 years and have built up a wealth of experience over this time. For Emyvale-Truagh-Aughnacloy, the challenges facing this rural community have been further exacerbated by its cross-border location and the impact of decades of back-to-back policy development across both administrations (North and South). Building on over 80 interviews, as well as a wealth of secondary data, the research team also developed a series of working papers on each area and held a one-day conference on the issue of rural restructuring in May 2009 (see p.131).

Newry-Dundalk Twin City Region: Supporting the Implementation of Cross-Border Collaborative Frameworks (2009)

The ICLRD undertook this research initiative in cooperation with Louth County Council, Newry Mourne District Council, Dundalk Town Council and InterTradeIreland. Its objective was to identify (a) potential projects that can bring long-term benefits to the 'Twin-City' Region of Newry-Dundalk and (b) models of cooperation to assist in their implementation.

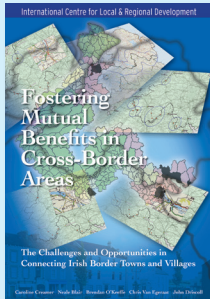


The resulting report was launched on 27th February 2009 by Conor Murphy, MP MLA, Minister for Regional Development in Northern Ireland, and John Gormley, TD, Minister for the Environment, Heritage and Local Government in Ireland, at a special event at the Carrickdale Hotel, Ravensdale, Dundalk, County Louth. The report brings together recent and current research on how to realise the benefits of cross-border collaboration in the Newry-Dundalk Sub

BORDERLANDS

The Journal of Spatial Planning in Ireland

Region through integrated planning and development strategies.



Fostering Mutual Benefits in Cross-Border Areas: The Challenges and Opportunities in Connecting Irish Border Towns and Villages (2008)

This 18-month research programme focussed on the inter-relationships between cross-border towns and

villages in the Irish Border Region. The final report was launched in Blacklion, County Cavan on the 21st November 2008 by renowned journalist and author, Colm Toibin. The research considers the relationship and connectivity that exist between five cross-border settlement groupings and identifies and examines the challenges facing and opportunities within these micro-regions. The Border towns and villages included in the study were:

- Lifford-Strabane
- Kiltyclogher-Cashel/Scribbagh-Garrison-Rossinver
- Blacklion-Belcoo-Glenfarne
- Clones-Rosslea-Newtownbutler-Lisnaskea
- Castleblayney-Crossmaglen.

The key objective of this study was to identify good practices in joined-up planning and regeneration for inter-connected, cross-border areas with a particular emphasis on collaborative efforts that have supported local economic development, social cohesion and mutual benefits. In addition, the study sought to identify factors associated with successful collaboration through review of projects with a history of successful interaction and outcomes, including institutional frameworks for collaboration.

The Atlas of the Island of Ireland – Mapping Social and Economic Change (2008)

On the occasion of the ICLRD's third annual conference on 17th January 2008, the ICLRD and AIRO launched *The Atlas of the Island of Ireland*, a set of detailed full colour maps and cartograms of

varied socio-economic indicators across the island. The Atlas, co-authored by Justin Gleeson, Rob Kitchin, Brendan Bartley, John Driscoll, Ronan Foley, Stewart Fotheringham and Chris Lloyd, was launched by Tommie Gorman, Northern Editor of Radio Telefis Eireann (RTE).



Spatial Strategies on the Island of Ireland: Development of a Framework for Collaborative Action (2006)

This report was prepared by the ICLRD and commissioned by Inter *Tradel*reland on behalf of the Department of the Environment, Heritage and Local Government in Ireland and the Department for Regional Development in Northern Ireland. The report outlines measures to better align spatial planning, infrastructure and cross-border projects to support long-term economic competitiveness, and has been endorsed by the Joint Communique of the British-Irish Intergovernmental Conference. Both Governments became committed to developing a framework for collaborative action between the two existing spatial strategies on the Island.



CONFERENCES

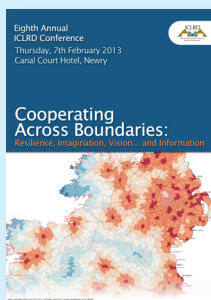
Planning Reform on the Island of Ireland: From Policy to Practice

2 May 2013, Canal Court Hotel, Newry, County Down

In conjunction with Co-operation Ireland, this one-day conference *Planning Reform on the Island of Ireland: From Policy to Practice* considered the significant changes being



made to the planning system in both jurisdictions on the island of Ireland as part of the ongoing local government reform programmes. Held as part of Co-operation Ireland's All-Island Local Authorities Forum, the conference was jointly funded by the Department of Environment, Northern Ireland and Department of Environment, Community and Local Government, Republic of Ireland. Issues addressed by delegates and speakers included: the shaping planning policy and practice in both jurisdictions on the island of Ireland; the role of planning in the promotion of economic development at a local and regional level; the importance of local knowledge and public inputs in informing policy and decision-making; the challenges of infrastructure – development alignment; the (growing) significance of renewable energies in sustainable – and economic – development; and the role of data and an evidence-base in informing policy and decision-making.



**Eighth Annual Conference:
Cooperating Across
Boundaries: Resilience,
Imagination, Vision
and Information**
7th February 2013, Canal
Court Hotel, Newry,
County Down

This one-day event considered what type of cooperative models we should be pursuing in the context of ongoing local government reform across the island of Ireland, continued austerity, the increasing availability of data, and the unceasing need for strategic development. The conference addressed these issues through three themed sessions:

- *New Thinking and Ongoing Challenges in Planning for Places and Communities* – exploring the role of planning and regeneration in creating resilient places and connected communities;
- *The Shared Services Agenda: Cooperating Across Boundaries* – considering how to encourage and support shared opportunities in

- providing services and strategic cooperation; and
- *Open Forum – Advocating Strategic Agendas and Pathways to Decision-Making* – debating the extent to which inter-municipal and cross-jurisdictional cooperation is an important factor in contributing to innovation and sustainable development.

Speakers included Ms. Jenny Pyper, Department for Social Development (Northern Ireland); Prof. Frank Gaffikin, Queens University Belfast; John Fitzgerald, Limerick Regeneration Agencies; Prof. Deborah Peel, University of Ulster; Niall Cussen, Department of Environment, Community and Local Government; Siobhan Coughlan, Local Government Improvement and Development (formerly IDEA); Dr. Brendan O’Keeffe, Mary Immaculate College & University of Limerick; Aidan Gough, InterTradelreland; Prof. Rob Kitchin, NUI Maynooth; Seamus Neely, Donegal County Council; Ciaran Cuffe, Planner, Lecturer and Former Government Minister; and Mary Bunting, Former Northern Joint Secretary, North South Ministerial Council.

**Seventh Annual
Conference:
Planning for a New Future:
Can Planning and Cross-
Border Cooperation Deliver
Change in Ireland and
Europe?**

19-20 January 2012,
Crowne Plaza Hotel,
Dundalk, Co. Louth



Attended by 135 delegates and speakers, the conference was organised as part of our CroSPlan Initiative funded by the Special EU Programmes Body under the INTERREG IVA Programme. The conference was organised around three main sessions:

- *The Collaborative Framework: Cross-Border Regionalism in Action* – the role of new regionalism in enhancing cooperation within functional regions

- *Leadership through Planning: Demonstrating Leadership in Achieving the 'Common Good'* – debating the role of communities, the private sector, and planners in learning from the past and planning a new future.
- *Planning the Future: Rethinking the Role of Planning, Governance and Community* – bringing together delegates and speakers to consider the role and future of planning and local and regional development, and the opportunities and implications of emerging EU agendas on policy and practice.

The island of Ireland and its European neighbours face similar challenges in terms of the global economic downturn, stagnant development and the legacy of over a decade of sometimes ill-planned development. These challenges have knock-on implications for cross-border cooperation, sustainable development and engaging local authorities, businesses and residents in shaping their communities. The Seventh Annual ICLRD Conference considered models of collaboration across borders, and between local government and other key local agencies. Both presenters and delegates alike were asked to identify workable new approaches to planning and the delivery of services.

Speakers and session chairs included: Caroline Creamer and Tim O'Connor, ICLRD; Jenny Pyper, Department for Social Development, Northern Ireland; Justin Gleeson, All-Island Research Observatory (AIRO); Maria-Jose Doval-Tedin, DG Regional Policy, European Commission; Allan Wallis, University of Colorado, Denver; Ciarán M. Tracey, Leitrim County Council; Anne Garvey, Department of Environment, Northern Ireland; John Driscoll, ICLRD; Colin Stutt, Colin Stutt Consulting; Deborah Peel, University of Ulster; Karina Pallagst, University of Technology, Germany; Alice Charles, Alice Charles Planning; Mary Corcoran, NUI Maynooth; Caitriona Mullan, ICLRD Advisory Board; Vincent Goodstadt, Independent Consultant and University of Manchester; and the Honourable Kelley O'Brien, Chicagoland Tri-State Metropolitan OECD Review.

Sixth Annual Conference: The Changing Business, Community and Spatial Planning Landscape: Doing More with Less

20-21 January 2011,
Radisson BLU Hotel,
Ballinacra, Sligo

Attended by 110 people representing central, regional and local government, elected representatives, policy-makers, cross-border networks, community activists, academics and representatives of the business community, this two-day conference was sponsored by the Special EU Programmes Body. The conference was organised around four sessions:

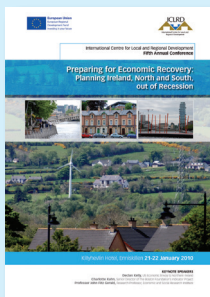
- Planning for Economic Recovery and Sustainable Growth
- Planning for Homes and People: New Challenges, New Agendas
- Planning for Shared Innovation: Infrastructure to Support Innovation-Led Recovery
- A Changing Landscape: Networking, Collaborating and Achieving Greater Efficiencies.

Recognising that the past twelve months had represented a time of significant change for the island of Ireland, the conference focused on the changing budgetary, legislative and policy landscape, and the practical realities of reduced budgets. It debated the need for implementing a period of austerity, and the opportunities this can create for renaissance and resurgence.

Speakers and session chairs included: Nicholas Retsinas, Harvard Business School; Shaun Henry, Special EU Programmes Body; Greg Lloyd, University of Ulster; David Walsh, Department of Environment, Heritage and Local Government; Jenny Pyper, Department for Regional Development; Eddy Curtis, Newry and Mourne District Council; Pádraig Maguire, Border Regional Authority; Brian Rowntree, Northern Ireland Housing Executive; Justin Gleeson, All-Island Research Observatory; Joe Frey, Northern Ireland Housing Executive; Rob Kitchin, National Institute



for Regional and Spatial Analysis; Grainia Long, Chartered Institute of Housing Northern Ireland; Aidan Gough, Inter Tradelreland; Dermot Byrne, Eirgrid; Frank McDonald, *The Irish Times*; Gary McDarby, University College Dublin; Tracy Meharg, Invest Northern Ireland; Feargal McCormack, FPM Accountants; Patricia O'Hara, National Statistics Board; James Cunningham, Centre for Innovation and Structural Change; and Tim O'Connor, former Secretary-General to President McAleese's Office.



**Fifth Annual Conference:
Preparing for Economic
Recovery: Planning Ireland,
North and South, out of
Recession**

21-22 January 2010,
Killyhevlin Hotel, Enniskillen,
Co. Fermanagh

Over 130 people attended this two-day event, which was sponsored by the Special EU Programmes Body under CroSPlaN. Pat Colgan, the Chief Executive of the Special EU Programmes Body, opened the conference; Professor John FitzGerald of the Economic and Social Research Institute gave the opening keynote address; and Declan Kelly, the U.S. Economic Envoy to Northern Ireland gave the closing. The conference was organised around four sessions:

- Health Check on Economic Development, Planning and Infrastructure
- Planning and Economic Recovery – The Social and Community Dimension
- Building the Platform for Economic Recovery
- Recovery through Collaborative Spatial Planning.

The conference addressed questions on how spatial planning can contribute to the process of economic recovery across the island of Ireland in a balanced and sustainable manner. The presentations and discussions over the two days considered: who we should be planning for; how to ensure that the right places receive the right investment and therefore jobs; why we need to ensure that residential

development takes place in places where people will want to live; and the role of infrastructure in improving accessibility and, in the case of broadband, employment opportunities and quality of life.

Keynote speakers from overseas included Charlotte Kahn, Director of the Boston Indicators Project at the Boston Foundation, and Holly St. Clair, Director of Data Services at the Boston-Region Metropolitan Area Planning Council. Other speakers and commentators who provided insights into the role of spatial planning in the process of economic recovery included Pat McArdle, Economist and *Irish Times* correspondent; Conor Skehan, Head Environment and Planning Department, Dublin Institute of Technology; Wesley Shannon, Director Local Government Policy Division, Department of Environment; Hubert Kearns, Manager, Sligo County Council; Patricia Potter, Director of the Dublin Regional Authority; Dr. Celine McHugh, Senior Policy Advisor with Forfás; and Brian Murray, Chief Executive of The Workspace Group.

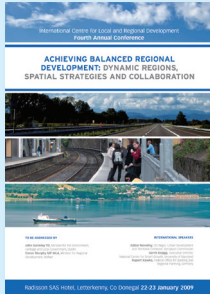
Rural Restructuring: Local Sustainable Solutions to the Rural Challenge

8 May 2009, Blackwater Learning Centre,
Knockconan, Emyvale, Co. Monaghan

A one-day conference on rural restructuring and development organised by the ICLRD, this event was attended by over 110 delegates from community and local development agencies, local government officials, businesses and business networks, practitioners, policy-makers and academics. Speakers of note included Roger Turner of the Commission for Rural Communities; Geoff Brown of the Carnegie UK Trust; Dr. Kevin Heanue of Teagasc; and Maura Walsh of IRD Duhallow. The event, chaired by Michael Kenny of NUI Maynooth, was an opportunity to present emerging findings from the rural study, and participants addressed and debated a wide range of rural development issues.

BORDERLANDS

The Journal of Spatial Planning in Ireland



Fourth Annual Conference: Achieving Balanced Regional Development: Dynamic Regions, Spatial Strategies and Collaboration.

22-23 January 2009,
Radisson Hotel, Letterkenny,
Co. Donegal

The conference focused on issues of strategic territorial planning and balanced regional development. This was achieved through a focus on specific EU territorial policies and a number of the designated gateways on the island of Ireland, including those that cross borders and jurisdictions: namely the Northwest Gateway, the Newry-Dundalk 'Twin-City' Region, the Atlantic Gateway and the Cork Gateway. Furthermore, presentations from the Department for Regional Development, Northern Ireland and the Department of the Environment, Heritage and Local Government, Ireland discussed the opportunities that are emerging for inter-jurisdictional cooperation, and the role of gateways and regions within and between the respective spatial strategies. The conference was attended by over 130 delegates, speakers and chairs from Ireland, Northern Ireland, Wales, Scotland, England, Hungary, Germany, the Skane Region in Sweden, and the States of Massachusetts, Maryland and Virginia in the United States.

Keynote speakers from overseas included Steve Quartermain, Chief Planning Officer in the Department for Communities and Local Government in London; Jim MacKinnon, Director for the Built Environment in the Scottish Government; Grant Duncan, Head of the Sustainable Futures Division in the Welsh Assembly Government; Dr. Gabor Novotny, from the European Commission's DG Regio (Urban Development and Territorial Cohesion); Dr. Rupert Kawka from the German Federal Office for Building and Regional Planning; and Professor Gerrit Knapp, Director, National Center for Smart Growth Research and Education, University of Maryland.

Third Annual Conference: Fostering Cooperation for Local and Regional Development through Cross-Border Spatial Planning

17 January 2008, Armagh
City Hotel



Held in collaboration with Inter *Tradel* Ireland, the ICLRD Third Annual Conference focused on how long-term economic success, coupled with high quality of life on the island of Ireland, can be achieved by harnessing the potential of sustainable communities which transcend the Border. Opened jointly by Batt O'Keeffe TD, Minister for Housing, Urban Renewal and Developing Areas, and Conor Murphy MP MLA, Minister for Regional Development, the conference was attended by 143 delegates representing local and central government, cross-border agencies, the private sector and community organisations.

Among the key issues and research papers presented at the all-day conference were how to implement and finance a collaborative spatial framework, proposals and project areas that can deliver on a cross-border sub-regional strategy for Newry-Dundalk, research and recommendations on how cross-border towns can be reconnected and revitalised; and the role of housing in building sustainable communities.

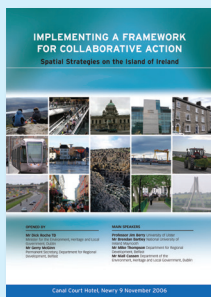
Supporting Evidence-Informed Spatial Planning and Analysis: Towards the Development of All-Island Spatial Databases

15 November 2007, Crowne Plaza Hotel, Dundalk

Organised jointly by the ICLRD, the Regional Studies Association, the National Institute for Regional and Spatial Analysis, the National Centre for Geo-Computation and AIRO, this one-day event was attended by over a 100 delegates. The conference presented the findings of two earlier seminars on the kind of spatial indicators needed to assist in high quality analysis for evidence-based

planning and policy. The seminars were held in the National University of Ireland, Maynooth and the University of Ulster.

Presentations by leading academics and researchers were made on all-island indicators, data applications, maps and key issues around the type, scale and form of potential all-island datasets. Senior policy-makers offered comments on how these initiatives can support both policies and specific projects to foster cross-border cooperation in the areas of spatial planning, service delivery, economic competitiveness and investment strategies.



Second Annual Conference: Implementing a Framework for Collaborative Action: Spatial Strategies on the Island of Ireland

9 November 2006, The Canal Court Hotel, Newry, Co. Down

A key focus of the conference was an examination of (a) the range of regional and local spatial planning initiatives for key development areas identified in the existing spatial strategies and (b) the role of the business community and private sector in inter-jurisdictional development.

The opening speakers were Mr. Dick Roche TD, Irish Minister for the Environment, Heritage and Local Government, and Mr. Gerry McGinn, Permanent Secretary of the Northern Ireland Department for Regional Development. Other speakers included the prominent Dublin architect Mr. Sean O'Laoire, the property developer Mr. Gerard O'Hare, and senior planning officials from both Irish jurisdictions and from the European Commission.

First Annual Conference: Regional and Local Development Strategies on the Island of Ireland – Addressing Key Issues and Building Capacity

27 May 2004, Radisson Hotel, Athlone, Co. Westmeath

This one-day event was opened by the Irish Minister for Education and Science, Mr. Noel Dempsey TD, and was attended by 160 senior figures from central and local government, higher education institutions and the private sector in both jurisdictions. As well as investigating if there was a role for a research centre such as the ICLRD on the island of Ireland, the conference debated whether the many planning and development issues, North and South, were similar in nature. As to the establishment of the ICLRD, there was overall feedback from participants that the Centre should be established.

As well as organising its own conferences, the ICLRD has been invited to present its work at a number of events hosted by other agencies. These have included:

- *Developing a New Way of Thinking about People and Places*, Presentation to Connect 4 Conference, 19 November 2013, Dublin (Caroline Creamer)
- *Potential Roles, Functions and Partnerships for the NWPB*, Presentation to North West Partnership Board, 19 November 2013, Derry (John Driscoll)
- *The ICLRD: Promoting All-Island, Regional, Local and Cross-Border Collaboration in Spatial Planning*, Presentation to the BMW Regional Assembly Board, Ballaghadereen, 21 June 2013 (Caroline Creamer)
- *Cross-border Observation between Northern Ireland and the Republic of Ireland: Building Mutual Understanding*, MOT's First European Seminar on Observation of Cross-Border Territories, City Hall, Nancy, France, 10 December 2012 (Caroline Creamer)
- *Partnership and Local Democracy - Assessing the Role of LEADER in Ireland*, OLA Conference on Local Governance in the U.K. and Ireland, University of Valenciennes, France, 23-24 November 2012 (Brendan O'Keeffe)
- *Data Capture: Information Rich, Insight Poor?*, ICBAN Spatial Planning Conference, Hotel Kilmore, Cavan, 1 December 2011 (Prof. Rob Kitchin and Justin Gleeson)

BORDERLANDS

The Journal of Spatial Planning in Ireland

- *The International Centre for Local and Regional Development: Purpose, Principles and Process*, Presentation on the ICLRD to a South African Delegation from Cacadu Municipality, Armagh City Hotel, 22 November 2011 (Caroline Creamer and Neale Blair)
- *Cross-Border Local Authority Training Across the Island of Ireland*, INICCO International Conference on Cross-Border Training and Impact Assessment, Radisson Blu Hotel, Cavan, 27 October 2011 (Caroline Creamer)
- *Indicator Development and Monitoring for the National Spatial Strategy and Regional Planning Guidelines*, ESPON Ireland Dublin, 28th September 2011 (Jim Hetherington)
- *What is Spatial Planning?* Irish Central Border Area Network Conference on Spatial Planning, Manor House Hotel, Killadeas, 15 September 2011 (Neale Blair)
- *Fixing 'Broken' Government: Functional Territories as an Impetus for Reform*, Regional Studies Association Conference, University of Manchester, 2 November 2010 (Caroline Creamer, Neale Blair and Justin Gleeson)
- *Combating Rural Poverty and Social Exclusion*, Pobal Conference, Drogheda, 21 October 2010 (Karen Keaveney)
- *Community Building through Growing Leadership: the Challenge of the Border*, Presentation to Eisenhower-Loeb Fellows, The Newman Building, Dublin, 5 May 2010 (Caroline Creamer and Karen Keaveney)
- *Inter-Municipal collaboration across Borders: Overcoming Legal and Institutional Differences in the Irish Border Region*, American Association of Geographers Annual (AAG) Conference, 14 April 2010 (John Driscoll)
- *Challenges and Opportunities for Rural Regeneration on the Island of Ireland*, UK-Ireland Planning Research Conference, Anglia Ruskin University, Chelmsford, 7-9 April 2010 (Karen Keaveney)
- *Rural Interfaces: Reconciling Perception with Reality*, Sharing Our Space Event, Killyhevlin Hotel, Enniskillen, 4 March 2010 (Caroline Creamer)
- *Divergence in Policy and Practice: Government and Community Perspectives on Rural Development*, National University of Ireland, Galway, 2 December 2009 (Brendan O'Keeffe and Caroline Creamer)
- *Rural Restructuring: Local Sustainable Solutions to the Rural Challenge*, NSMC Sectoral Meeting on Agriculture and Rural Development, Greenmount College of Agriculture and Horticulture, Antrim, 21 July 2009 (Caroline Creamer, Neale Blair, Karen Keaveney and Brendan O'Keeffe)
- *The Color of Money: The (Changing) Role of Funding in Cross-Border Collaboration*, MOPAN Conference, NUI Maynooth, 18 June 2009 (Caroline Creamer and Neale Blair)
- *Rural Restructuring: an Opportunity within a Challenge*, Conference of Irish Geographers, University College Cork, 16 May 2009 (Caroline Creamer and Brendan O'Keeffe)
- *Understanding and Shaping Regions: Spatial, Social and Economic Futures* Leuven, Belgium in April 2009 (Brendan O'Keeffe)
- *Shaping our Future: Reviewing Northern Ireland's Regional Development Strategy* at the Stormont Hotel in Belfast, 5 November 2008 (Brendan Bartley)
- *Stuck Behind a Tractor! The Celtic Tiger and its Slow Chug towards the Border*, First Irish Social Sciences Platform (ISSP) Conference, Dublin City University, 11 September 2008 (Caroline Creamer and Brendan O'Keeffe)
- *Border Effective: The Economic Competitiveness Challenge Facing Towns and Villages in the Irish Border Region*, ERSA Congress 2008, University of Liverpool, 28 August 2008 (Caroline Creamer)
- *Shared Future – Shaping the Fabric of our Communities*, Cork, 24-25 April 2008 (John Driscoll)
- *Drivers of Connectivity: Understanding the Nature, Challenges and Potentials*, Presentation on ICLRD to Croatian Delegation, Armagh City

- Hotel, 2 April 2008 (Caroline Creamer)
- *Northern Europe, Planning Together for a Sustainable Future* in Inverness, Scotland, 11-15 November 2007 (Brendan Bartley)
- *Cooperation in the Twin-City Region*, Ballymascanlon House, Dundalk, 1 November 2007 Dundalk Chamber's Annual Conference Border Vision Gateway, (John Driscoll)

SEMINARS AND WORKSHOPS

During 2013, the ICLRD continued to hold seminars on topical cross-border issues; with a strong emphasis being placed on evidence-informed policy and planning.

Framework for Co-operation: Spatial Strategies for Northern Ireland and the Republic of Ireland 15 October 2013, Castleblayney

This afternoon event celebrated the long awaited launch of the Framework for Co-operation: Spatial Strategies for Northern Ireland and the Republic of Ireland, a joint publication by the Department for Regional Development (Northern Ireland) and Department of Environment, Community and Local Government (Ireland). This innovative approach to strategic development is the first such spatial planning framework on the island of Ireland, and seeks to influence strategic issues of economic competitiveness, place making, environmental quality, and evidence-based decision making. The Framework, first mooted by the ICLRD in a 2006 study sponsored by InterTradelreland, will be particularly helpful in light of new local government reform policies and the bringing together of local authorities, cross-border bodies and the regional networks in the Irish Border Region who share common challenges and opportunities.

The Framework was launched by Tom Reid of DRD and Niall Cussen of DoECLG as part of Module 3 of the ICLRD's Executive Training and Animation Programme (being delivered as part of the INTERREG-funded CroSPlan II programme).

Shared Services in the Irish Border Region 22 March 2013, Cavan

This afternoon seminar with representatives from local government in the Irish border region considered what is meant by shared services and the range of activities under which a shared services agenda is currently being pursued across the island of Ireland. Drawing on previous research carried out by the ICLRD, the key focus of the event was to debate the potential for local government to be a driver of the shared services agenda, and to consider in what sectors there was the most potential to pursue such a programme.

Informing the Present – Imagining the Future 6 February 2013, Newry

Developed in cooperation with Newry and Mourne District Council and Louth Local Authorities, this technical workshop was held on 6th February 2013 at InterTradelreland. The focus on the workshop was the progress of the Memorandum of Understanding (MOU) between Newry and Mourne and Louth Local Authorities – developed by the Councils with the support of the ICLRD. The workshop included a presentation by AIRO on *Mapping the 2011 Census: What it tells us about the Newry/Mourne-Louth Corridor* and a discussion among key stakeholders in the region on the importance of addressing both economic opportunities and common social and educational challenges.

Local Governance in the UK and Ireland: So Far, So Near.... 23-24 November 2012, Valenciennes

As part of the Europe-wide, OLA (Observatory on Local Autonomy) Network, the ICLRD together with the University of Valenciennes, France organised a two-day European symposium on local and regional governance. This event brought together high-level speakers and delegates from Britain, Ireland, Northern Ireland, France and other parts of Europe – including representatives from ICBAN (Irish Central Border Area Network). The Valenciennes

BORDERLANDS

The Journal of Spatial Planning in Ireland

Conference was the first major OLA event to focus on these islands, and the ICBAN intervention served to document and analyse from a practical perspective the now embedded interfaces between the respective governance and planning systems on the island of Ireland specifically, and the evolving collaborations between the Irish and U.K. systems more generally. Other speakers focusing on Ireland included representatives from the Border Regional Authority, Western Development Commission, Institute of Public Administration, and Seán O'Riordáin and Associates.

OLA is a Europe-wide network, with representatives in thirty countries studying and advocating for local autonomy, decentralisation and better local governance. The ICLRD has been affiliated to OLA since 2009, with Caroline Creamer (NUI Maynooth) and Dr. Brendan O'Keeffe (Mary Immaculate College, University of Limerick) representing Ireland on the Network. Northern Ireland is represented by Prof. Deborah Peel (University of Ulster), who is also a member of the Executive Board of OLA.

River Basin Management Plans: Cross-Border Cooperation and the Role of Spatial Planning

17 October 2012, Monaghan

Building on a series of reports, including documentation of good practices in cross-border river management by the ICLRD in 2011, the Centre and the Border Regional Authority jointly hosted a half-day seminar on river basin management on the island of Ireland. Attendees included senior planners and representatives from local government in the Irish Border Region, the Northern Ireland Environmental Agency and the Department of Environment, Community and Local Government. As well as considering international good practice for cross-border collaboration in river basin management, discussions and debate also centred on the structural changes being undertaken to improve the implementation of River Basin Management Plans in Ireland, and implementation issues and opportunities in Northern Ireland. The importance of small-scale approaches to water resource management was one of the key issues highlighted. Consideration was also given to local



From Left to Right: Mr. Niall Cussen, Department of Environment, Community and Local Government and Mr. Tom Reid, Department for Regional Development officially launch the Framework for Co-operation on 17th October 2013 in the Glencarn Hotel, Castleblayney

perspectives on the challenges and opportunities for river basin management, with an emphasis placed firmly on the need for a robust evidence-base, as well as effective cross-sectoral and inter-jurisdictional communication.

Should Ambulances Stop at the Border? North-South Cooperation in Health

13 June 2012, Dublin

This evening seminar, held in association with the Institute for British-Irish Studies (IBIS), University College Dublin and the Centre for Cross Border Studies, was attended by over 60 healthcare policy-makers, academics and professionals from across the island of Ireland. Chaired by Dr Maurice Hayes, the seminar addressed questions around an all-island strategy on health, and the desirability of deepening cross-border healthcare cooperation to increase access to specialist services and facilities.

The presentations and subsequent discussion noted the good relations that already exist in terms of cross-border collaboration in the coordination and delivery of healthcare services. In this context, the debate focused on local provision of services, the maintenance of services and issues around funding. In addition, the importance of an up-to-date evidence-base for ensuring coherent and equitable provision of services was emphasised.

Models of Cross-Border and Inter-Jurisdictional Cooperation: Learning from the Experiences of Others

19 January 2012, Crowne Plaza Hotel, Dundalk

Organised under the auspices of the CroSPlaN initiative, this half-day technical workshop was attended by over 30 delegates from central government, local authorities and academics interested in the application of models of cooperation to address common opportunities in cross-border cooperation. Three senior practitioners from local agencies and authorities in Massachusetts, Spain and the Irish Border Region presented cases that illustrated how inter-jurisdictional cooperation

agreements can be applied to different issues including: river-basin management in Massachusetts and securing cooperation and consensus across forty-three communities; how bilateral and multi-lateral associations of local authorities in Spain – known as *mancomunidades* – cooperate to deliver services within functional territories; and the Memorandum of Understanding (MOU) between neighbouring councils in the Irish Border Region that commits them to collaborating in areas such as emergency planning, tourism and recreation, and sustainable economic growth.

Planning and Local Government on the Island of Ireland

30 September 2011, Dundalk

Organised in association with Cooperation Ireland and Queen's University Belfast, this well-attended seminar drew over 100 delegates from Ireland and Northern Ireland. The emphasis of this event was threefold: looking at the growing territorial agenda and the opportunities this creates for enhanced cross-border cooperation across the island of Ireland as demonstrated by the experiences of others in Europe; focusing on the potential role of elected members in the planning and governance processes of each jurisdiction on the island of Ireland; and considering the role of planners and councillors in decision-making and the extent to which evidence should lie at the heart of decision-making. Delegates commented on the importance of sharing experiences, which was further noted in the contributions from both jurisdictions regarding the impact of new planning legislation and the reform of public administration in Northern Ireland.

Land Banking and Housing Development: The (New) Role of the Planning System

28 April 2011, NUI Maynooth

A jointly hosted NIRSA-ICLRD-Border Regional Authority event, this one-day roundtable discussion focused on *Land Banking and Housing Development: The (New) Role of the Planning System*. Speakers and contributors considered the state of housing

development and the potential of land banking across the island of Ireland with respect to housing need, unfinished estates, the property market, the planning system and emerging programmes of both the Housing and Sustainable Communities Agency (HSCA) and the National Asset Management Agency (NAMA). It examined international experiences of asset disposal and public land development, and explored possibilities and opportunities in the island of Ireland context. Delegates debated the role of local authorities, HSCA, NAMA, housing associations, private developers and other actors in addressing present issues and creating a more sustainable system of development that serves public and private interests. Attended by over 30 people, this event created a space in which key stakeholder agencies were provided with the opportunity to share and learn from each other.

Developing Core Strategies: Adopting a Bottom-up Approach

9 March 2011, Hodson Bay Hotel, Athlone

Jointly hosted by NIRSA-ICLRD-Border Regional Authority, this one-day event brought together over 120 local authority planners, elected representatives, private sector delegates and policy-makers to exchange experiences and lessons in adopting core strategies as required by new planning legislation in Ireland. The case of how Aberdeen City and Shire produced the Aberdeen Strategic Plan with the support of elected representatives highlighted the key role that elected councillors have in adopting longer-term planning policies. Other key issues considered during the day included data and evidenced-based decision-making, annual monitoring, density and appropriate scale development, and the need for integrated planning policy and practice.

The Functionality of Place: Determining and Mapping Functional Territories

16 June 2010, Armagh City Hotel

Funded by the Higher Education Authority, the ICLRDR hosted a half-day workshop on the topic of functional

territories. This workshop was organised as part of the ICLRDR's ongoing commitment to presenting cutting-edge research into issues of all-island spatial planning and regional development, and AIRO's long-term objective of providing data-users in both policy and practice with an open source 'hub' for spatial data analysis and mapping. Together with ICLRDR colleagues, the 50 participants from central and local government departments and cross-border organisations discussed how the functional territories research can be used by planners and policy-makers in their own work. The workshop also considered the issue of data availability and the need for more accessible and relevant datasets to support evidenced-informed planning and the identification of functional territories that can, for example, lead to maintaining or improving the delivery of services.

Evidence-Informed Planning: Making Information Accessible to Build Inter-Jurisdictional Cooperation

21 January 2010, Killyhevlin Hotel, Enniskillen, Co. Fermanagh

Organised under the auspices of the CroSPiAn initiative, this half-day technical workshop was attended by 40 people from both the public and private sectors with an interest in evidence-based policy and practice. Best practices from Boston were presented to demonstrate how the Boston Foundation and the Metropolitan Area Planning Council use data and outreach events to shape regional change. The presentations from Boston highlighted the role of various technologies (3D visualisations, highly interactive web visualisations and scenario modelling) in helping stakeholders involved in spatial planning processes better understand the impacts and tradeoffs of development decisions. The discussions concluded that a challenge in the Irish context, both North and South, is to make data and evidence on spatial planning available in a format that is accessible to a wide range of users.

An Introduction to Smart Growth

22 January 2009, Radisson Hotel, Letterkenny, Co. Donegal

This half-day event kick-started a debate on the inter-relationship between spatial planning, economic development and the 'common good', both at a regional and local level. Attended by over 30 delegates including central government representatives from the island of Ireland and the U.K., local government officials, academics and community activists, this seminar considered the experience of 'Smart Growth' in the State of Maryland and catalytic urban development initiatives from Virginia – and the relevance of these initiatives to the Irish context. The programmes from Maryland and Virginia were presented by Prof. Gerrit-Jan Knapp, Executive Director, National Center for Smart Growth Research and Education; and Prof. Judith Meaney, Adjunct Professor and Director Real Estate Development Concentration, The Catholic University of America, Washington.

Supporting Evidence-Based Spatial Planning and Analysis in Ireland: Towards the Development of All-Island Spatial Databases

15 February 2007 in NUI Maynooth; and 20 June 2007 in University of Ulster

The Regional Studies Association (RSA) together with the National Institute for Regional and Spatial Analysis, the National Centre for Geocomputation, and the ICLRD hosted two workshops during 2007 on the importance of all-island datasets on key thematic issues in spatial development. The workshops addressed a number of key issues, namely:

- Identifying existing common datasets for the island of Ireland;
- Building on what already exists and considering the type, scale and form of future key all-island datasets; and
- Agreeing on a list of indicators to assist in good quality analysis of evidence-based planning and policy, and the roll-out of a planning research programme.

These workshops were open to those with an interest in spatial analysis and planning data, in particular policy-makers, representatives from regional and local government, state agencies, planning consultancies, and academics.

Exploring the Economic and Social Implications of the National Spatial Strategy

15 April 2005, Athlone, Co. Westmeath

The seminar was organised jointly by the Athlone Institute of Technology and the National University of Ireland, Maynooth. The objective of this event was to present and discuss spatial strategies from European, national, regional and local perspectives; with particular reference to economic and social aspects.

OUTREACH

Armagh-Monaghan Enabling Agreement (2013)

The cross-border councils of Monaghan County Council and Armagh City and District Council have expressed an interest in developing an enabling agreement, such as a Memorandum of Understanding (MOU), to strengthen cooperation between these two councils. During Spring 2013, a number of meetings were held between the ICLRD, East Border Region (EBR) and officials and councillors from both local governments to explore both the interest and possible forms of future cooperation.

The International Centre for Local and Regional Development (ICLRD) have been invited to be part of this process given their experiences in cross-border cooperation among local governments, as well as their knowledge of agreements that can be used to strengthen and guide this cooperation - as highlighted by the key role they played in the development of an MOU between Newry and Mourne District Council and Louth local authorities in 2011.

Following these meetings, and a subsequent proposal submitted to both EBR and the councils for their consideration, the ICLRD have been contracted

to work with the councils to jointly develop a suitable enabling agreement. Work will commence on this programme in early 2014.

Irish Central Border Region (2012/2013)

The ICLRD has been closely involved in providing guidance to the Irish Central Border Area Network's (ICBAN's) cross-border spatial planning activities. The Irish Central Border Region Spatial Planning Initiative, which has been partly financed by the EU's INTERREG IVA Programme and is worth over £1.5 million, is a drive by ICBAN to give the region distinctiveness, translating key national plans into local and regional actions. Through a suite of projects, the Spatial Planning Initiative is developing the necessary skills and capacity of its constituent Councils to enable them to engage positively and progressively with central government, North and South. The ICLRD provided technical assistance during the setup period on how the work programme should be shaped and managed to achieve the aims and objectives of the Initiative; while also promoting collaborative activity and skill transfer amongst council and community groupings. The ICLRD has been an active member of the project's Spatial Planning Action Steering Group and, in late 2012, the ICLRD was commissioned by ICBAN to continue in its role as an external advisor to support the programme.

The ICLRD, ably represented by Jim Hetherington, has played a key advisory role in both the data capture project and the publication of the Regional Strategic Framework 2013-2027 (RSF). Since the launch of the RSF in November 2013 in the Slieve Russell Hotel, Ballyconnell, Co. Cavan, Mr. Hetherington has been advising and supporting ICBAN in the dissemination of the key messages in this Framework, including at events held in Stormont and Dail Eireann. This support role continues until March 2015.

North West Gateway Initiative (2012/2013)

Following the ICLRD 2011 training programme in the North West, the Centre has continued to provide

assistance to the local councils and the North West Partnership Board (NWPB) to consolidate initiatives supporting strategic cooperation in the North West Gateway. Activities to date have included undertaking reviews of local policy documents to identify common areas and strategic projects/initiatives for future cooperation; supporting the NWPB in not only presenting on the potential of enhanced collaboration in the North west but also in making submissions around the renewed interest in the North West gateway Initiative by both governments; and engaging with key stakeholders and central government departments in both jurisdictions on the potential of the NWPB developing an Action Plan to strengthen the linkages between the North West Gateway Initiative, and the priorities and programmes for local, regional and national government.

To this end, the ICLRD with the support of aforementioned the key stakeholders in the region were successful in their funding application to the Department of Foreign Affairs and Trade 'Reconciliation Fund' in May 2013. This 12 month funding supports the ICLRD and the Partnership Board in developing an plan for the Board over the short- to medium-term which supports the strengthening of the capability of local stakeholders to become advocates for strategic joint action for the North West. a key emphasis of the work programme is to identify locally-defined, cross-border programmes and projects that are viewed as being central to the development and growth of the North West.

In addition, the ICLRD's sister organisation, AIRO, continues to provides advice regarding evidence-based planning and sits on the steering committee for the Northwest Region Cross-Border Group SPACEial data capture project.

Truagh-Aughnacloy Community Planning (2011/2012)

Since May 2010, the ICLRD has been providing technical assistance to a number of community development associations along the North Monaghan

/ South Tyrone border. The development associations from Truagh, Aghnacloy, Aghaloo, the Bawn, Loughans, Clara and Carrickroe are working together on a community business and social economy plan. This is the first time that these neighbouring associations have formally worked together.

The groups have been working with a consultant on social enterprise development. Initial activities included a household perceptions study of 150 households, a survey of 63 businesses, community-based meetings with civil society and public sector bodies on both sides of the Border and focus groups with younger and older residents. Taking a longer-term perspective, the consultation process has led to the development of a North Monaghan Development Framework study based on a vision of the sub-region as an economically sustainable and outward looking Border catchment area where people and communities are empowered to achieve their best.

The next phase of the groups' work will examine the feasibility of:

- A Blackwater Valley branded Business Development and Marketing Initiative;
- An Independent Living Project providing support services to lone dwellers and older people, in addition to community-based employment opportunities, especially for women; and
- The Implementation of a Youth Employment, Entrepreneurship and Leadership Programme.

In order to consult with residents on both sides of the Border and to gain insights into the types of social economy and community development activities that would be favoured locally, young people from Truagh and the surrounding communities came together in 2012 and undertook a household survey. The ICLR D provided technical support to enable them to formulate a survey questionnaire, and to process the results. The response rate throughout the area was very positive and a wealth of suggestions were advanced, which now need to be progressed. In the meantime, the youth have assumed leadership roles within their own communities, and are bringing a

fresh vitality and energy to local development and cross-border cooperation.

Harvard Joint Centre for Housing (2009)

Within the housing sector on the island of Ireland, there is currently no systematic process or structure for examining and understanding the inter-jurisdictional implications of housing policies and markets. To explore potential means of building cooperation around housing indicators, the ICLR D facilitated academic exchanges for Justin Gleeson, Manager of AIRO, and Karen Keaveney, Lecturer at Queens University Belfast to the Harvard Joint Center for Housing and the Institute for International Urban Development in Cambridge, Massachusetts. Their meetings and research in Boston, and subsequent meetings with senior officials in the Northern Ireland Housing Executive and the Department of Environment, Heritage and Local Government in Dublin, has led to increased cooperation on the identification of common data which can be incorporated into an accessible web-based data base available on the AIRO website. The ICLR D is also exploring the potential demand and interest for an annual report on key housing trends, issues and markets for the island of Ireland.

Reconstruction and Resettlement Council, Cyprus (2008)

In October 2008, John Driscoll joined a delegation from the island of Ireland that presented at a conference on 'Integrating Transport in a Reunified Cyprus' in Nicosia, Cyprus, the 'last divided capital in Europe'. The conference was organised by the Reconstruction and Resettlement Council (RRC) of Cyprus and Kate Burns (formerly of ICBAN) who was working with the RRC at the time on the lessons that could be learned from cross-border development on the island of Ireland to promote peace and reconciliation in Cyprus between the Turkish and Greek Cypriot communities. This event was the beginning of an ongoing discussion between the ICLR D and RRC. In July 2009, for example, a two-person delegation from the RRC met with John and Andy Pollak to discuss if there are potential

areas where ICLRD and the Centre for Cross Border Studies could assist the Council in Cyprus.

BRIEFING PAPER SERIES

In November 2009, the ICLRD launched its Briefing Paper Series. This involves the publication of short, timely articles that explore how various forms of planning, enacted at different spatial scales, can contribute to better collaboration on the pressing issues facing both Ireland and Northern Ireland. By considering both jurisdictions on the island and the potential synergies and efficiencies that can be realised through cooperation, the series aims to provide a more rounded view than considering each jurisdiction in isolation. Articles available to date include:

- *Small Island: Big Marine Challenges Ahead for the Blue Economy* by Dr. Heather Ritchie, University of Ulster (December 2013).
- *Implementation of River Basin Management Plans: Current Issues and Future Needs* by Dr. Ainhoa González Del Campo, Researcher, NIRSA, NUI Maynooth, John Driscoll, Director, International Centre for Local and Regional Development, and Pádraig Maguire, Regional Planner, Border Regional Authority (December 2012).
- *Biomass Resources in the Island of Ireland* by Michael Doran, Executive Director of Action Renewables (September 2012);
- *Reflections on the Boom: A Time for Reform* by Dr. Patricia O'Hara, Chairperson of the National Statistics Board and Adjunct Professor at the National Institute for Regional and Spatial Analysis (NIRSA), NUI Maynooth (August 2011);
- *Innovation: The Challenge of Building an Adaptive and Innovative Society* by Dr. James Cunningham, Director of the Centre for Innovation and Structural Change (CISC) and Senior Lecturer at the J.E. Cairnes School of Business & Economics, NUI Galway (May 2011);
- *Doing More with Less: A Business Perspective* by Fergal McCormack, FPM Chartered Accountants (January 2011);
- *Recovery Scenarios for the Two Irish Economies* by Prof. John FitzGerald, The Economic and Social Research Institute (July 2010);
- *Evidence-Informed Spatial Planning: A Metro Boston Perspective* by Holly St Clair, Metropolitan Area Planning Council (MAPC), Boston (May 2010);
- *ESPON – A New Practical European Research Agenda for Territorial Development* by Cliff Hague, ESPON Contact Point UK and Brendan Bartley, ESPON Contact Point Republic of Ireland (Feb. 2010);
- *The Conditions Necessary for Gateway Development and The Role of Smaller Gateways in Economic Development* by Prof. Jim Walsh, NUI Maynooth and Cormac Walsh, Urban Institute, University College Dublin (Jan, 2010);
- *Linking Spatial Planning with Public Investment: Perspectives from the Island of Ireland* by David Counsell, Planner & Prof. Greg Lloyd, University of Ulster (Dec. 2009);
- *Good Planning Key to Future Success* by Prof. Rob Kitchin, NUI Maynooth & Prof. Alastair Adair, University of Ulster (Nov. 2009).

Further articles will be added on a regular basis.