

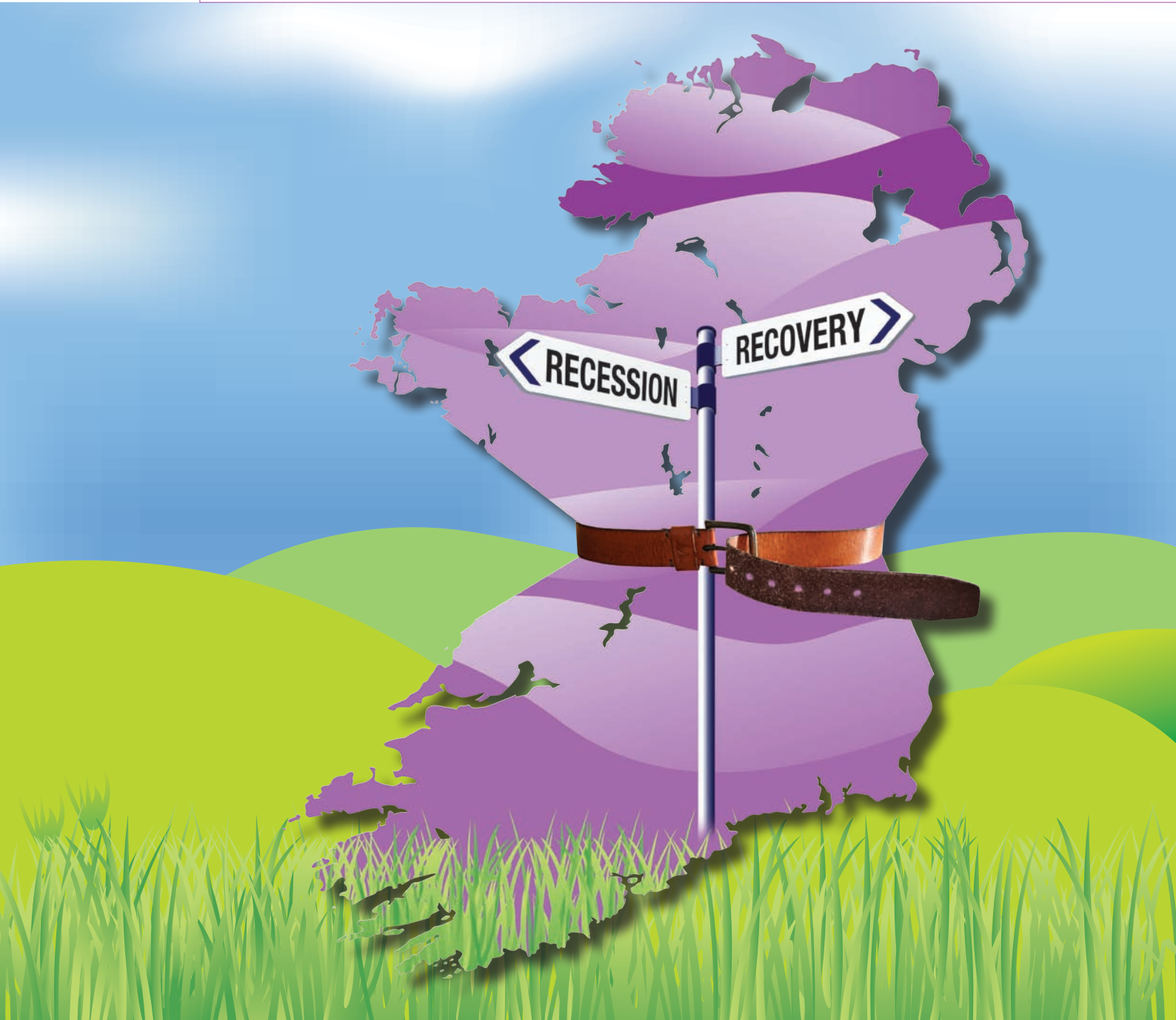


**European Union**  
European Regional  
Development Fund  
Investing in your future



Sixth Annual Conference

# The Changing Business, Community and Spatial Planning Landscape: Doing More with Less



Radisson BLU Hotel & Spa, Ballinacra, Sligo 20-21 January 2011



## The Changing Business, Community and Spatial Planning Landscape: Doing More with Less

### PROGRAMME

#### Thursday 20th January 2011 (afternoon)

1.00	Registration & Tea/Coffee	5.10
1.45	<b>Welcome</b> Mr. John Driscoll, Director & Mr. Feargal McCormack, Chairman, ICLRD	
2.00	<b>The Challenges of Cross-Border Cooperation in a Changing Economic Landscape</b> Mr. Shaun Henry, Director, Managing Authority, Special EU Programmes Body	

#### Session 1: Planning for Economic Recovery and Sustainable Growth

*Considering how, in the context of severe budget cutbacks and legislative and policy changes (both proposed and on-going), the landscape for spatial planning and economic development in both jurisdictions – Northern Ireland and the Republic of Ireland – is changing.*

2.15	<b>Welcome by Chair</b> Prof. Greg Lloyd, Head of School of the Built Environment, University of Ulster	5.40
2.25	<b>Spatial Planning for New Realities: Economic Recovery &amp; Sustainable Growth</b> Ms. Jenny Pyper, Director, Regional Planning and Transportation Division, Department for Regional Development (DRD) & Mr. David Walsh, Principal Officer, Department of Environment, Heritage and Local Government (DoEHLG)	5.55
2.50	<b>Adjusting to Reduced Budgets: The Practical Realities of Doing More with Less</b> <ul style="list-style-type: none"> <li><b>A Local Government Perspective:</b> Mr. Eddy Curtis, Director of Administration, Newry &amp; Mourne District Council</li> <li><b>A Planning Perspective:</b> Mr. Pádraig Maguire, RPG Implementation Officer, Border Regional Authority</li> </ul>	6.15
3.20	<b>Panel Discussion / Q&amp;A</b>	7.45
3.40	<b>Refreshments</b>	

#### Session 2: Planning for Homes and People: New Challenges, New Agendas

*Exploring the unprecedented short- and long-term challenges and impact on local and regional planning, as well as the sustainable communities agenda, of the proliferation of land banks and oversupply of housing across the island of Ireland and the border region.*

4.00	<b>Welcome by Chair</b> Mr. Brian Rowntree, Chairman, Northern Ireland Housing Executive (NIHE)	10.45
4.10	<b>Social Implications and Opportunities of NAMA: One Year On</b> <ul style="list-style-type: none"> <li>Mr. Justin Gleeson, Project Manager, All-Island Research Observatory (AIRO)</li> <li>Prof. Rob Kitchin, Director, National Institute for Regional and Spatial Analysis (NIRSA), NUI Maynooth</li> </ul>	11.05

- Mr. Joe Frey, Head of Research, Northern Ireland Housing Executive (NIHE)
- Ms. Grainia Long, Director, Chartered Institute of Housing Northern Ireland

#### Our Communities, Our Homes: The U.S. Perspective

Mr. Nicolas P. Retsinas, Senior Lecturer in Real Estate, Harvard Business School, Director Emeritus of Harvard University's Joint Center for Housing Studies & Former Assistant Secretary for Housing-Federal Housing Commissioner at the United States Department of Housing and Urban Development (HUD)

#### Keynote Address: Changing Planning Policy and Practice in Response to the Emerging Economic Depression

Mr. Michael Finneran T.D., Minister of State with special responsibility for Housing and Local Services

#### Panel Discussion / Q&A

#### Close Day 1

#### Reception & Launch of ICLRD Journal of Spatial Planning

Launch by Ms. Anne Barrington, Southern Joint Secretary, North South Ministerial Council & Ms. Mary Bunting, Northern Joint Secretary, North South Ministerial Council

#### Followed by Conference Dinner

#### Friday 21st January 2011 (morning)

9.00	Registration & Tea/Coffee
9.30	<b>Welcome: Day 2</b>

#### Session 3: Planning for Shared Innovation – Infrastructure to Support Innovation-Led Recovery

*Discussing the critical role of innovation in securing economic recovery and the role for cross-border networking, collaboration and infrastructure in aligning the necessary building blocks required to drive the process and bring about the required linkages.*

9.30	<b>Welcome by Chair</b> Mr. Aidan Gough, Strategy & Policy Director, InterTradelreland	
9.45	<b>Innovation in Supporting the (Re)building and Recovery of the Island of Ireland</b> <ul style="list-style-type: none"> <li><b>Transforming the Power System on the Island of Ireland to Facilitate Recovery:</b> Mr. Dermot Byrne, Chief Executive, Eirgrid</li> <li><b>Unique Perspectives on Innovation and Technology – the Human Dimension:</b> Dr. Gary McDarby, University College Dublin</li> <li><b>Investing in Innovation:</b> Ms. Tracy Meharg, Managing Director, Innovation and Capability Development Group, Invest NI</li> </ul>	
	<b>Panel Discussions / Q&amp;A</b>	
	<b>Towards a Framework for Understanding Shared Services in Modern Governance</b>	



**The Changing Business, Community and Spatial Planning Landscape: Doing More with Less**

11.20 Prof. Greg Lloyd, Head of School of the Built Environment, University of Ulster  
**Refreshments**

**Session 4: A Changing Landscape – Networking, Collaborating and Achieving Greater Efficiencies**

*Debating the key messages emerging from this two-day event in terms of what ideas can be harnessed, what should be the focus of future action, and what role does networking and collaboration play in bringing these opportunities to fruition.*

11.40 **Welcome by Chair**  
 Mr. Frank McDonald, Environment Editor, *The Irish Times*

- 11.55 **'Doing More with Less': The Big Ideas Emerging from this Conference**
- **A Planning Perspective:** Mr. Brendan Bartley, Former Deputy Director, National Institute for Regional and Spatial Analysis, NUI Maynooth
  - **An Economic Perspective:** Dr. James Cunningham, Director, Centre for Innovation and Structural Change (CISC), NUI Galway
  - **A Social Perspective:** Dr. Patricia O'Hara, Chairperson, National Statistics Board and former Policy Manager, Western Development Commission
  - **A Business Perspective:** Mr. Feargal McCormack, Managing Partner, FPM Accountants and Chairman of ICLRD

12.20 **Cross-Border Working: Creating a Network for Information, Advice and Action**  
 Open Debate facilitated by Mr. Frank McDonald

1.00 **Closing Comments**  
 Dr. Tim O'Connor, Business Consultant and former Secretary-General to President McAleese's Office and former Southern Joint Secretary of the North South Ministerial Council

1.15 **End Conference / Buffet Lunch**

**CONFERENCE SPEAKERS AND CHAIRPERSONS**



**John Driscoll** is the Director of the International Centre for Local and Regional Development (ICLRD), a North-South-US partnership between universities and research centres. Based in Armagh, the ICLRd engages in applied research in spatial planning and related subjects. John is also Vice-President of the

Institute for International Urban Development in Cambridge, Massachusetts, where he is engaged in research, teaching and consultancy activities that focus on regional and city development strategies. From 1989 to 2005, he was a senior research associate and lecturer in Urban Planning at the Center for Urban Development Studies, at the Harvard Graduate School of Design. He is currently a research fellow at the Joint Center for Housing Studies at Harvard University.



**Feargal McCormack** is the founder and Managing Partner of FPM Chartered Accountants, an award winning pro-active all-island accountancy and business advice practice, with offices in Newry, Dundalk, Belfast and Dungannon. Feargal is currently Chairman of the International Centre for Local and Regional Development (ICLRD), a Patron of Special Olympics Ireland, a

Director of the Centre for Competitiveness and a member of the Southern Regional Board of the Princes Trust. He is a former Chairman of the Ulster Society of Chartered Accountants and the ICAI Strategic Development Committee. He is also a former Non-Executive Director of InterTradeIreland and a former member of the seven-person Independent Review Panel on the location of Public Sector Jobs in Northern Ireland.



**Shaun Henry** is Director of the Managing Authority within the Special EU Programmes Body (SEUPB). Shaun has been working with the SEUPB since 2002. During the programme period 2000-2006, he was the Director of the Peace and Reconciliation Programme (PEACE II) and the INTERREG IIIA Programme. Shaun was seconded to

the Ministry for Regional Development in Romania for the period 2007-2009, to advise on the implementation of EU structural funds. Following his return to Belfast in 2009, Shaun has been appointed as the Director of the Managing Authority for the PEACE III and INTERREG IVA Programmes. Prior to his employment with the Special EU Programmes Body, Shaun worked in the Rural Development Council, Northern Ireland and before that he had the experience of working in East Africa - two years with Ireland Aid under the Department of Foreign Affairs and five years with Concern Worldwide. Shaun has a Degree in Agriculture, a Masters in Forestry and an MBA.



**Professor Greg Lloyd** is Professor of Urban Planning and Head of the School of the Built Environment at the University of Ulster. Prior to this, he was Professor of Planning in the Department of Civic Design at the University of Liverpool (2006-2008) and Professor and Head of the School of Town and Country Planning at the

University of Dundee (1994-2006). He is an Academician of the Academy of Social Sciences. He was Ministerial Adviser to the Northern Ireland Assembly Government on its reform of land use planning (2008-2010) and was a member of the Best Commission on the future of housing in Northern Ireland which published its report in May 2010. He was recently awarded a Distinguished Professional Membership of the Chartered Institute of Housing. He is a Patron of Planning Aid Scotland.

**Jenny Pyper** is Director of Regional Planning and Transportation Division, Department for Regional Development (DRD), Northern Ireland. Jenny was appointed as Director of Regional Planning in June 2010. Her role is to develop and implement both a revised *Regional Development Strategy*





## The Changing Business, Community and Spatial Planning Landscape: Doing More with Less



and *Regional Transportation Strategy* for Northern Ireland. She also has responsibility for implementing the *Accessible Transport Strategy* and the Executive's policy on Rathlin. Prior to this, Jenny was Director of Energy Policy in the Department of Enterprise, Trade and Investment.



**Dave Walsh** is Head of the Planning System and Spatial Policy Section in the Irish Department of Environment, Heritage and Local Government (DoEHLG). He oversees implementation of the 2002 *National Spatial Strategy* (NSS), the 20-year planning framework for spatial development in the Republic of Ireland to achieve a better

balance of social, economic and physical development across the country. The Section develops and implements policies relating to forward planning and development management systems; in shaping clearly focused development planning at city, county and local level; and in preparing statutory and best practice planning guidance on a range of issues. To this end, the Section works closely with both regional and local authorities. There is also close collaboration with Northern Ireland's Department for Regional Development (DRD) in facilitating cross-border strategic thinking on planning issues, and in supporting ongoing research and initiatives.



**Eddy Curtis** is Director of Administration for Newry and Mourne District Council. Formerly a teacher in the Lagan College, Northern Ireland's first Integrated College, he moved to Newry and Mourne District Council in 1984 and, to date, has held a number of posts in Community Services, Leisure Services and Economic

Development. In his current post, Eddy is responsible for general administration, Legal Services, Property Services, the District Policing Partnership, Community Safety, Equality, Member Services, Public Relations, Human Resources, Peace III and Estate Management. As part of his current post, he facilitates the Newry and Mourne Health Services Working Group, a multi-disciplinary team comprising of health workers, trade unions, and others; and is also a member of the Newry and Mourne Well Being Action Partnership. He was also Chairperson of the Review of Public Administration Human Resources Working Group. In a private capacity, he was the Chairman of the Newry and Mourne Leader Company, Secretary of the Newry City Centre Management Company, a member of the East Border Region Committee, and a Trustee of the Murphy's Trust.

**Pádraig Maguire** is the Regional Planning Guidelines (RPGs) Implementation Officer with the Border Regional Authority. He began his career in 1998 with the Environment and Heritage Service as a Scientific Officer, developing conservation and management plans for Areas of Special Scientific Interest (ASSIs) throughout Northern Ireland. Pádraig subsequently joined Planning Service Northern Ireland in 2000, working in development management in the Omagh and Enniskillen planning offices. Whilst working with Planning Service, he



also studied at Queens University Belfast where he attained an MSc in Environmental Planning. Following this, he joined Monaghan County Council as an Executive Planning Officer in 2005 and worked as a key member of the Forward Planning Team up until his secondment to the Border Regional Authority in 2008. Since joining the Regional Authority in 2008, he has project managed the review of the RPGs in the Border Region – and these were adopted in September 2010. Padraig currently participates in numerous cross border spatial planning projects and is a member of the ICLRD Advisory Board.



**Brian Rowntree** was appointed Chairman of the Northern Ireland Housing Executive, with effect from 5 May 2004. Brian has previously held a number of Public Appointments at Chair and Non-Executive Director level in Criminal Justice, Health and Further Education, and has chaired and participated in a wide variety

of forums in Northern Ireland and on a cross-border basis. He is immediate past Vice-President of Cecodhas – the European Social Housing Forum. Brian is a Non-Executive Board Member of Co-Operation Ireland, an Advisory Board Member of the International Centre for Local and Regional Development (ICLRD), a UK Council Member of the Energy Efficiency Partnership for Homes, and Chair of the Sustainable Smart Home Working Group. In 2010, Brian was appointed as a Northern Ireland Advisory Board Member of the National Assets Management Agency (NAMA). Brian has an executive background in taxation, finance, management development and strategic planning, and has considerable personal experience in capital projects within the construction sector. In June 2004, he was awarded the CBE for services to criminal justice, and was awarded Honorary Membership of the Chartered Institute of Housing in 2008.



**Justin Gleeson** is currently the Project Manager of the All-Island Research Observatory (AIRO) based in the National University of Ireland, Maynooth. He is also the Technical Manager of spatial projects at the National Institute for Regional and Spatial Analysis (NIRSA) and is involved in a number of ICLR and ESPON projects.

Justin's main research areas are in demographics, social inclusion, mapping and spatial analysis, and improving public data usage and dissemination. Justin has a BA and MA in Economic Geography from the National University of Ireland, Galway and an MSc in GIS from the University of Leeds; and has over 8 years experience working within the commercial and research GIS industry in Ireland and the UK.

**Professor Rob Kitchin** is Director of the National Institute for Regional and Spatial Analysis (NIRSA) at the National University of Ireland, Maynooth. He is also Chair of the Management Board of the Irish Social Sciences Platform (ISSP) that brings together academics from 19 disciplines in nine institutions into shared research and graduate education programmes.



## The Changing Business, Community and Spatial Planning Landscape: Doing More with Less



Rob has undertaken a range of research for government departments, semi-state agencies, local authorities and community and voluntary groups. To date he has published 18 books, edited the 12 volume *International Encyclopedia of Human Geography*, and written over 100 articles and book chapters. He is an editor of the international journal, *Progress in Human Geography*. He is a contributor to the blog, Ireland After NAMA.



**Joe Frey** was awarded an MSc in Town and Country Planning from Queen's University Belfast before joining the Northern Ireland Housing Executive in 1982. He gained his professional housing qualification from the Institute of Housing in 1987. Following a series of appointments in Housing Management and then as Project Leader in IT, Joe managed the Housing Executive's Strategic Planning Unit for three years until his appointment as Head of Research in 1998. He is also a lecturer in housing at the University of Ulster.



**Grainia Long** is Director of the Chartered Institute of Housing in Northern Ireland, and was Principal Adviser to the Commission on the Future for Housing in Northern Ireland. She previously held the post of Director of Policy at the Equality Commission for Northern Ireland, and before that worked in Scotland for the housing and homelessness charity, Shelter. She is a member of the Institute of Directors, and a Fellow of the Royal Society for the Encouragement of Arts, Manufactures and Commerce.



**Nicolas P. Retsinas** is a Senior Lecturer in Real Estate at the Harvard Business School where he teaches courses in housing finance and real estate in emerging markets. He is also Director Emeritus of Harvard University's Joint Center for Housing Studies, a collaborative venture of the Graduate School of Design and the Harvard Kennedy School. Prior to his Harvard appointment, he served as Assistant Secretary for Housing-Federal Housing Commissioner at the United States Department of Housing and Urban Development and as Director of the Office of Thrift Supervision.



**Minister Michael Finneran** is Minister of State for Housing and Local Services at the Department of Environment, Heritage and Local Government (DoEHLG) and T.D. for Roscommon-South Leitrim. Minister Finneran is former Chairman of the Joint Oireachtas Committee on Finance and Public Service, and a former member of the Joint Oireachtas Committee on Social and Family Affairs. Prior to being elected to the Dáil in 2002, Michael was a member of Seanad Éireann from 1989 to 2002, and a member of Roscommon County Council from 1979-2002. He was

appointed Minister of State at the Department of Environment, Heritage and Local Government with special delegated responsibility for Housing, Urban Renewal and Developing Areas in May 2008 by An Taoiseach Brian Cowen, T.D. The responsibility for Local Services was added to the Minister's brief in 2009 and his title changed accordingly.



**Anne Barrington** was appointed Joint Secretary (South) of the North South Ministerial Council in August 2010. From 2007 to 2010, she was Ireland's Ambassador to Tanzania (and also Kenya and Burundi). Prior to this, Anne was Director of the National Forum in Europe based in Dublin. Anne has also worked in the Department of Taoiseach, and has served abroad in New York and Washington.



**Mary Bunting** is a Deputy Secretary in the Office of the First Minister and Deputy First Minister (OFMDFM). She has been Joint Secretary (North) of the North South Ministerial Council since October 2005. Prior to this, she was Director of Equality in OFMDFM.



**Aidan Gough** is Strategy and Policy Director for InterTradeIreland. In this role he advises on collaborative strategy, policy and initiatives to help InterTradeIreland in boosting North/South economic co-operation to the mutual benefit of both economies on the island. He leads InterTradeIreland's policy and research team to identify areas where joint Government intervention can help to create an environment where it is easier to do business, and increase the competitiveness of individual businesses – and the island as a whole – in the global economy. Aidan is a graduate of Queen's University Belfast with an MBA and MSc in Economics. Prior to joining InterTradeIreland in 2000, Aidan was Director of the Northern Ireland Economic Council.



**Dermot Byrne** was appointed Chief Executive of EirGrid in July 2005. Dermot has extensive senior management experience in the electricity industry in Ireland and abroad. From 1993 to 1997 he was Manager, Power System Operation in ESB National Grid. In the late 1990s, he worked in senior roles within ESB customer services and power generation areas. In 2000, he was appointed as the first Head of ESB Networks, where he oversaw the major ramp-up in investment in transmission and distribution infrastructure. In his role as Chief Executive of EirGrid, Dermot has developed EirGrid into a group structure with responsibilities in Northern Ireland and the Republic of Ireland, comprising EirGrid TSO, System Operator Northern Ireland (SONI), and the Single Electricity Market Operator (SEMO). He is a Fellow of Engineers Ireland and he is also a distinguished member of the international electricity body CIGRE.





## The Changing Business, Community and Spatial Planning Landscape: Doing More with Less



**Dr. Gary McDarby**, is based in the Complex Adaptive Systems Laboratory in University College Dublin. He is the founder of the SMART (Stuart Mangan Assistive Rehabilitation and Technology) project which enables technical experts to work with people who have suffered a spinal injury. He is a founding director of Camara

(an organisation that distributes refurbished computers to schools in Africa) and the founder of the Liberties and Belfast Computer Clubhouses (educational initiatives using creative technology to empower marginalised young people). Gary has a background in Biomedical Engineering and Neuroscience (BE MEngSc PhD CEng) and his academic areas of research include Biomedical Signal Processing and Non-Stationary Signal Analysis using Wavelets. In the Neuroscience domain he is particularly interested in the ways that technology can play a profound and positive role in human evolution. Some of his research areas include technology in education, mental health, and the area of disability. He was formally a principal investigator at MIT Media Lab Europe heading up the MindGames group which was responsible for inventing the Relax to Win gaming platform, the Symphony Software suite and the Cerebus Brain Computer Interface.



**Tracy Meharg** is one of four Managing Directors in Invest Northern Ireland who, together with the Chief Executive, drive the agency's work to help stimulate local economic growth by helping businesses succeed. She heads up Invest NI's Innovation and Capability Development Group and has played a central role in

creating a strong and focused direction for Invest NI's work in this key area. This covers support for a wide range of business operations from product development through to international trading. Tracy's background in marketing and business development has given her a keen sense of the challenges that businesses face, and an appreciation of the type of support that companies need to help them maximise their potential. She has substantial experience of local economic development at a strategic level having previously worked in the Industrial Development Board (IDB) heading up its Information and Communication Technologies Division. Before joining IDB, Tracy worked in a number of marketing and public relations roles. Tracy has a BA from Trinity College Dublin and an MBA in International Business and Industrial Development from the University of Ulster. She also has a Diploma in Marketing from the Institute of Marketing and a Certificate in Communications Studies from the CAM Foundation.



**Frank McDonald** is Environment Editor of *The Irish Times*. He is the author of several books including *The Destruction of Dublin* (1985), *Saving the City* (1989) and *The Construction of Dublin* (2000); and joint author with James Nix on *Chaos at the Crossroads* (2005) and with Kathy Sheridan on *The Builders* (2008). A regular contributor

to radio and television programmes, he won the Outstanding

Work in Irish Journalism award in 1979, the Lord Mayor's Millennium Medal (1988), Chartered Institute of Transport Journalist of the Year (1998), two ESB National Media Awards (1999 and 2003) and a Lord Mayor's Award (2003). Conferred with an Honorary DPhil, Dublin Institute of Technology in 2006, he was made an honorary member of the Royal Institute of the Architects of Ireland in 2010. He was also a Press Fellow at Wolfson College, Cambridge, in 2008.



**Brendan Bartley** is a Senior Research Associate with the International Centre for Local and Regional Development (ICLRD). Prior to his retirement in 2009, Brendan lectured in Urban Geography and Planning at the National University of Ireland, Maynooth, where he was also Deputy Director of the National Institute for

Regional and Spatial Analysis (NIRSA). He holds professional qualifications in town planning and transportation planning, and prior to joining NUI Maynooth in 1994, worked as a professional planner in both the public and private sectors. He has been involved over the past 20 years in a number of European collaborative urban research networks in the connected areas of spatial planning, governance and urban regeneration.



**Dr. James Cunningham** is Director of the Centre for Innovation and Structural Change (CISC) and is a senior lecturer in Strategic Management at the J.E. Cairnes School of Business & Economics at NUI Galway. His main research interests focus on commercialisation, technology transfer, academic entrepreneurships and strategy

as practice. His research on technology transfer has been cited in the Irish Government's major strategy document entitled, *Strategy for Science Innovation and Technology* (published 2006). His co-authored book, entitled *Strategic Management of Technology Transfer: A New Challenge on Campus*, was described in a Business and Finance review as: "This book should be part of the policy library of our entrepreneurs, venture capitalists and top managers in ICT and R&D oriented sectors". Currently, he is co-principal investigator of a major study on principal investigators of publicly funded research in science, technology and engineering which is being supported by Irish Research Council for the Humanities and Social Sciences RDI Grant.



**Dr. Patricia O'Hara** is currently Chairperson of the National Statistics Board and Adjunct Professor at the National Institute for Regional Spatial Analysis (NIRSA), NUI Maynooth. As Policy Manager at the Western Development Commission (WDC) until 2009, she led a series of analyses and commentaries which formed the basis for policy advocacy on regional

issues. She also conceptualised and initiated **www.lookwest.ie**, the WDC's very successful promotional vehicle for the Western Region (involving counties, Donegal, Sligo, Leitrim, Roscommon, Mayo, Galway and Clare). Pat has chaired, and



## The Changing Business, Community and Spatial Planning Landscape: Doing More with Less

been a member of, various boards and advisory committees to government. Previously, she has worked as a Senior Research Officer at Teagasc, a lecturer at University College Cork, and a national and international consultant. She has written and published widely on development issues.



**Dr. Tim O'Connor** runs his own business providing strategic advice and support to Irish and international companies. Tim's clients include a mix of public and private sector companies involved in renewable energy, communications, tourism, and research and development in bio-chemicals. He also holds non-executive directorships

and serves on the Boards of numerous not-for-profits, including the ICLRD. Prior to starting his own business in March 2010, Tim had a 37-year career in the Irish Public Service, most recently serving as Secretary General to the President of Ireland (2007-2010). He was part of the negotiating team for the Good Friday Agreement and subsequently held the position as the inaugural Joint Secretary of the North South Ministerial Council from 1999 to 2005. Tim has also held foreign postings in the Irish Embassies in both Bonn and Washington DC, and most recently in New York as Consul General. Tim holds Honorary Doctorates from NUI Maynooth (2005), Quinnipiac University (Connecticut, USA) (2007) and the University of Ulster (2009).

## BACKGROUND TO THE CONFERENCE

Thank you for joining us for the sixth annual ICLRD conference in the Radisson BLU Hotel, Ballinacra, Sligo. Our annual ICLRD gathering plays an important role in shaping collaboration on the island of Ireland in the areas of spatial planning and local and regional development. The ICLRD conferences - which bring together decision and policy makers, practitioners and academics - have become a leading forum for debate, networking and mutual-learning for those interested in inter-jurisdictional cooperation.

The theme of this year's event is The Changing Business Community and Spatial Planning Landscape: Doing More with Less. The past twelve months has come to represent a time of change for the island of Ireland - with the evolving economic situation leading to debates on (a) the need for implementing a period of austerity to (b) the opportunities this scenario creates for renaissance and resurgence. In this context, the conference will focus on the changing budgetary, legislative and policy landscape, and the practical realities of reduced budgets, across the island of Ireland. The conference will also look to emerging opportunities in innovation to build recovery and economic competitiveness, as well as practical solutions to address the oversupply of land and housing.

We have organised the conference around four sessions. The first session considers how, in the context of severe budget cutbacks and legislative and policy changes (both proposed and on-going), the landscape for spatial planning and economic development in both jurisdictions - Northern Ireland and the Republic of Ireland - is changing. The second session explores the unprecedented short- and long-term challenges and impact on local and regional planning, as well as the sustainable communities agenda, of the proliferation of land banks and oversupply of housing across the island of Ireland and the border region. The third session discusses the critical role of innovation in securing economic recovery and the role for cross-border networking, collaboration and infrastructure in aligning the necessary building blocks required to drive the process and bring about the required linkages; while the fourth session debates the key messages emerging from this two-day

event in terms of what ideas can be harnessed, what should be the focus of future action, and what role does networking and collaboration play in bringing these opportunities to fruition.

This year's conference is sponsored by the Special EU Programmes Body under ICLRD's new Cross-Border Spatial Planning and Training Network (CroSPlan), an EU INTERREG IVA-funded programme. Both the Irish Planning Institute (IPI) and the Royal Town Planning Institute (RTPI) have agreed that this event could count as appropriate Continuing Professional Development (CPD) for their respective members; with members being reminded to note their learning, including learning outcomes, in their CPD record.

## WHO ARE WE?

The International Centre for Local and Regional Development (ICLRD) is a North-South-US partnership to explore and expand the contribution that spatial planning and development of the physical, social and economic infrastructure can make to peace and reconciliation on the island of Ireland and elsewhere. The ICLRD has developed out of a unique collaboration between academics and spatial planning specialists from the National Institute for Regional and Spatial Analysis (NIRSA) at the National University of Ireland Maynooth, the School of the Built Environment at University of Ulster, the Centre for Cross Border Studies in Armagh, and the Institute for International Urban Development in Cambridge, Massachusetts. ICLRD is pleased to be working with faculty and researchers from: the Joint Center for Housing Studies at Harvard University; Mary Immaculate College, University of Limerick; and Queens University Belfast. Further information is available at [www.iclrd.org](http://www.iclrd.org)

The Cross-Border Spatial Planning and Training Network (CroSPlan) is an EU INTERREG IVA-funded programme administered by the Special EU Programmes Body. The objective is to strengthen the policy and operational linkages between central and local policy makers and among officials and practitioners involved in spatial planning in the Irish border region. In addition to the 2011 annual ICLRD conference,



## The Changing Business, Community and Spatial Planning Landscape: Doing More with Less

CroSPlaN is undertaking two action research studies, an executive training programme and a technical workshop as part of the 2010/2011 activities. CroSPlaN is one of a series of initiatives within the Ireland/Northern Ireland Cross-Border

Cooperation Observatory (INICCO) managed by the Centre for Cross Border Studies. Further information can be found at [www.crossborder.ie](http://www.crossborder.ie).



*Members of the ICLRD Team at the 2010 Annual Conference in Enniskillen*

## CONTACTS

### **INTERNATIONAL CENTRE FOR LOCAL AND REGIONAL DEVELOPMENT (ICLRD)**

The Director of the International Centre for Local and Regional Development is John Driscoll and its Administrator is Eimear Donnelly.

They can be contacted at the  
Centre for Cross Border Studies  
39 Abbey Street  
Armagh BT61 7EB  
Northern Ireland

**Tel:** 028 (048 from the Republic) 3751 1550

**Fax:** 028 3751 1721

**Emails:** [driscoll@iclrd.org](mailto:driscoll@iclrd.org) (John Driscoll)  
[eimear.donnelly@qub.ac.uk](mailto:eimear.donnelly@qub.ac.uk) (Eimear Donnelly)

**WEBSITE – [www.iclrd.org](http://www.iclrd.org)**

Radisson Blu Hotel, Ballinacra, Sligo **[www.radissonblu.ie/hotel-sligo](http://www.radissonblu.ie/hotel-sligo)**

*THE ICLRD IS SUPPORTED BY THE EU INTERREG IVA-FUNDED PROGRAMME ADMINISTERED BY THE SPECIAL EU PROGRAMMES BODY, THE IRISH GOVERNMENT THROUGH THE HIGHER EDUCATION AUTHORITY, THE NORTHERN IRELAND EXECUTIVE.*