

Planning, the built environment and community : integrating insights, processes and practices

Mary P. Corcoran
Sociology and NIRSA
NUIM
January 20, 2012

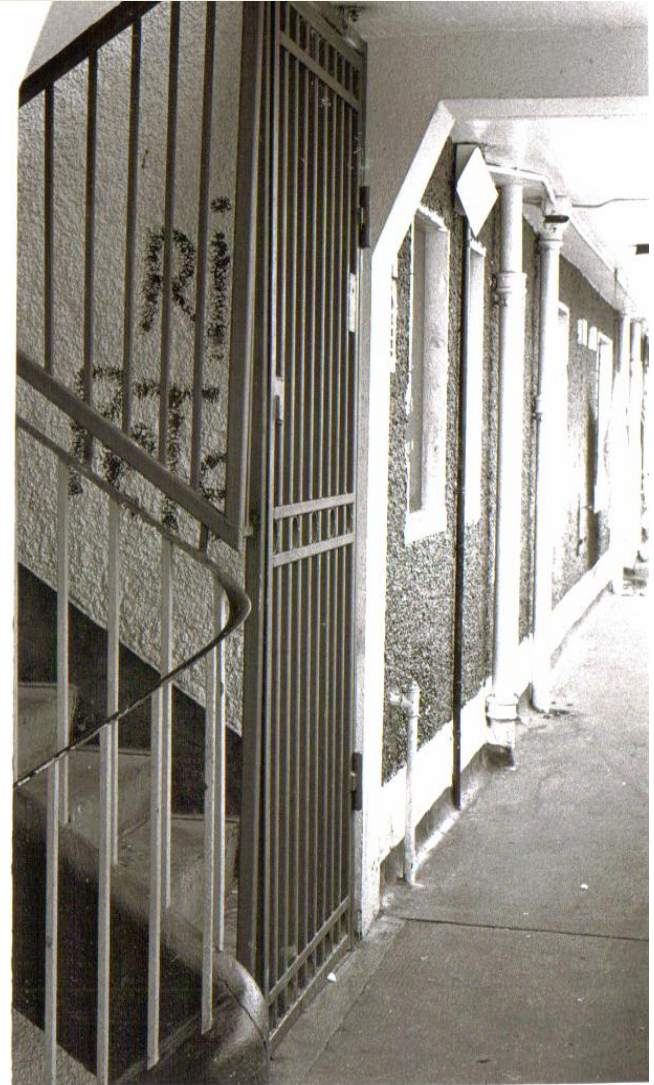
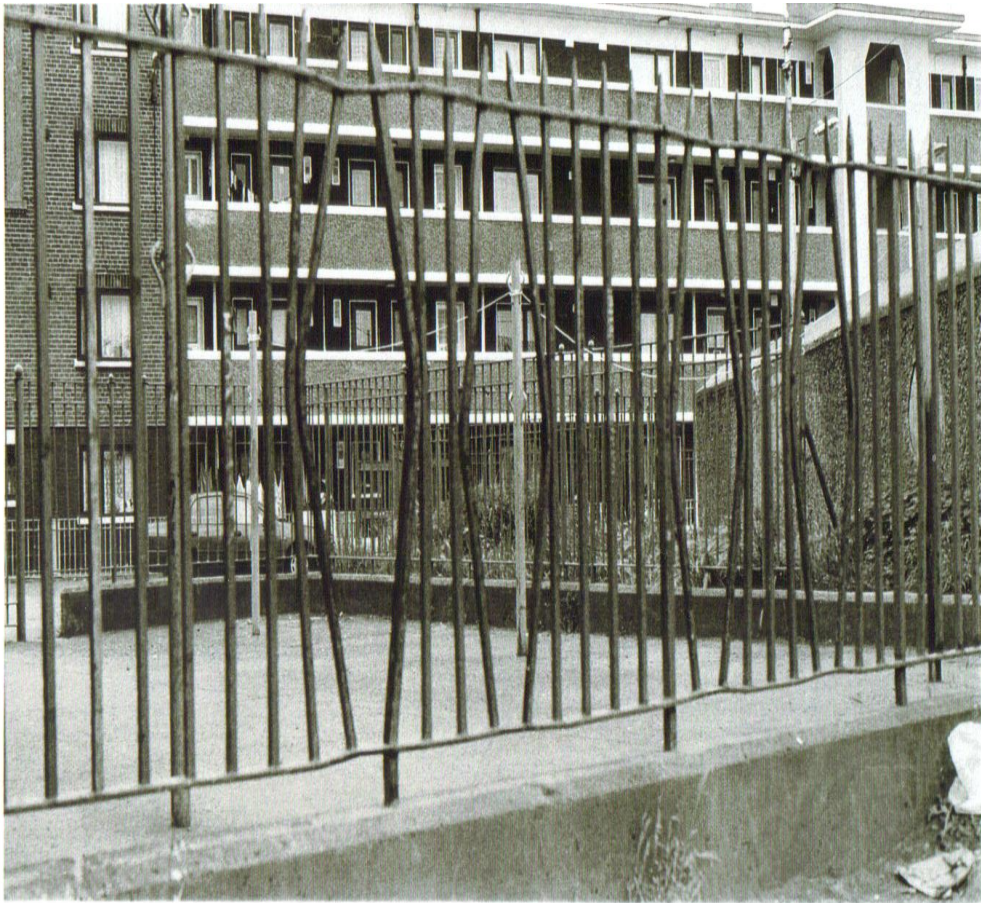
Engaging with the built environment

- Developer-led development- (N)AMAZING
- Community-led development- FATIMA MANSIONS
- Interdisciplinary Planning-IRCHSS SUMMER SCHOOL 2011
- Conclusions

[Features of Fatima]

- Spatial segregation
- Relative deprivation
- Internal stratification within estates
- Symbolic representation/stigmatization
- Enduring communities
- Possibility of resistance and change

[Fatima 1998]



Dialogical planning and the rejuvenation of Fatima

- Making Fatima a Better Place to Live (1998)
- Eleven Acres, Ten Steps (2000)
- Regeneration/New generation (2001)
- Fatima Regeneration Board (2002)
- 8 Great expectations (2005):
 - creating a safe and sustainable community,
 - education,
 - health and well being,
 - employment training & enterprise,
 - arts & culture,
 - sports & recreation,
 - environment,
 - planning and design of community facilities
- Dream Dare Do (2006) www.fatimagroupsunited.com

[New Fatima



[IRCHSS Summer School aim]

- To bring together academics, students and practitioners from a range of disciplines to share knowledge and to work on developing epistemological and methodological protocols for advancing both practice and research with regard to the built environment

We Attended the Field Trip

We Collated Our Impressions

We Identified Structural & Sociological Causes

We Identified Structural & Sociological Effects

We Propose Changes for Ensuring these Causes Don't Occur Again

We Propose Changes that need to happen to Mitigate the Symptoms

Recommendations for the Summer School

Recommendations for Further Studies



DENKMAL GERMANY- COLLECTIVE MEMORY



RACHEAL WHITEREAD – REFLECTION & AWARENESS



DOROTHY CROSS - GHOST SHIP – NATIONAL IDENTITY



COMMONAGE FOR COMMUNAL INTERVENTION – e.g. RETREAT CENTRE – COMMUNITY RUN HOLIDAY HOMES



NEW ZONE

**PRESERVATION ORDER FOR
PSYCHOLOGICAL LANDSCAPE**
REFLECTION & COMMUNITY USE





clongriffin
www.clongriffin.ie

www.clongriffin.ie

clongriffin

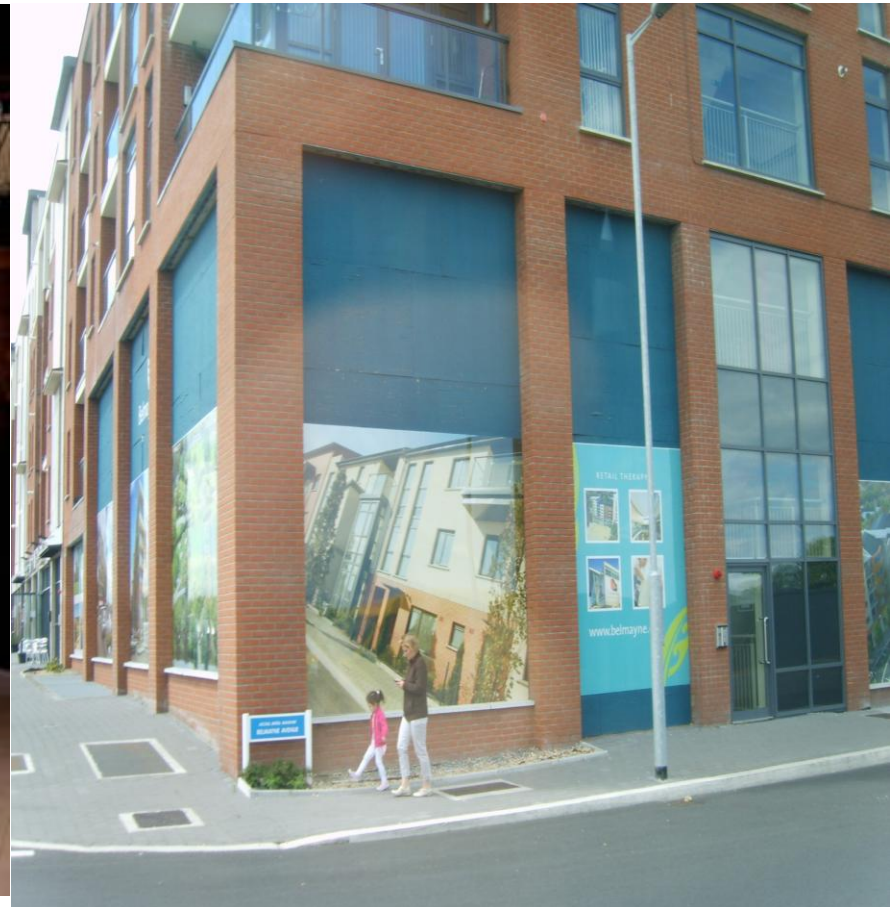
www.clongriffin.ie

clongriffin

coming soon

coming soon

“If we could have just finished it, it would have been great.”



SQUATTING



Acknowledging subversive practice in relation to the built environment



- **Constant multi-disciplinary collaboration has the potential to allow for the retention of the good and elimination of the bad in subversive practice.**

TO THE REPONSES BUILT ENVIRONMENT

ARCHITECT

URBAN DESIGN

PLANNER

SOCIOLOGY

LANDSCAPE ARCHITECT

NUALA

Deirdre

TONY

Angela

JOHN

Aine

CIARA

DICK

CAROLINE

RORY

CONSERVATION HISTORY MAP.

WHAT WAS!

ATTITUDE OF PEOPLE

CLIENT/BRIEF

USE MAP → HOW PEOPLE USE IT!

SAFETY MAP

OBSERVATION OF HOW SPACE IS OCCUPIED

WALKING SURVEY

IDEAS around retro-fitting

QUALITATIVE AUDIT

CONSIDERATION OF VIRTUAL ENVIRONMENT

MACRO VIEW

WHAT IS!

LEGIBILITY MAP

INFORMAL INTERVIEW

INSTITUTIONAL MAP.

PUBLIC SPACE MAP

Observation of Site - Audit of Site

Analysis of town layout LINKS

ANECDOTAL EVIDENCE

DESIRE LINES.

NODES OF LEARNING STATIONARY MOVING

TALK TO PEOPLE

ECONOMIC LANDSCAPE

EXISTING RESOURCE MAP

Collaborate with locals their views

Physical/Social Infrastructure

SEE THROUGH S.O. ELSE'S EYES

MOVEMENT? TRAFFIC ROADS STREETS } Emphasises

MAP SITE ANALYSIS

Public consultation

HABITAT ECOLOGY GREEN ENVIRONMENT

SWOT

SYSTEMIC CHANGE

POSITIVE REFRAMING

Concept of Site - Where? can be integrated, linked

Interventions

VISIONING ASSETS/DEFICITS SHAPE MAP + OF SUCCESS

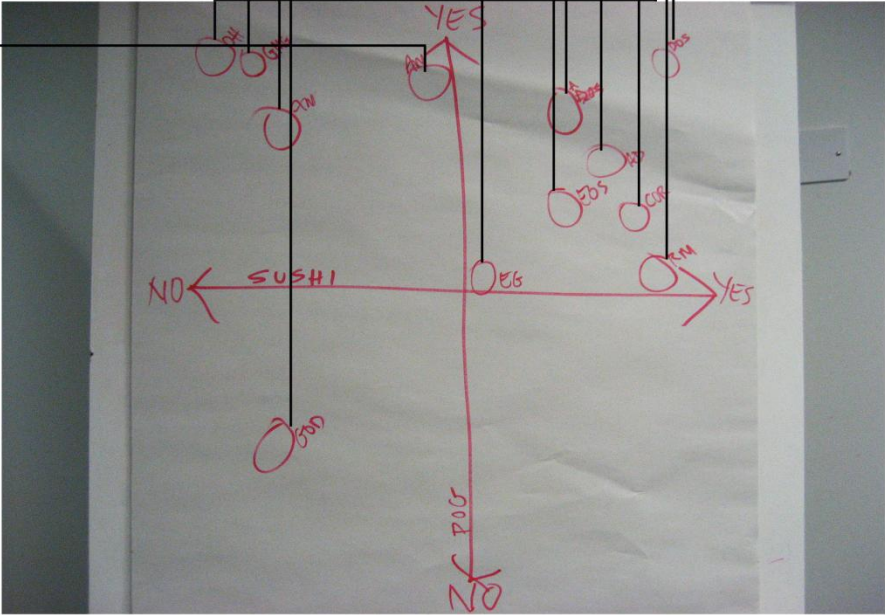
WHAT COULD BE!

PROPOSALS

Strategic Vision Plan ensure Infrastructure + one in Residential sync



Alan Mee Antoin Doyle Eoghan O'Shea Emma Geoghegan Archie O'Donnell Grainne McGill Aidan Melia Olivia Hillery Ruth Morrow Devyn Olson-Sawyer Gerard O'Donoghue Celine O'Rourke



[Conclusions]

- Place matters
- Community matters
- Working together matters
- www.nirsa.ie/events/irchsssummerschool