



The Practitioner's Toolkit
The role of strategies and tools for evidence-based spatial planning

May 2nd 2013
Canal Court Hotel, Newry

Justin Gleeson, All-Island Research Observatory (AIRO)



Outline

- The Practitioner's Toolkit(s) – tools for evidence based spatial planning
 - Socio-Demographic & Census
 - All-Island Research Observatory (AIRO)
 - NISRA
 - ICLRD
 - Land Use Planning
 - MyPlan.ie
 - Environment
 - EPA
 - GSI/GSNI
 - Flood Mapping
 - Wind Energy
 - Regional Monitoring Systems
 - Regional Planners Network
 - AIRO demonstrations throughout the day



Socio-Demographic Toolkit: All-Island Research Observatory (AIRO)

- AIRO is a **research unit** and **spatial data portal** focused on improving evidence informed planning in Ireland
 - Collects, analyses and provides evidence and tools to support better planning and decision making
 - Maps, data, policy advice, research and training
 - Maximise the **usage and benefit** of publically funded and readily available datasets
 - Highlight the benefit of **proper collection, management and dissemination of datasets**
- Who do we work with?
 - Government Departments
 - Semi-State bodies
 - Regional Authorities, Local Authorities, Local Partnerships, Charities etc
 - Academics, Researchers, Public
 - Funding Bodies (ESPON, SEUPB, INTERREG)

Improving evidence informed planning on the island of Ireland **AIRO**.IE

AIRO
All-Island Research Observatory
An tSion Breathaíthe um Thuairiscí Uile Éireann

+ MAPS
 + STATISTICS
 + RESEARCH
 + TRAINING
 + POLICY
 + CONSULTANCY

Source: Building the National Spatial Information Framework (NSIF) 2009-12

Socio-Demographic Toolkit: All-Island Research Observatory (AIRO)

- Variety of tools and datasets available on/via the AIRO website
 - Mapping Modules
 - Spatial Indicators
 - Map Library
 - News and Events (data releases, training, workshops etc)



Socio-Demographic Toolkit: All-Island Research Observatory (AIRO)

- Mapping Modules – Socio-Demographic Toolkit
 - Mapping partners with the Central Statistics Office (CSO) to improve the dissemination of Census 2011 results
 - Public sector reform, important collaboration between public sector bodies to improve access to publically funded data
- Individual **Local Authority (34)** and **Regional Authority (8)** Census mapping tools available on the AIRO site
 - InstantAtlas (GeoWise) software
 - Full set of variables for 2006 and 2011 at ED and SA level
 - 15 themes
 - Population, Nationality, Religion, Economic Status, Industry, Housing, Transport, Internet Access etc
 - Additional research output now included: accessibility scores to public facilities/retail, Deprivation Indices
 - » Coming soon.....POWCAR, LPT
- **Let's have a look** (<http://www.airo.ie/mapping-module/atlas/HTML/Louth>)

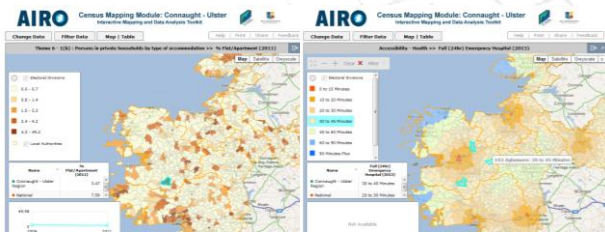
Socio-Demographic Toolkit: All-Island Research Observatory (AIRO)

- Invitation to LA and RA to embed these tools within corporate website
 - Planning sections, Community and Enterprise etc
 - No requirement for dependence on GIS/IS staff
 - 10 minute job for IT technician to create i-frame and embed link
 - It's a toolkit for planners, policy makers and researchers



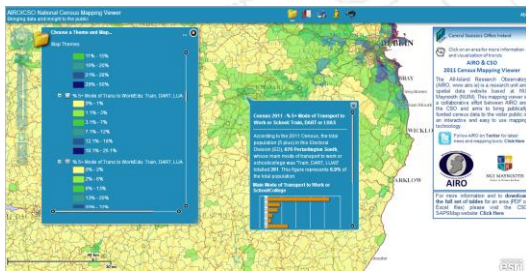
Socio-Demographic Toolkit: All-Island Research Observatory (AIRO)

- Planning reform in Republic of Ireland
 - 3 new Regional Assemblies
 - Connacht-Ulster Region
 - Southern Region
 - Eastern-Midland Region



Socio-Demographic Toolkit: All-Island Research Observatory (AIRO)

- National Census Mapping Viewer
 - Requirement to display all 18k boundaries
 - Published maps to ArcGIS for Server and displayed through ArcGIS Viewer for Flex
- 260+ maps on all census themes
- Counts, percentages and ratios
- Let's have a look (<http://airomaps.nuim.ie/census2011>)



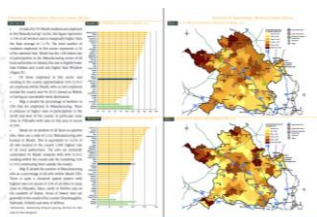
Socio-Demographic Toolkit: All-Island Research Observatory (AIRO)

- POWSCAR
 - Place of Work, School or College Census of Anonymised Records
 - 2.78m O-D trips
 - 1.01m students
 - 1.77m workers
 - SA/ED to 250M grid/SA/ED
 - Catchments to Cities/Towns
 - Open to suggestions on further developments

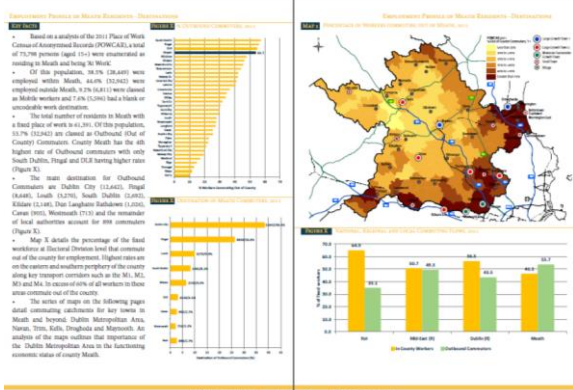


Socio-Demographic Toolkit: All-Island Research Observatory (AIRO)

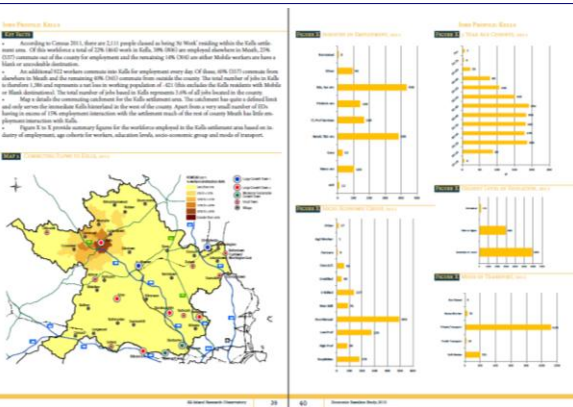
- Regional Spatial and Economic Strategies
 - Development of local economic baseline
 - Demographic profiling
 - Employment status
 - Industry of Employment
 - Labour catchments
 - Education
 - Critical Mass and marketing of potential employment destinations
 - Pilot project with Meath County Council



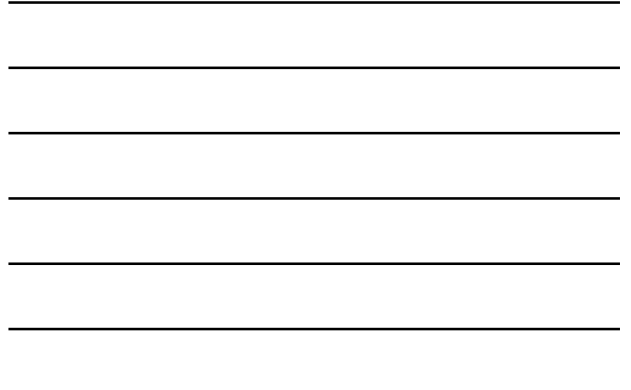
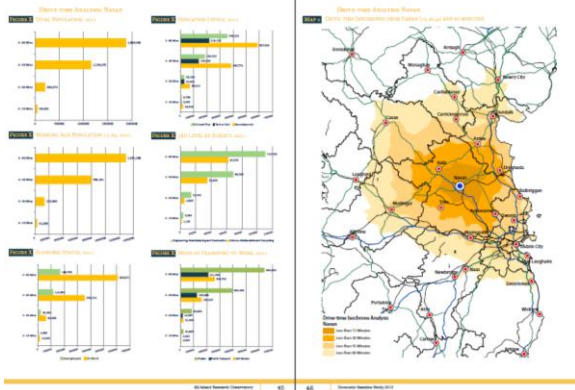
Socio-Demographic Toolkit: All-Island Research Observatory (AIRO)



Socio-Demographic Toolkit: All-Island Research Observatory (AIRO)



Socio-Demographic Toolkit: All-Island Research Observatory (AIRO)



Socio-Demographic Toolkit: All-Island Research Observatory (AIRO)

- Northern Ireland Census 2011
 - Northern Ireland Statistics and Research Agency (NISRA)
 - **First release – Phase 1** 16 July 2012: Population by age and sex for Northern Ireland.
 - **Phase 2** 19 September 2012: Population by age and sex for Local Government Districts.
 - **Second release – Phase 1** - 11 December 2012: Key statistics for Northern Ireland and Local Government Districts.
 - **Phase 2** – 30 January 2013: Key Statistics for Assembly Areas (AAs), Electoral Wards, Super Output Areas (SOAs) and Small Areas (SAs).
 - **Phase 3** – 28 February 2013: Quick Statistics for all geographies and Population and Household Estimates for lower geographies.
 - **Third release – Phase 1** – 16 May 2013: Detailed Characteristics for Northern Ireland (including Religion, Identity and Health).
 - **Phase 2** – June - July 2013: Detailed Characteristics for Northern Ireland.
 - **Phase 3** – August - September 2013: Detailed Characteristics for the remaining geographical levels.
 - **Fourth release** – September - December 2013 Local Characteristics and Detailed Theme.
 - **Subsequent releases of specialist products**
 - [Microdata](#)
 - [Flowdata](#)
 - [Alternative population bases](#)
 - [UK Population estimates](#)
 - [Commissioned tables](#)
 - [Northern Ireland Census 2011 reporting and analysis](#)

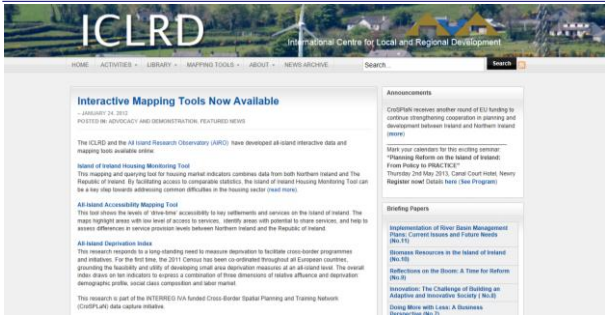


Socio-Demographic Toolkit: All-Island Research Observatory (AIRO)

- Northern Ireland Census 2011
 - Northern Ireland Statistics and Research Agency (NISRA)

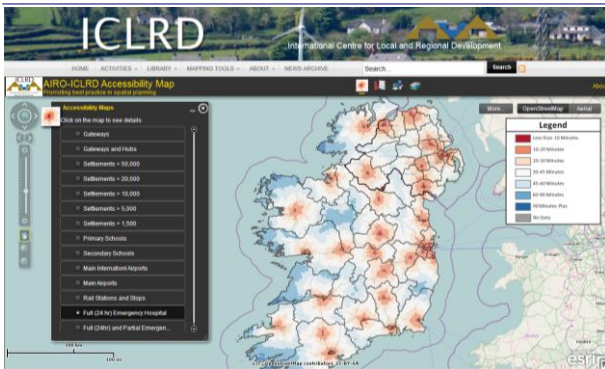


Socio-Demographic Toolkit: All-Island Research Observatory (AIRO)



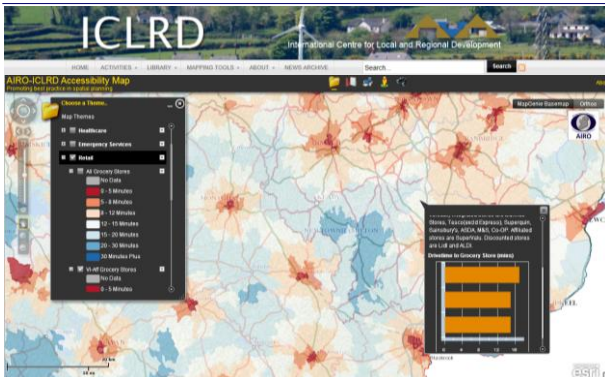
- AIRO & ICLRD collaboration on cross-border data analysis projects

Socio-Demographic Toolkit: All-Island Research Observatory (AIRO)



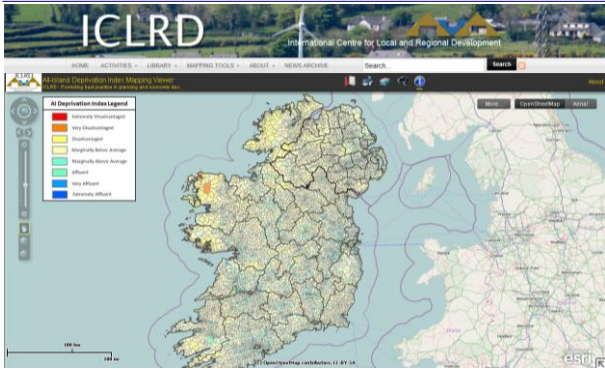
airomaps.nuim.ie/airoaccessmap

Socio-Demographic Toolkit: All-Island Research Observatory (AIRO)



airomaps.nuim.ie/airoaccessmap

Socio-Demographic Toolkit: All-Island Research Observatory (AIRO)



airomaps.nuim.ie/AIdepindex

Socio-Demographic Toolkit: All-Island Research Observatory (AIRO)



airomaps.nuim.ie/AIdepindex

Socio-Demographic Toolkit: All-Island Research Observatory (AIRO)



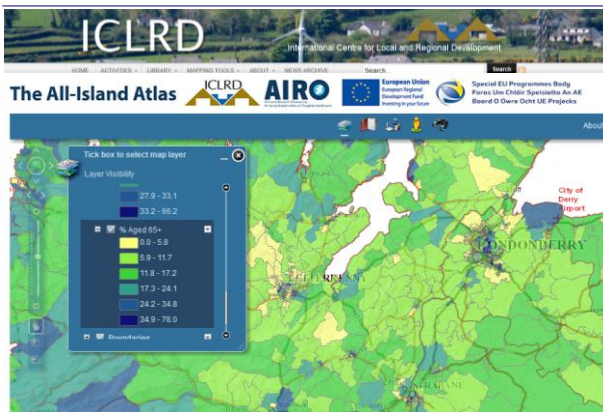
- **INNICO / INTERREG: Evidence Based Planning**
- **Develop an All-Island on-line Digital Atlas Tool**
 - All-Island
 - Cross Border specific
 - Local Authority/Local Government District
- **Census Seminars** (preliminary analysis)
- **All-Island 2011 Deprivation Index & All-Island Travel to Work mapping**
- **DATA days:** workshops on using data to support evidence informed planning, funding applications etc
- **Digital Atlas Hard Publication**
 - Sectoral analysis (population, education, transport, health, housing, environment etc)
 - Expert commentary from NI and RoI academic/policy community
 - Cross Border case-studies

Socio-Demographic Toolkit: All-Island Research Observatory (AIRO)

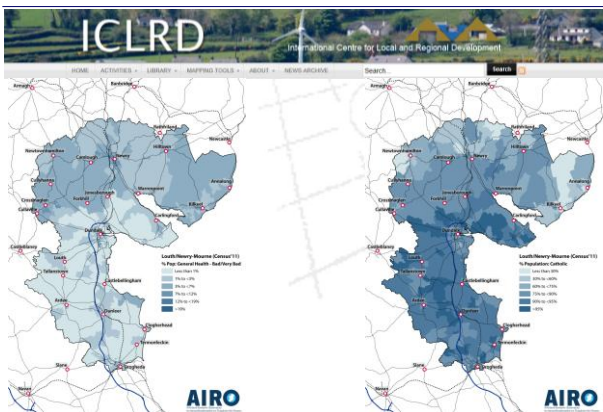


- **INNICO / INTERREG: Evidence Based Planning**
- **Develop an All-Island on-line Digital Atlas Tool**
 - All-Island
 - Cross Border specific
 - Local Authority/Local Government District
- **Census Seminars (preliminary analysis)**
- **All-Island 2011 Deprivation Index & All-Island Travel to Work mapping**
- **DATA days: workshops on using data to support evidence informed planning, funding applications etc**
- **Digital Atlas Hard Publication**
 - Sectoral analysis (population, education, transport, health, housing, environment etc)
 - Expert commentary from NI and RoI academic/policy community
 - Cross Border case-studies

Socio-Demographic Toolkit: All-Island Research Observatory (AIRO)



Socio-Demographic Toolkit: All-Island Research Observatory (AIRO)

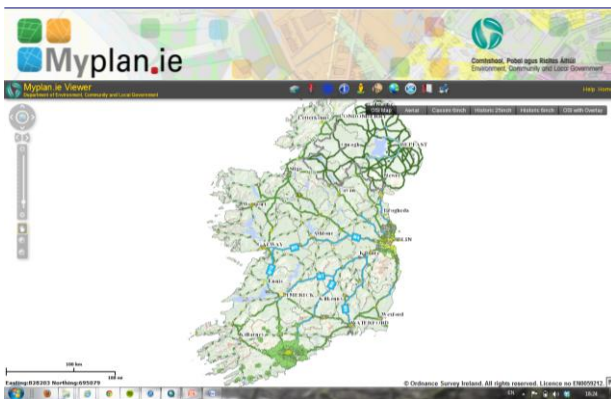


Land-Use Toolkit: MyPlan.ie

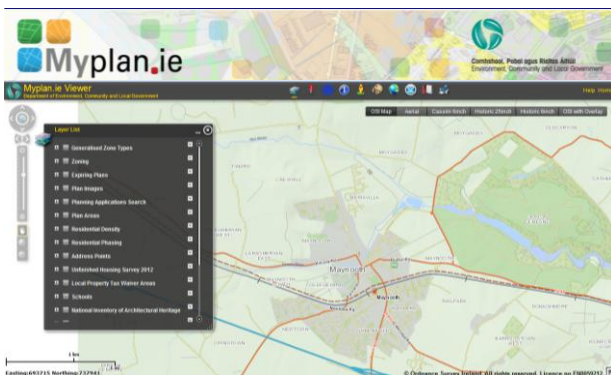


- Major reform of planning data in ROI local authorities
 - Classification, management, analysis and storage of digital planning data
 - Zoning (Development Plans, Local Area Plans, Other Plans)
 - Residential Density
 - Address Data
 - Unfinished Estates/LPT Waiver Areas
 - Education
 - Architectural Heritage Areas
 - National Monuments
 - OPW Flooding
 - Designated Areas
 - Overview of planning at all levels
 - DECLG, NTA, NAMA, ABP, Regional Authorities, Public
 - Requirement on Planners/GIS Officers to now develop MyPlan compliant zoning boundaries
 - There is now 1 way to develop digital plans!
 - GIS Best Practice Guidance
 - Training modules, CPD on Planning Data & MyPlan

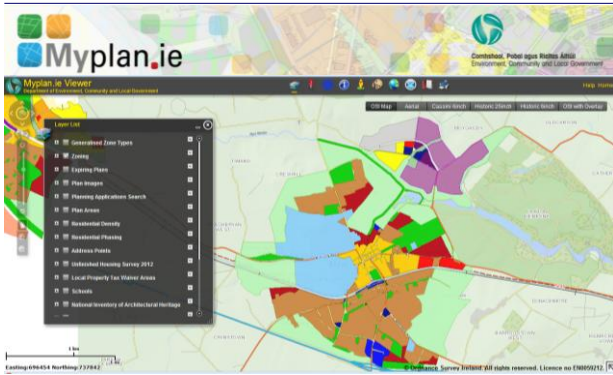
Land-Use Toolkit: MyPlan.ie



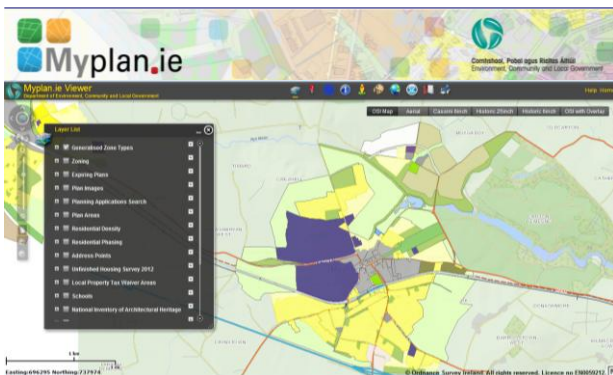
Land-Use Toolkit: MyPlan.ie



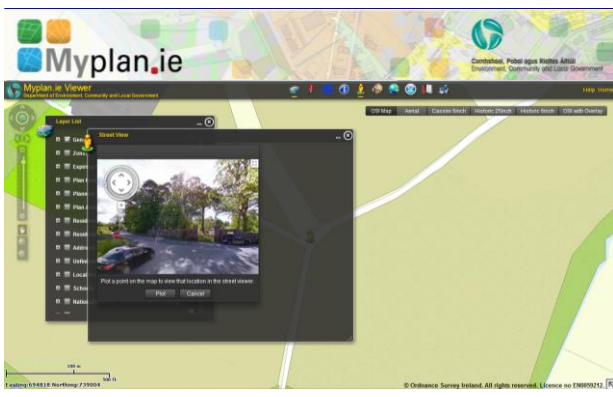
Land-Use Toolkit: MyPlan.ie



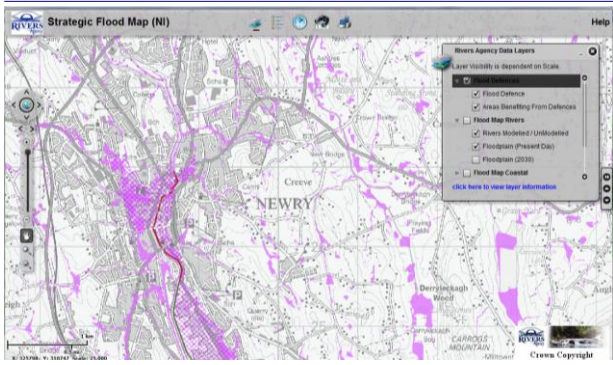
Land-Use Toolkit: MyPlan.ie



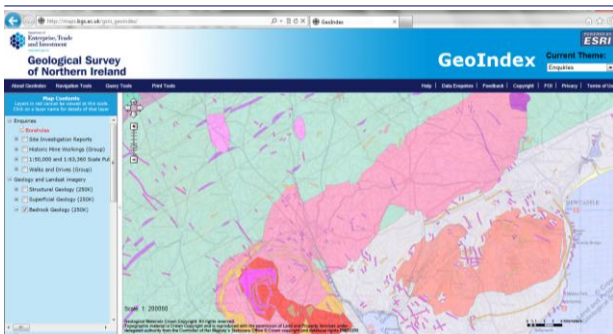
Land-Use Toolkit: MyPlan.ie



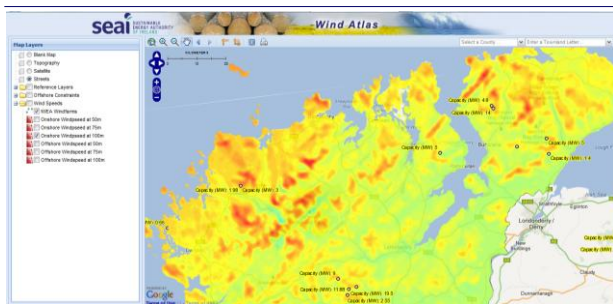
Environmental Toolkit



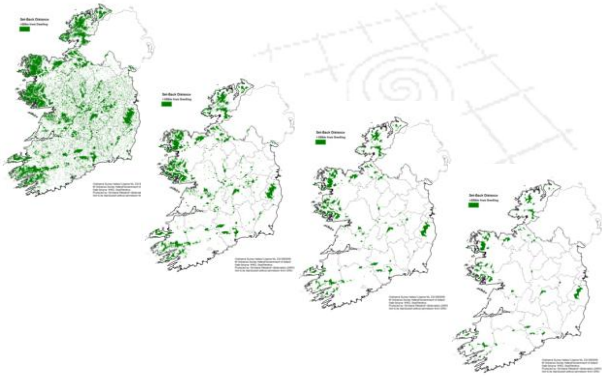
Environmental Toolkit



Environmental Toolkit



Environmental Toolkit



Monitoring Systems – Regional Planning Guidelines (RPGs)

- Regional Planning Guidelines Indicators initiative developed by Regional Planners Network (RPN)
- Need for a monitoring framework to measure progress of (RPGs) 2010-2022
 - Develop a baseline for the RPG mid-term reviews in 2013/14
- Proposed Regional Indicators
 - Economic Prosperity
 - People and Place
 - Environment and Infrastructure
- Methodology
 - RPG Aim and Objective
 - Proposed Indicators
 - Unit of Measurement
 - Target
 - Data Source
 - Presentation of Data: Mapping, Tables, Text
 - Expected Analysis and Outputs



Monitoring Systems – Regional Planning Guidelines (RPGs)

| Area Name and Description | Proposed Indicator | Unit | Targets | Data Source (Frequency, Geographical Availability and Frequency of Data) | Availability of Data (Mapping, Tables, Text, etc.) | Expected Analysis & Outputs | Summary of Actual Outputs and Results of Data Collection (Does the indicator work, what recommendations are proposed for a revised, better or consolidated indicator?) |
|--|--|------|---|--|--|--|---|
| Incidental central land in Region, Galway, Mid & West Settlement | Incidental central land in Region, Galway, Mid & West Settlement | Ha | 100% of land in Region, Galway, Mid & West Settlement | CSO Census, ROSCAR, ROSCAR data on ROSCAR/Plan | Mapped using ROSCAR data on ROSCAR/Plan | Thematic Overview Map, Smaller Thematic Maps | Total amount of housing land availability within your functional area and the amount of this housing land in the ownership of the local authority. This process was updated annually via Circular Housing No. 27 (2012). Data for 2012 is due shortly and can be used to look at trends in housing land management. |
| Highly Sustainable and Greater Accessibility in the Galway, Mid and West Settlements | Highly Sustainable and Greater Accessibility in the Galway, Mid and West Settlements | Ha | 100% of land in Region, Galway, Mid & West Settlement | CSO Census, ROSCAR, ROSCAR data on ROSCAR/Plan | Mapped using ROSCAR data on ROSCAR/Plan | Thematic Overview Map, Smaller Thematic Maps | Please refer to sample mapping below. |
| Highly Sustainable and Greater Accessibility in the Galway, Mid and West Settlements | Highly Sustainable and Greater Accessibility in the Galway, Mid and West Settlements | Ha | 100% of land in Region, Galway, Mid & West Settlement | CSO Census, ROSCAR, ROSCAR data on ROSCAR/Plan | Mapped using ROSCAR data on ROSCAR/Plan | Thematic Overview Map, Smaller Thematic Maps | Please refer to sample mapping below. |

- Move from static reports to live monitoring systems
 - Annual, Quarterly updates
 - Time-series data
- Planners, Elected Members, Public
 - Share data, information through email, blogs, websites
 - Evidence to be used as basis for discussion and decision making
- Interactive Graphics
 - Unemployment (Monthly, Quarterly)
 - Counting (Census)
- Interactive Maps

Improving evidence informed planning on the island of Ireland AIRO.IE



Thanks

Questions?

w: www.airo.ie
e: airo@nuim.ie
twitter: [airo_nuim](https://twitter.com/airo_nuim)
