

Implementing the National Planning Framework: Strengths and Opportunities



The **critical relationship** between the concepts of the **NPF**, the **NW City Region** and the **County Plan**



CDP
2018- 2024



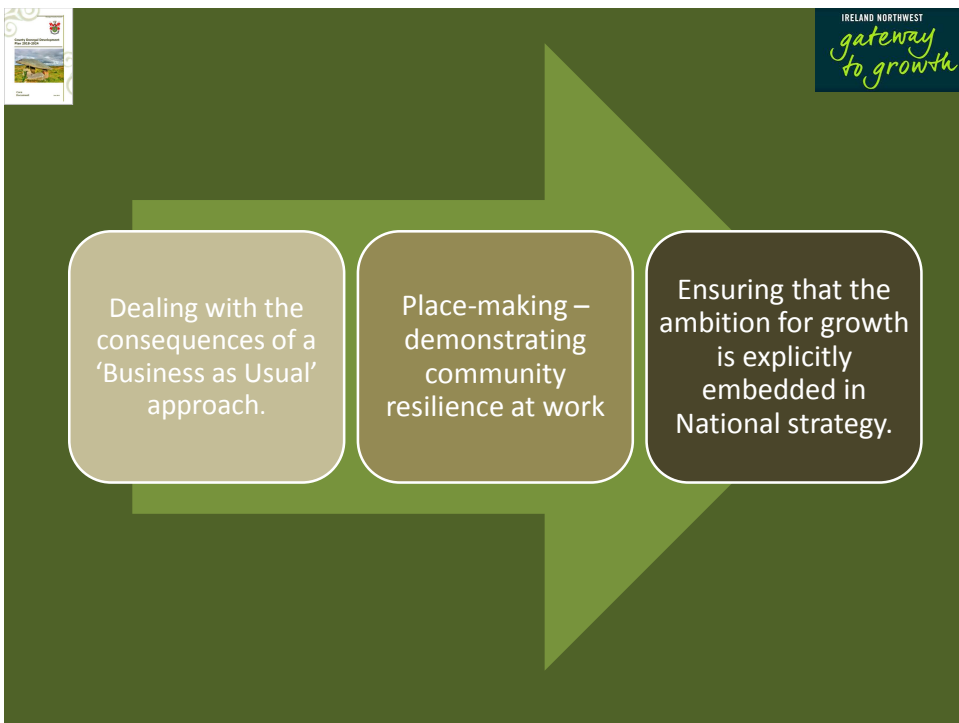
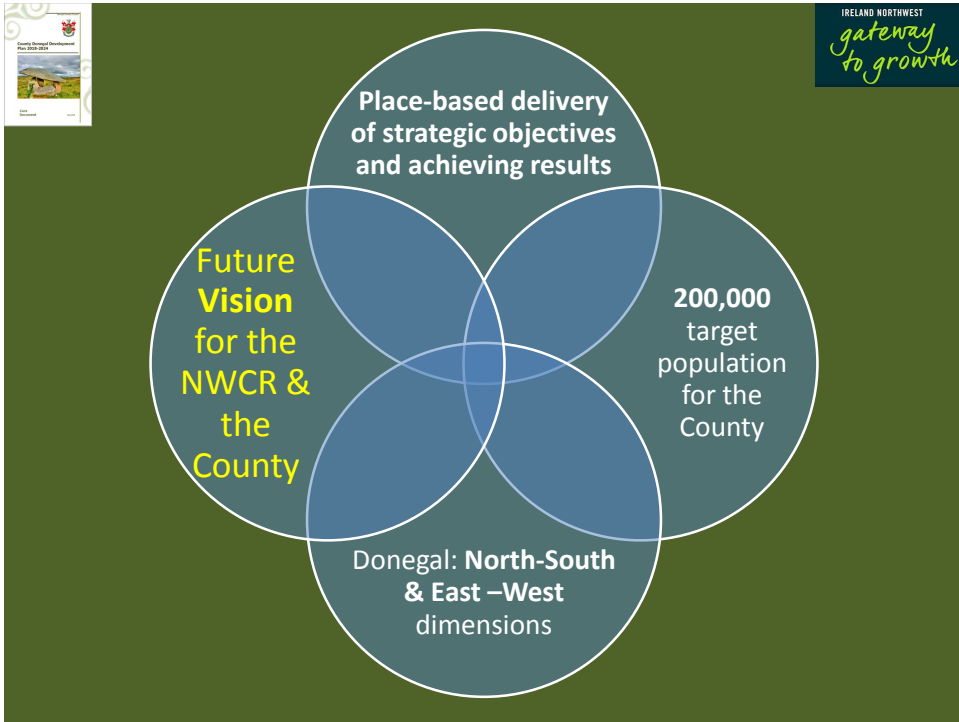
North West
City Region



**Ireland
2040
Our Plan**

The
National
Planning
Framework
& RSES



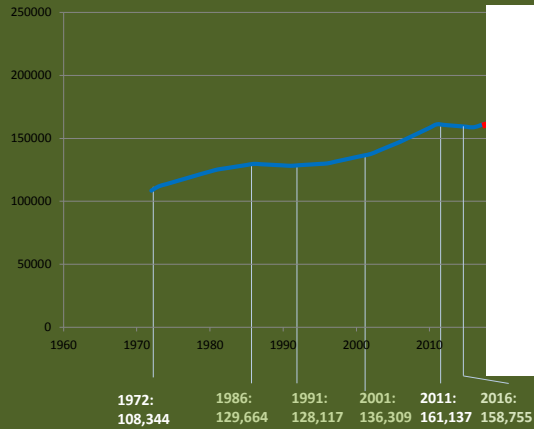




IRELAND NORTHWEST
gateway to growth

Population change in context:

Overall positive & upwards growth of 50,411 people over 45 years



IRELAND NORTHWEST
gateway to growth

Challenge

- **Ambitious** approach to growth -
Requires **continuous aggressive**
approach and **determined interventions**

What are the priorities for determined interventions?

IRELAND NORTHWEST gateway to growth

TRAVELLER Tourism

Roads & access

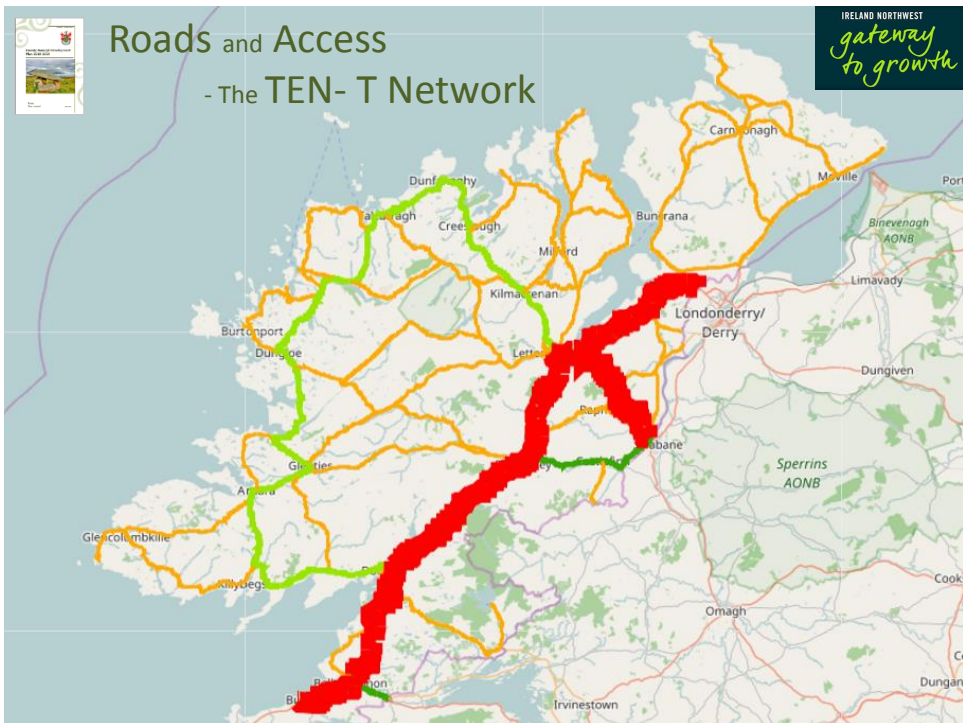
Renewal & Regeneration

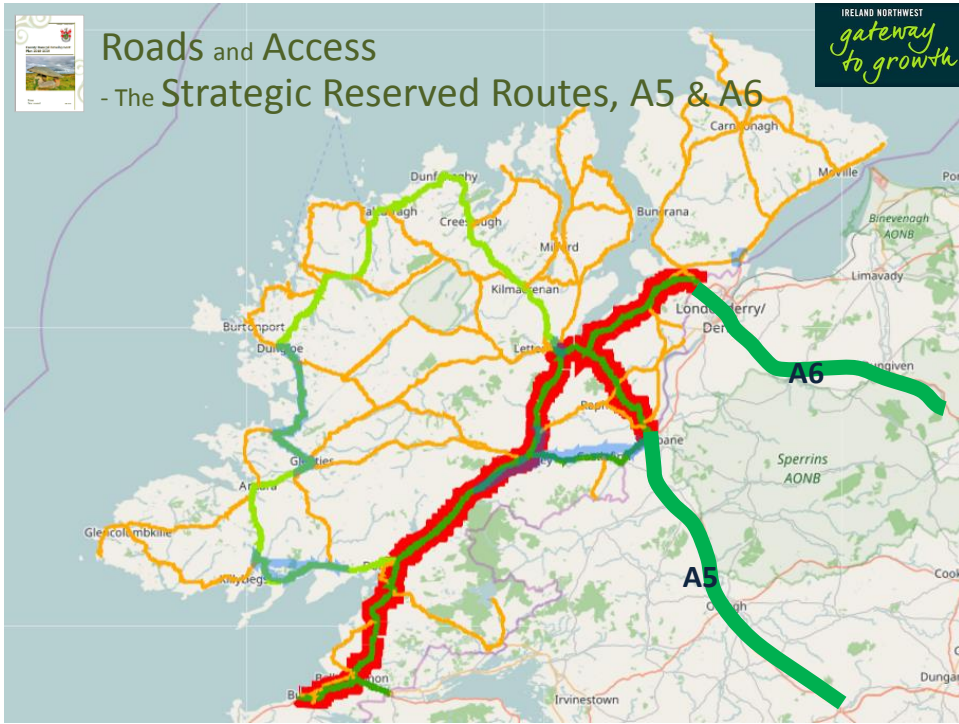
Economic Development

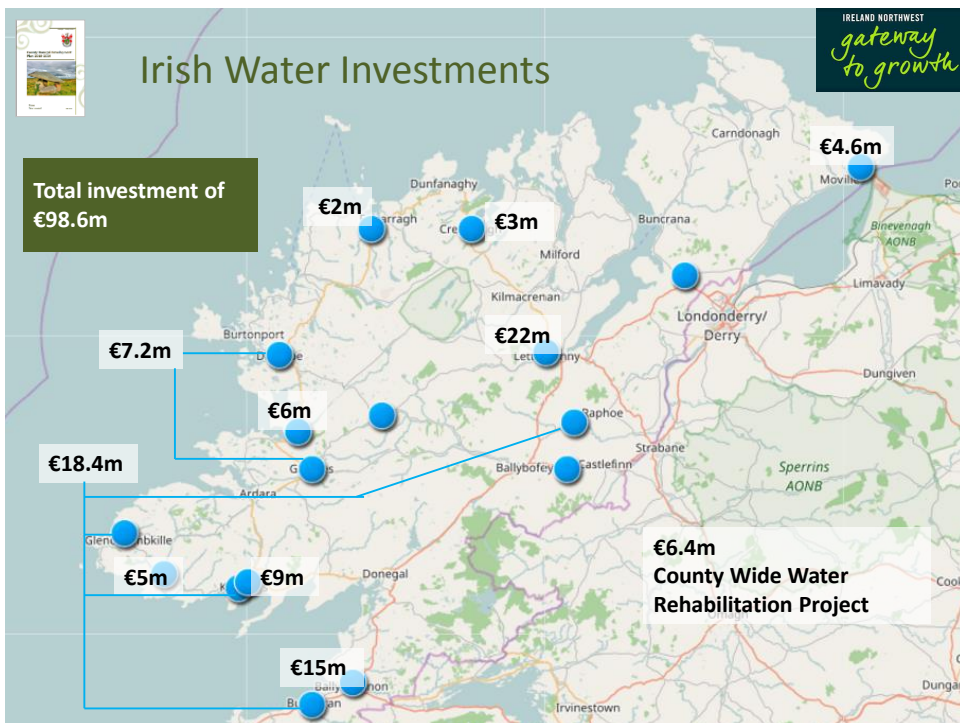
Collaboration

Water Services

Environmental Resources









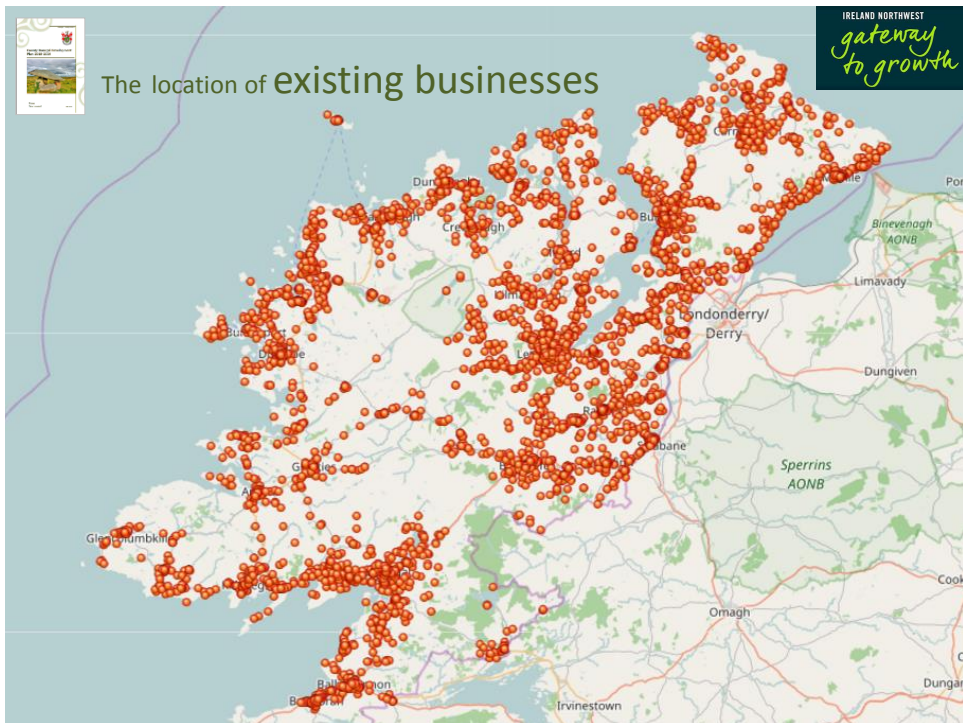


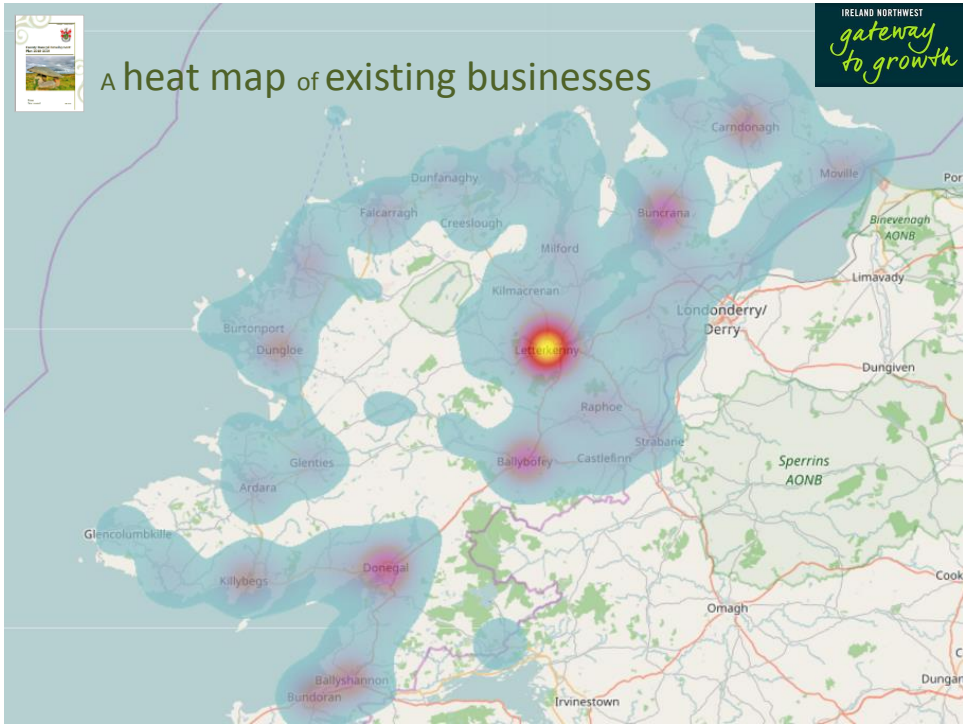


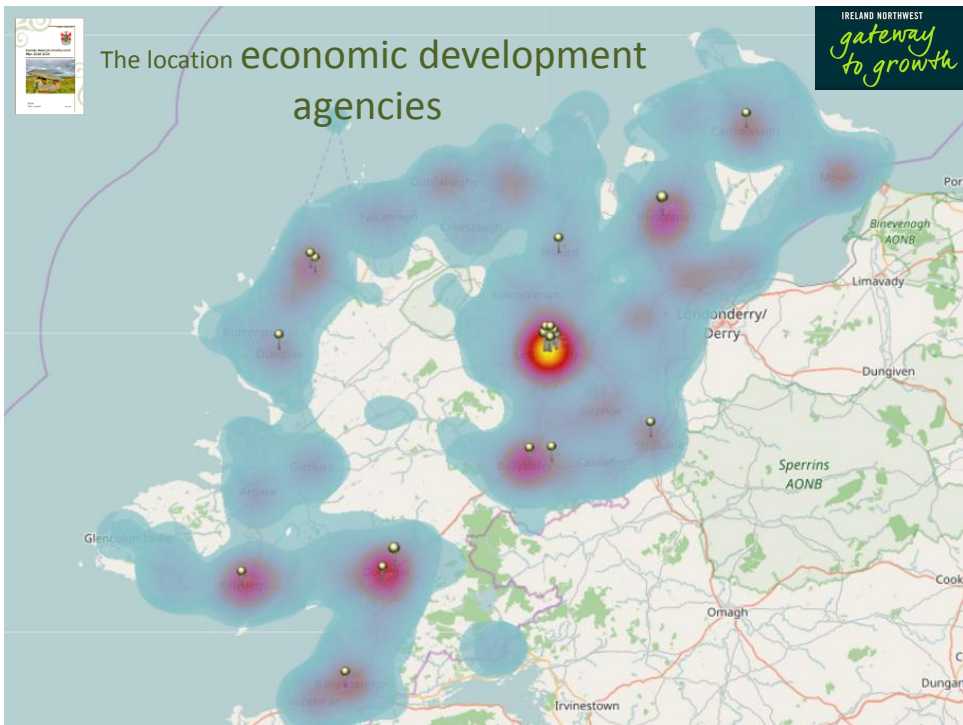


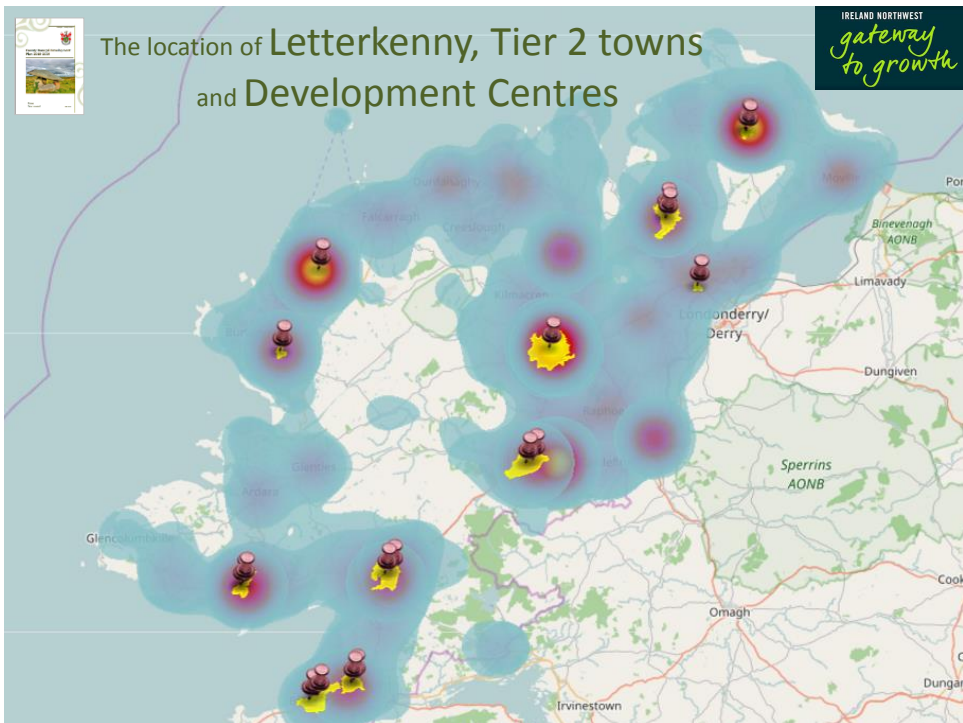


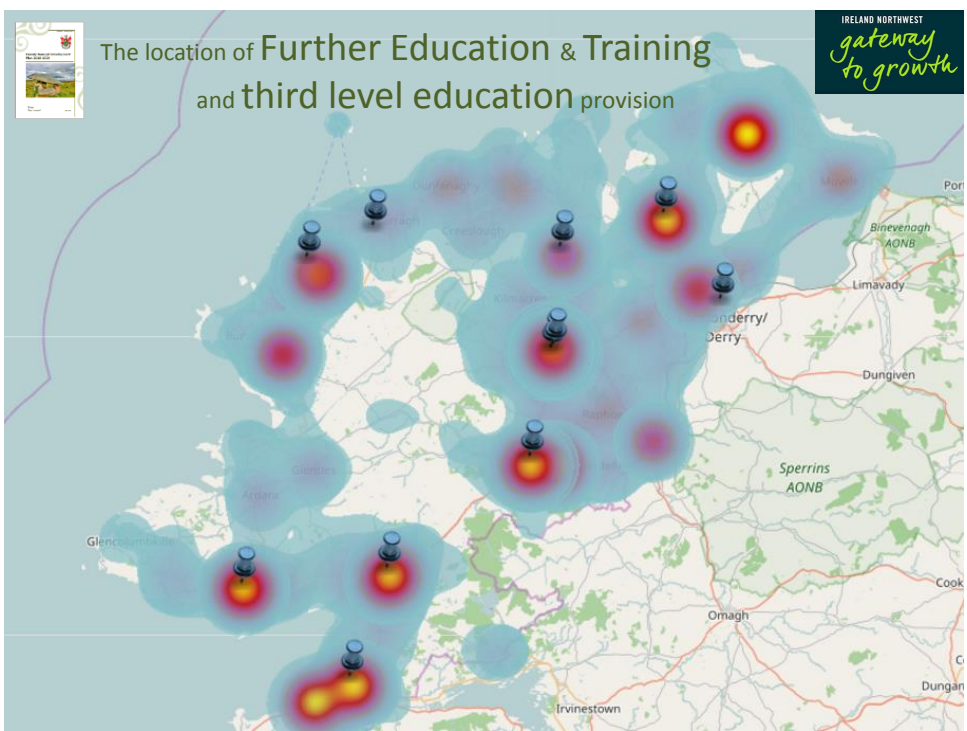






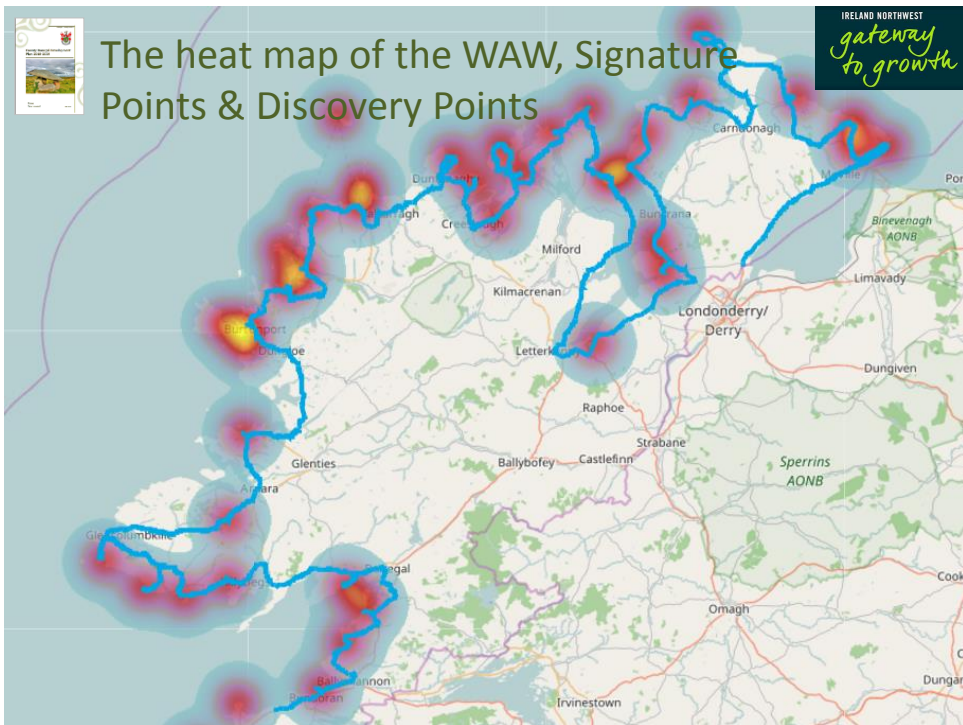


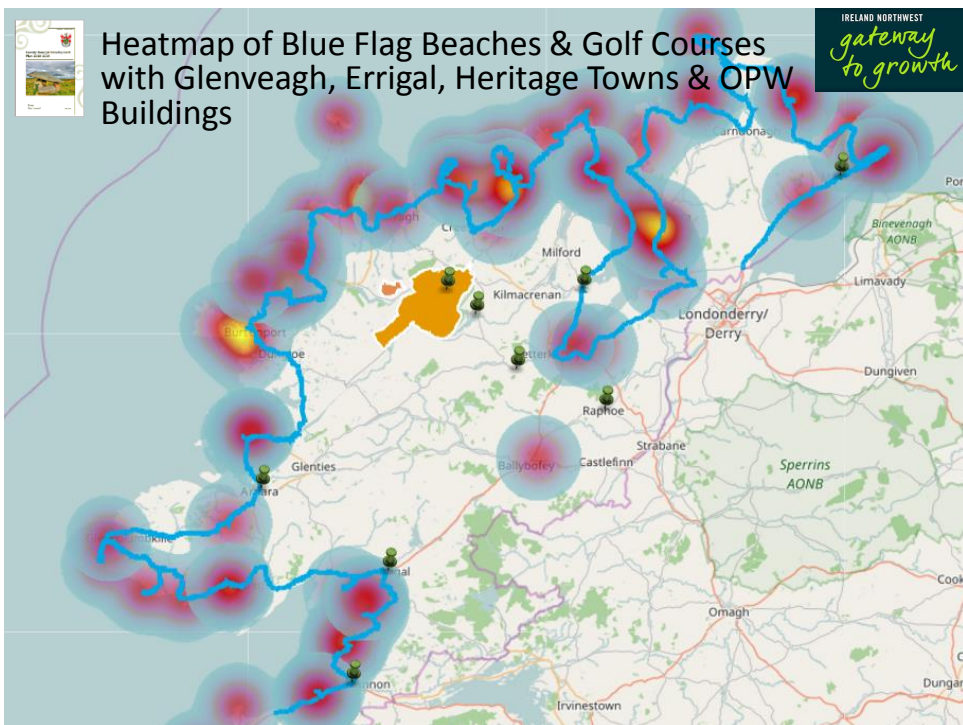
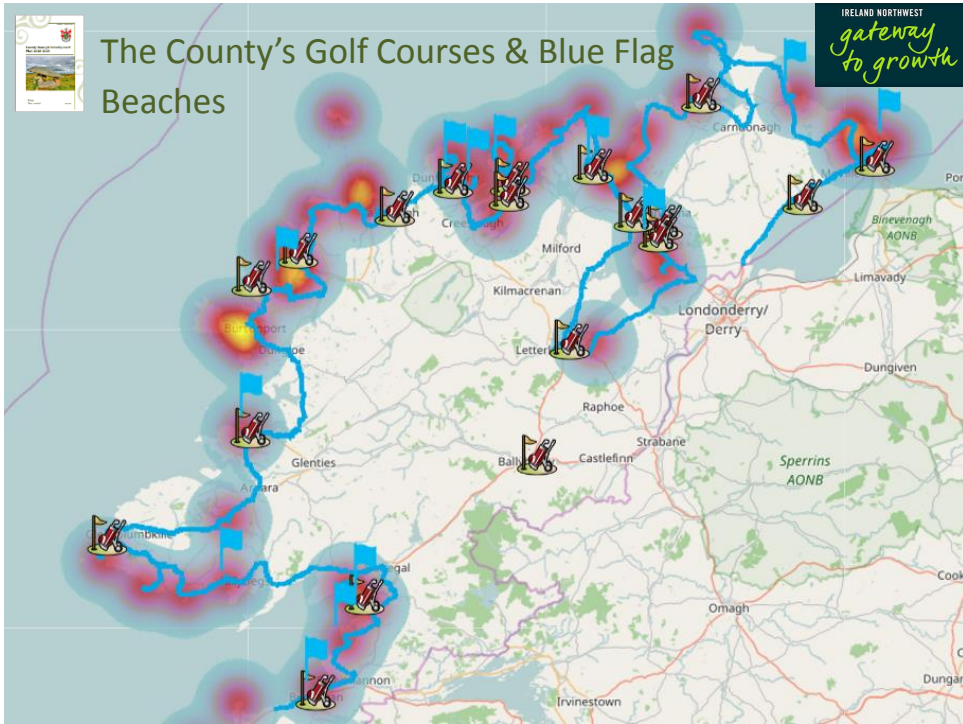


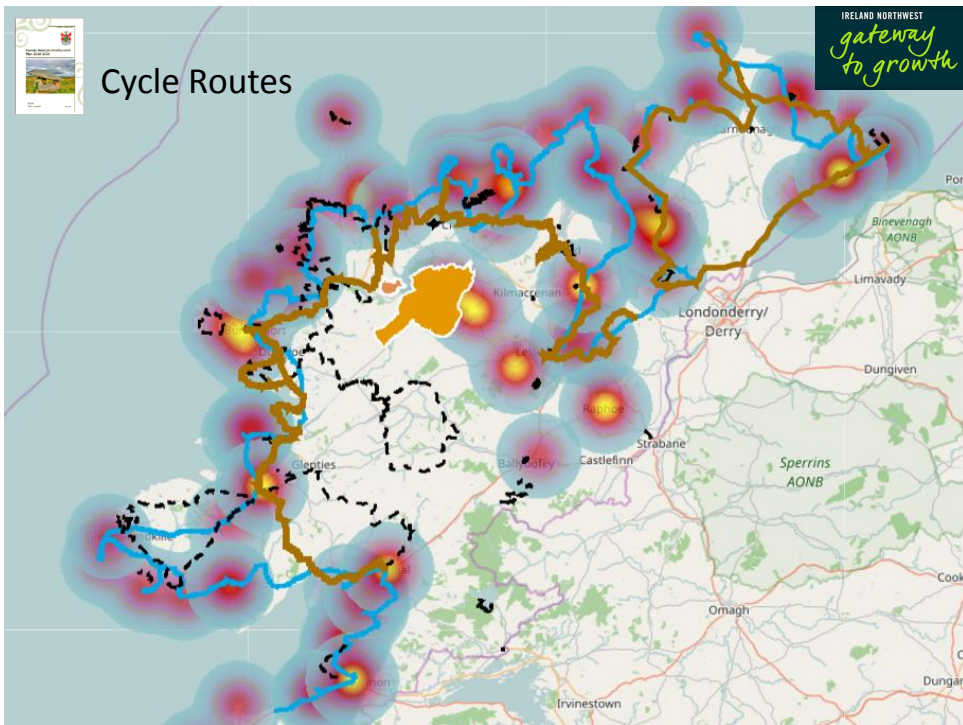
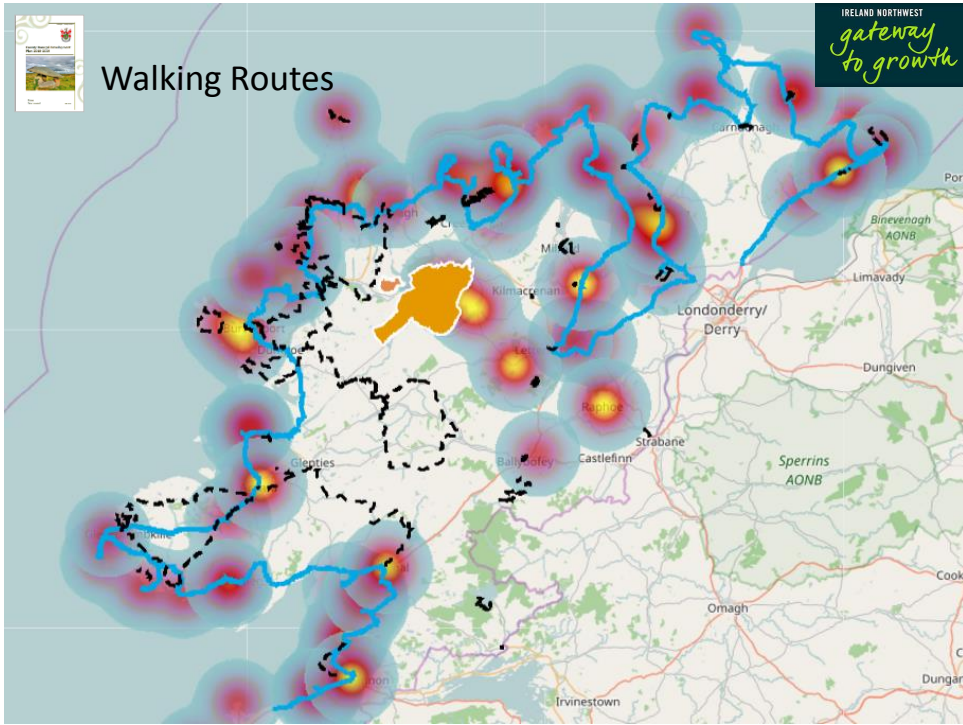


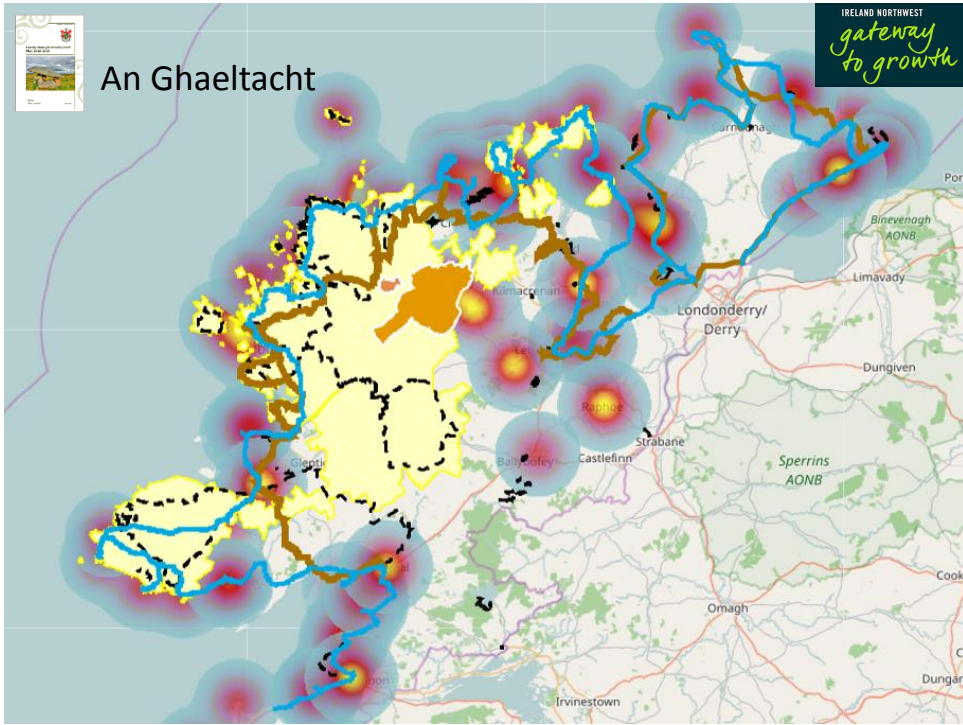












The County's Natural Environment – place making

IRELAND NORTHWEST gateway to growth

Iconic Errigal

LIFE, CULTURE AND ROOM TO GROW

Magherawarden Strand, Portsalon

Horn Head

Coastal sea- life

Poison Glen & Dunlewey Lake



IRELAND NORTHWEST
gateway to growth



Seaside Resorts

Cruise liner market





Killybegs Fishing Fleet

Coastal Horse-riding



Bundoran Surfing





IRELAND NORTHWEST
gateway to growth

MOVILLE
HERITAGE TOWN



BAILE OIÐHREACHTA
BUN AN PHOBAIL



ARDARA
HERITAGE TOWN



BAILE OIÐHREACHTA
ARD AN RÁTHA



RAPHOE
HERITAGE TOWN



BAILE OIÐHREACHTA
RÁTH BHOITH



Lough Eske Castle



Ballyshannon



Heritage Town Brochures

Fanad Lighthouse



Ramelton





The County's environmental resources both natural and built



PROTECTION & PRESERVATION

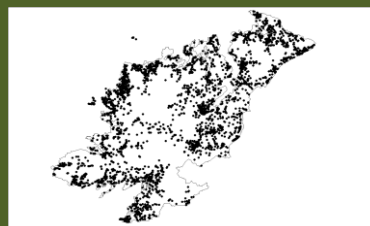
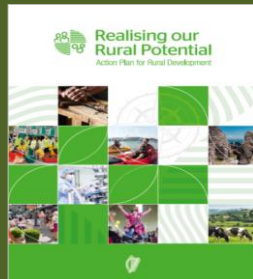
SENSITIVE & APPROPRIATE HARNESSING OF OPPORTUNITY



The role for renewal, regeneration and place-making



CE Report, Nov 2016-
Strategy to continue to consolidate and protect the very unique and special characteristics of our towns and villages remains the appropriate strategy



Vacant residential 2016



Vacant commercial 2016



the County Plan and the National Planning Framework – Key Messages:

IRELAND NORTHWEST
gateway to growth

- **Collaboration in the North West recognised**
- **Place-based focus is of significant value.**
- **CDP is being reviewed – the context for population growth & critical mass**
- **Providing mitigation to Brexit**
- **Capitalising value of skills and education – developing stronger links with Industry & Employers**
- **A Tourism sector of growing importance**
- **Recognition of the critical mass that already exists in the North West**
- **Need for completion of connecting infrastructure [Broadband; N13, N14, N15; N2/A5, A6, N4]**



A process of collaboration and co-ordination

IRELAND NORTHWEST
gateway to growth

"...scarcest resource in cities is not money ... it is (public sector) co-ordination."

Alejandro Alvarez

*TedGlobal
Oct 2014 .*

Thanks for Listening

Eunan Quinn

equinn@donegalcoco.ie

www.donegalcoco.ie

@donegalcouncil

