




INTERNATIONAL CENTRE FOR LOCAL AND REGIONAL DEVELOPMENT



MATCH-UP
Interreg Europe



European Union
European Regional
Development Fund



Tionól Réigiúnach an Deiscirt
Southern Regional Assembly


10 Minute Town & City Framework Rethinking Connectivity

Rose Power, EU Projects Officer, Southern Regional Assembly
rpower@southernassembly.ie

1

MATCH-UP Project

Interreg Europe Priority - Low Carbon Economy



Tionól Réigiúnach an Deiscirt
Southern Regional Assembly

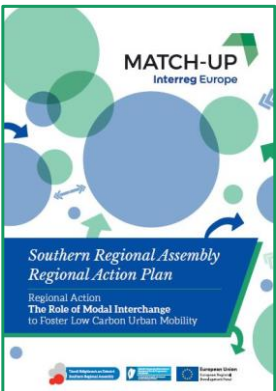
5 Partners

- University of Bologna – Italy
- Southern Regional Assembly – Ireland
- County of Northeim – Germany
- Municipality of Funchal – Portugal
- Municipality of Timișoara – Romania

Objective – Foster low carbon multi modal sustainable transport to reduce air pollution, Co2 emissions and traffic congestion.

How – Through Interregional exchange of experience and good practices and the active support and participation of regional stakeholders.


Result – The development of a Regional Action Plan to develop a 10 Minute Town & City Framework for the Southern Region.



MATCH-UP
Interreg Europe

**Southern Regional Assembly
Regional Action Plan**

Regional Action
**The Role of Modal Interchange
to Foster Low Carbon Urban Mobility**

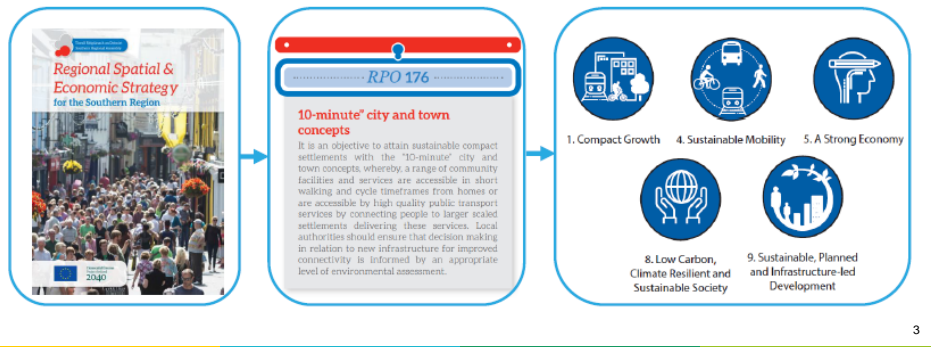


2

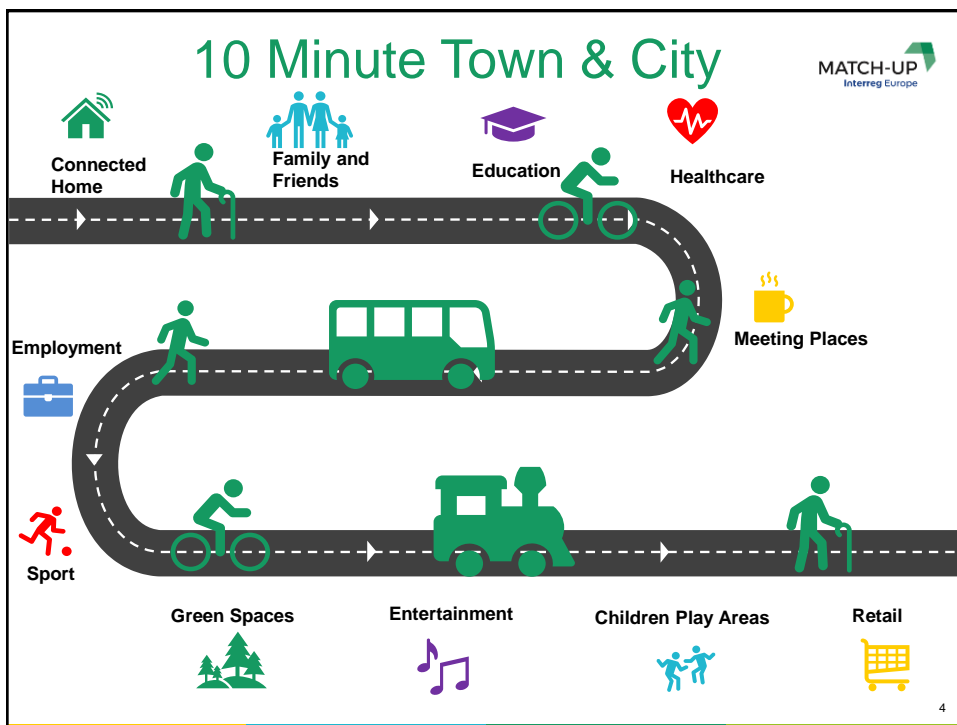
Link to Regional Spatial Planning Strategy



- The RSES sets out the 12 year strategy for the Southern Region.
- It already has a Regional Policy Objective to attain compact growth through the 10 Minute Town & City Concept.
- Through the MATCH-UP project we developed a 10 Minute Town & City Framework to assist Local Authorities in conjunction with ARUP.



3



4

Why do we need 10 Minute Town & City Concept?



- Transport accounts for about 20% of GHG emissions in Ireland (Climate Action Plan 2019)
- Ireland's population is predicted to grow by 1 million by 2040 putting further demand on transport (Project Ireland 2040)
- We continue to have an overreliance on private cars

How do we travel in Ireland?

(Source: National Travel Survey 2016 (all trips))



5

5

How did COVID Impact Transport?



- During lockdown there was a 50% decrease in Nitrogen Dioxide air pollution related to transport (Environmental Protection Agency)
- During lockdown passenger numbers on public transport reduced between 15-20% (National Transport Authority)
- Walking and Cycling emerged as safest modes of travel
- Increased focus on community, liveability and wellbeing
- Accessibility to health care critical
- Move to remote working, co working spaces and more reliance on strong Wi-Fi

We Must Build Back Better

6

6

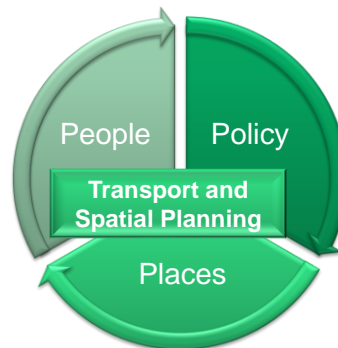
Why 10 Minute Towns & Cities?

MATCH-UP
Interreg Europe



- All citizens want easy access to goods and essential services
- All citizens require clear air and access to green spaces
- All citizens need accessible sustainable transport connectivity

The 10 Minute Town concept acknowledges the interdependence between transport and spatial planning to meet the needs of our citizens



OECD *The Circular Economy in Cities and Regions Synthesis Report 2020*

7

7

How did we create the 10 Minute Town Framework?

MATCH-UP
Interreg Europe



The methodology is divided into two main strands:

1. establishment of baseline conditions and;
 2. accessibility and infrastructural requirements.
- Geographical data for essential services was collected from the official Government open data portal data.gov.ie and from OpenStreetMap, which, was then analysed in ArcGIS. This information was then validated by the relevant Local Authority.
 - A high-level review of the existing walking and cycling network was undertaken on Google Maps and Google Streetview to verify the accuracy of the street network. To conduct the analysis, an 'end to end' routable network was created in a GIS package. The package used in this study was the Network Analyst extension within the Esri ArcGIS package.
 - Public transport interchanges and connections to the wider area were then incorporated into the analysis. Once these parameters were defined, the GIS package determined both the range that can be travelled and the time taken to access all essential services. The 2016 Census data for Small Areas and Workplace Zones was used to calculate the number of people resident or employed within the catchment area.

8

8

How did we create the 10 Minute Town Framework?

MATCH-UP
Interreg Europe

Tionól Réigiúnach an Deiscirt
Southern Regional Assembly

- Invited 3 Local Authorities to discuss and assist us with piloting a mapping exercise on 3 key towns – Carlow, Ennis & Tralee – 1 in each sub-region
- Appointed ARUP Transport Consultants to assist us in creating the Framework
- Presented the framework to elected members of the Assembly to create buy-in
- Discussed the implementation plan with the Department of Transport, NTA and TII with a view to obtaining their support and assistance in rolling out the Framework in the Region
- Regional event to be held July 2021 for Local Authorities
- Establish cross sectoral working group in each Local Authority to implement the Framework and incorporate into Local Development Plans

9

9

Improvements Identified

MATCH-UP
Interreg Europe

Tionól Réigiúnach an Deiscirt
Southern Regional Assembly

Improvements were proposed to address permeability and to increase the 10-minute catchment areas in each of the three Key Towns. These proposals demonstrate what Local Authorities could undertake to develop the concept in their areas. These include:

- Provision of walk/cycle bridges across rivers to connect areas deprived of services
- Provision of new connections between residential estates, for example, through knocking down walls and fences, as well as providing paths between cul-de-sacs;
- Provision of connections to existing walking and cycling facilities;
- Improvement to bus services with provision of local services within the town, increase in frequency and widening the public transport catchment through additional bus stops and new bus services.

10

10

Example Carlow

No formalised access between Kennedy Avenue and Hanover Street



11

Example Ennis

No link between residential estates and potential river walkway



12

Example Tralee

No walking/cycling access from residential properties to greenway

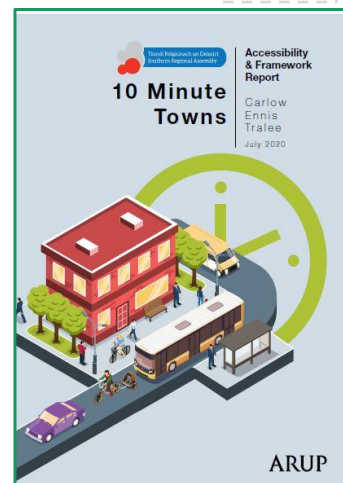


Provide additional accesses to the greenway from Rock Park Avenue, Highfield Grove, Gort na Greine and Mounthawk Park

13

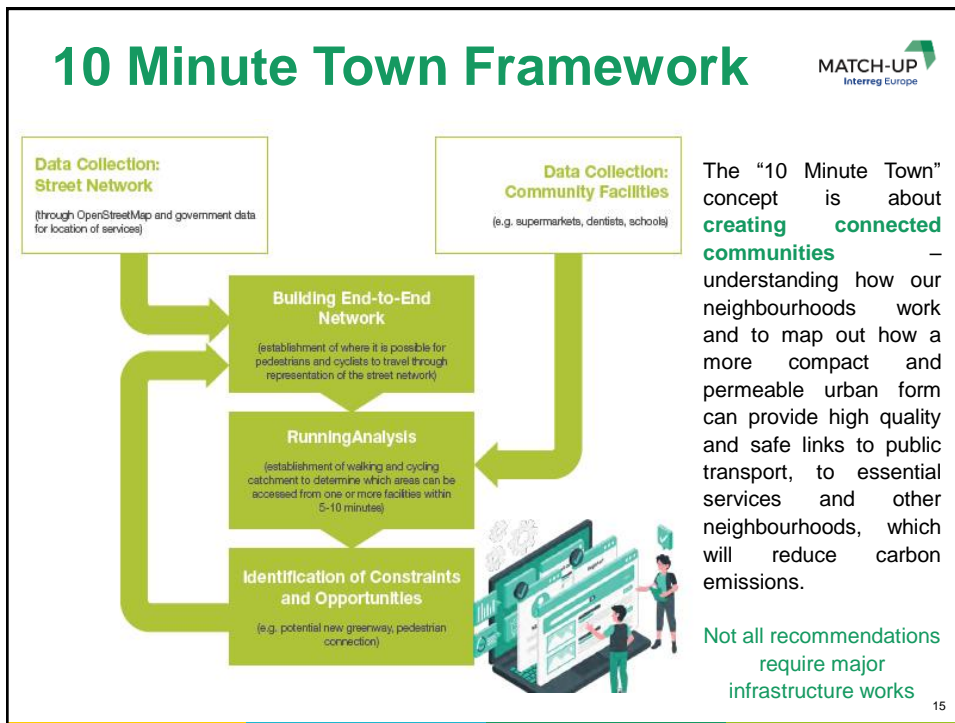
Who do you need at the table?

- Senior Management
- Independent transport consultant
- Elected Members
- Internal to Local Authority - planners, road safety, traffic management, active travel, sports & park officers etc.
- External to Local Authority – environmental and cycling organisations, public representatives, residents etc.



14

14



15

Tionól Réigiúnach an Deiscirt
Southern Regional Assembly

MATCH-UP
Interreg Europe

European Union
European Regional
Development Fund

Thank you!

Link to 10 Minute Town Framework -
<https://www.southernassembly.ie/regional-planning/rse-implementation/10-minute-towns>

16

16