

MID SHANNON TRANSITION



Opportunity and Potential

1

GLOBAL CRISIS – CLIMATE CHANGE THIS OR THIS



The Midland Bord na Mona Bogs offers Ireland a unique opportunity to develop a positive Climate Action project to reduce our carbon footprint, restore nature while sustaining local rural communities into the future.

2

SUGGESTED ISSUES!

'Rural Ireland' context in which the restoration and rehabilitation of industrial and cutover bogs is taking place,

The concepts of 'rural' and 'bogs' together would be very interesting.

Particular challenges present in rural Ireland - what role do the bogs play in this for better or worse?

The successes and challenges of regenerating, restoring and rehabilitating rural landscapes - the highs and lows of what you do

How future challenges could be overcome in your area of expertise, what your roles entail

How might bog restoration benefit communities? What are the key challenges or obstacles in driving this?

Who pays for it?

What will restored cutaway mean for wildlife

3

RURAL IRELAND CONTEXT

Population Decline

Primary Unemployment

Mono-Agriculture

Low Incomes

Poor Services

Ageing Population

Towns in decline

Carbon Energy Production

War on Nature

Cut away Bogs

Reducing Biodiversity

Lack of Amenities

Remote Working

Connected Employment

Diverse local food production

Sustainable Incomes

Quality of Life

Young Families

Exciting Places to live

Renewable Energy

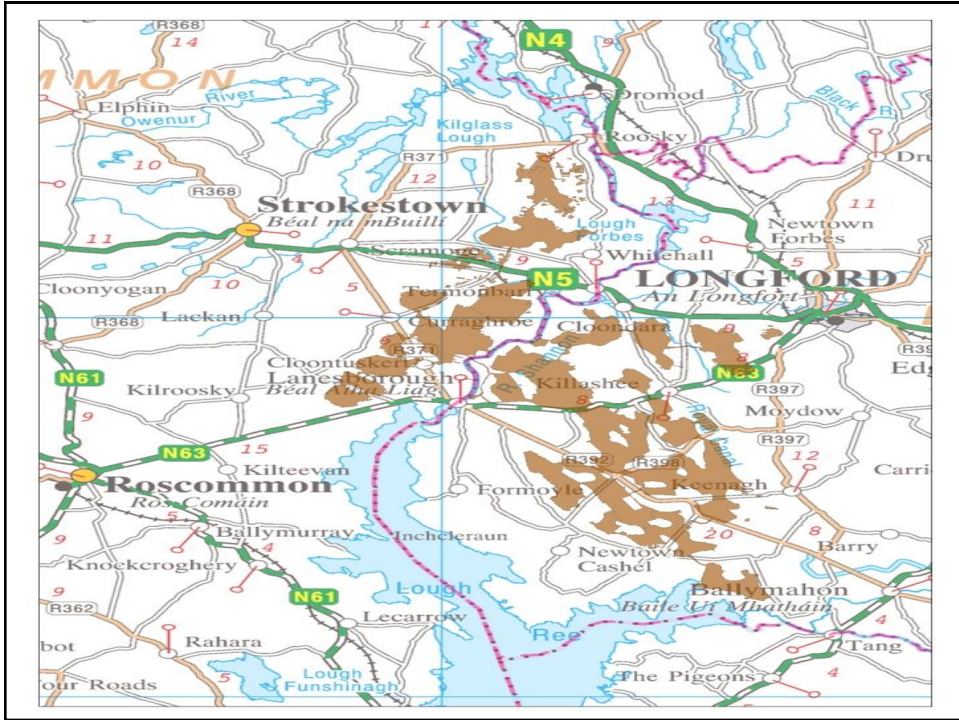
Restoring Nature

Renatured Wetlands

Rich Biodiversity Banks

Multiple Outdoor Amenities

4



7



8

IRON AGE 148 BC



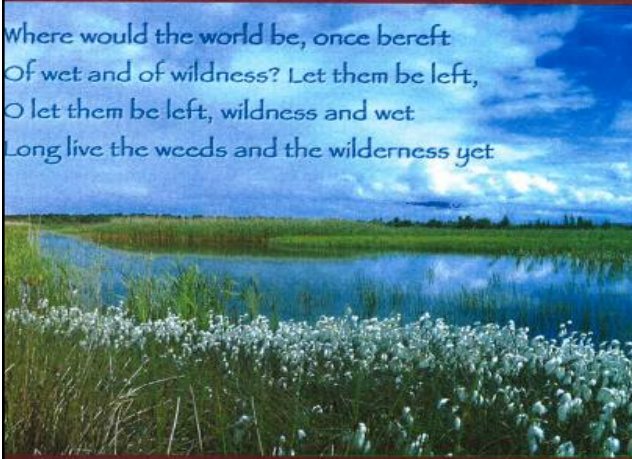
9

A LONG-LIVED WILDERNESS

The Future of the North Midlands Peatland Network

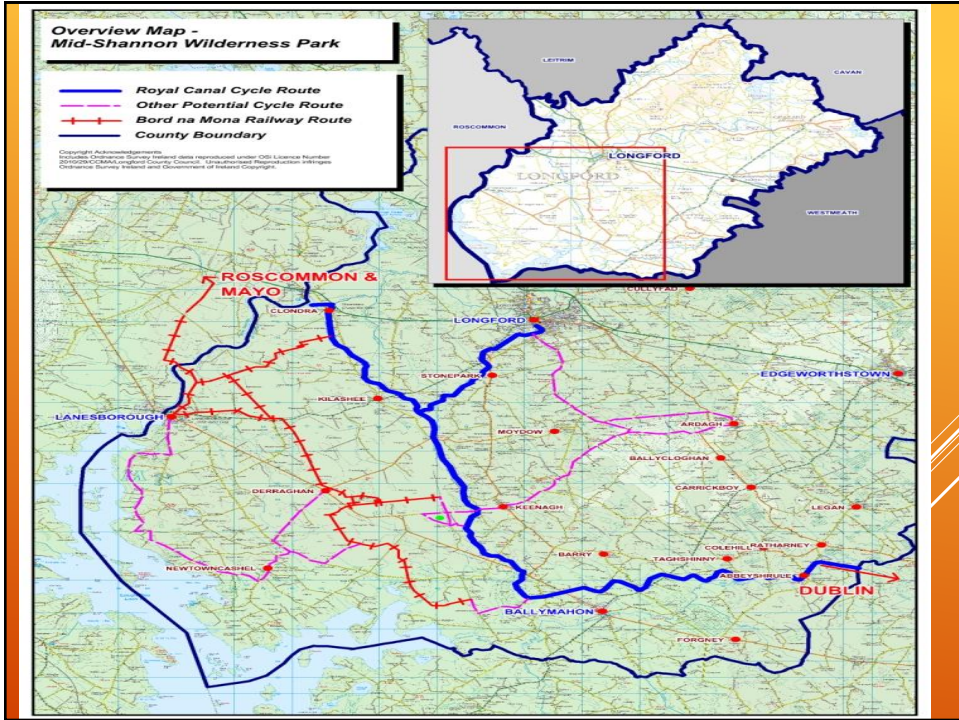
John Feehan

Where would the world be, once bereft
 Of wet and of wildness? Let them be left,
 O let them be left, wildness and wet
 Long live the weeds and the wilderness yet



Richard Lovell Edgeworth. Engraved in 1812 by A. Gadsby, the portrait appeared in the *Biographie* in Maria Edgeworth's edition of the author's letters. © 1925.

10



13

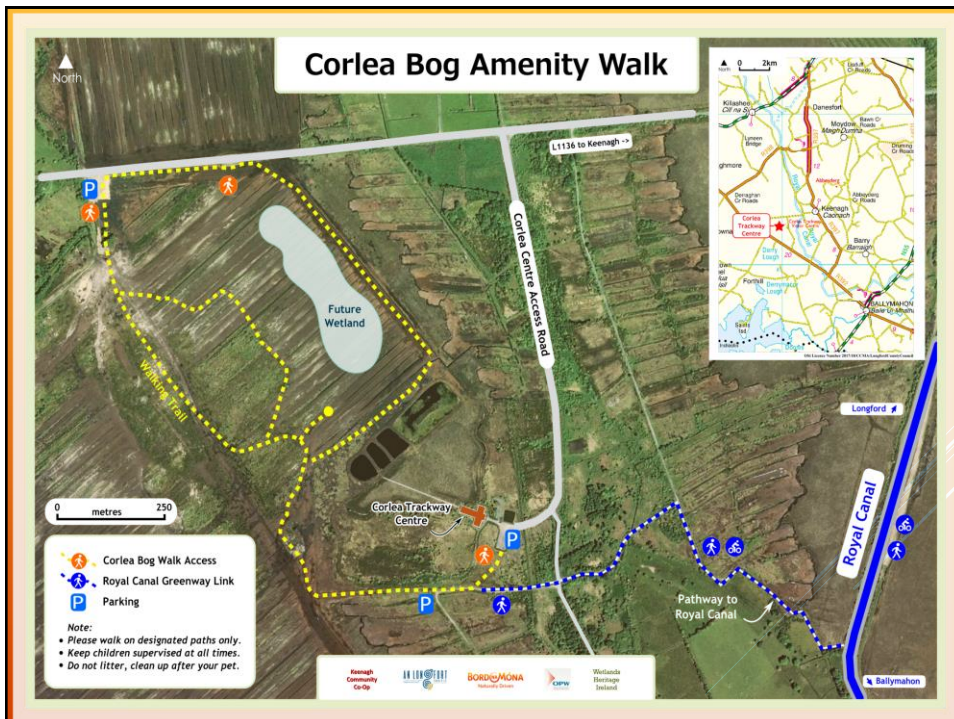


14

▶ Corlea Bog Amenity Walk Project



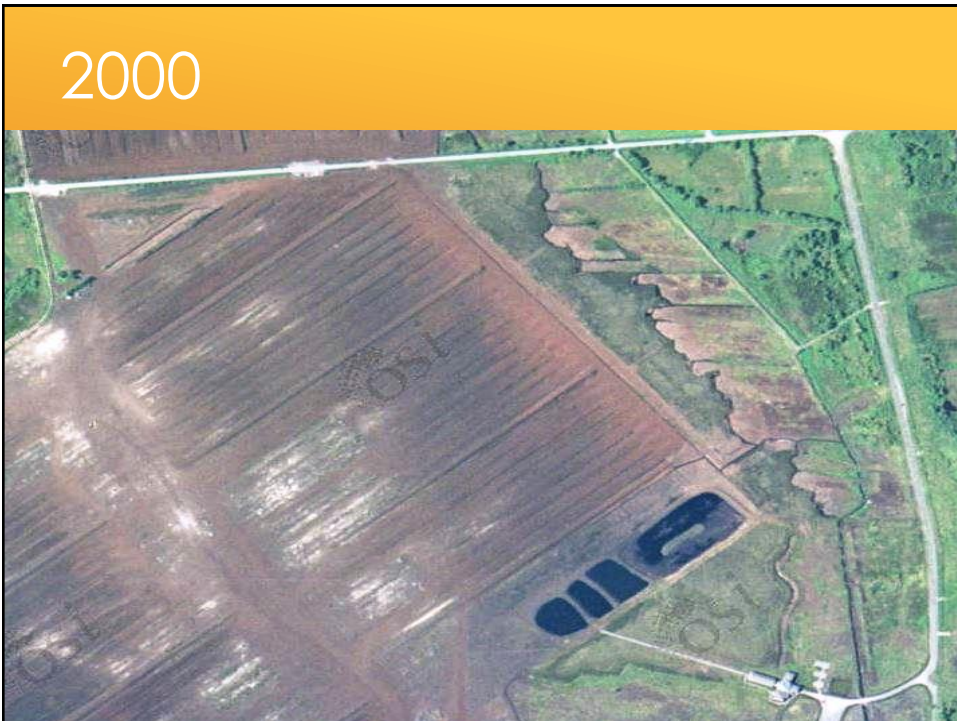
15



16



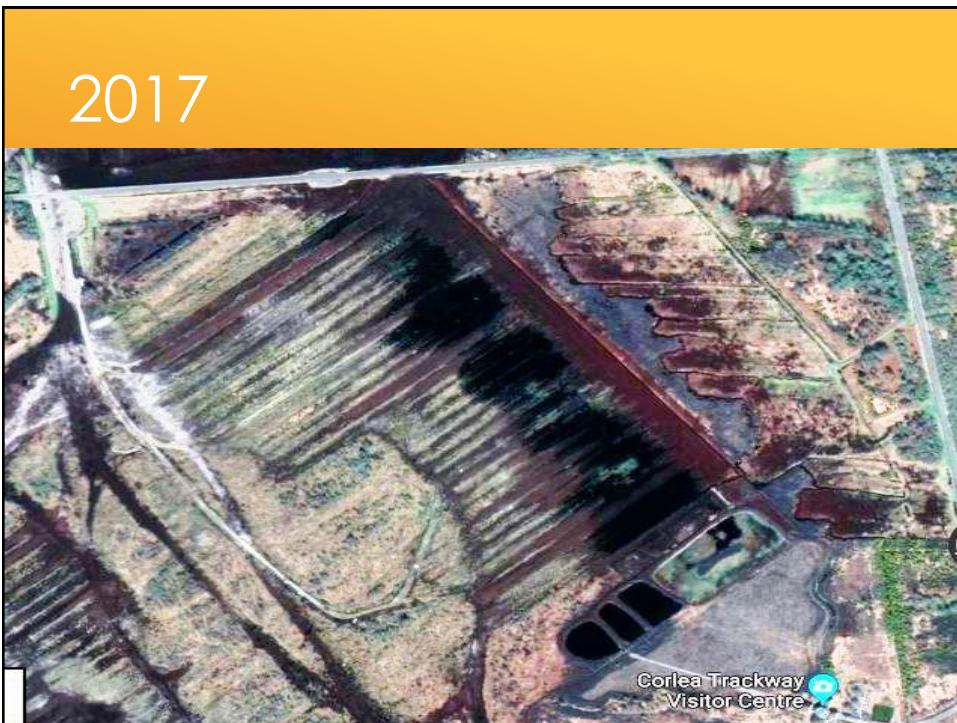
17



18



19



20



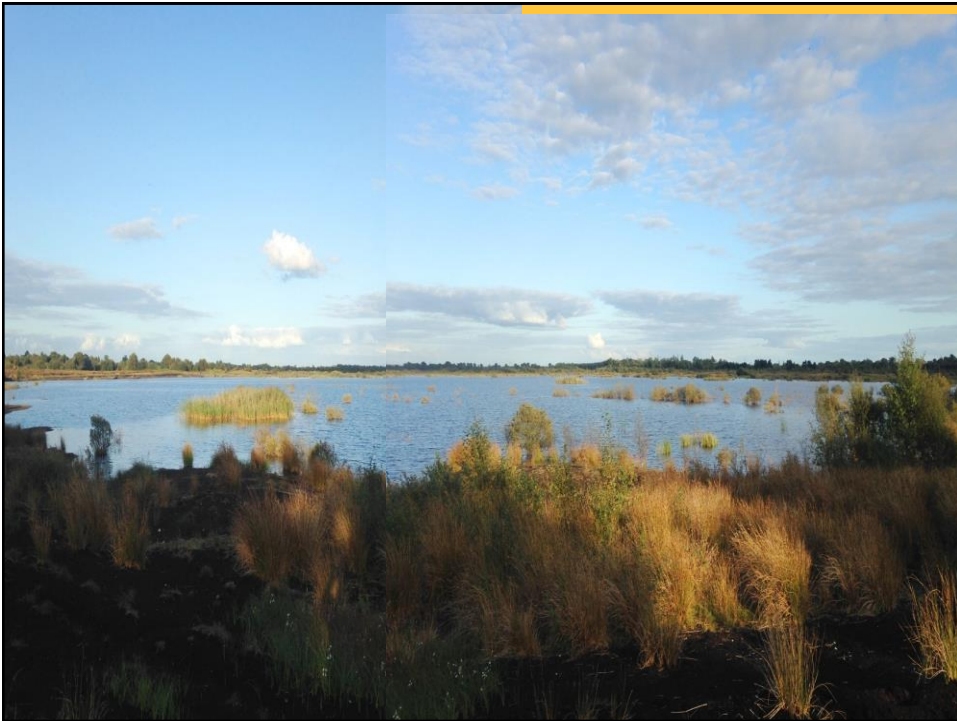
21



22



23



24

WHO PAYS AND WHO WORKS...



25

WHO BENEFITS!



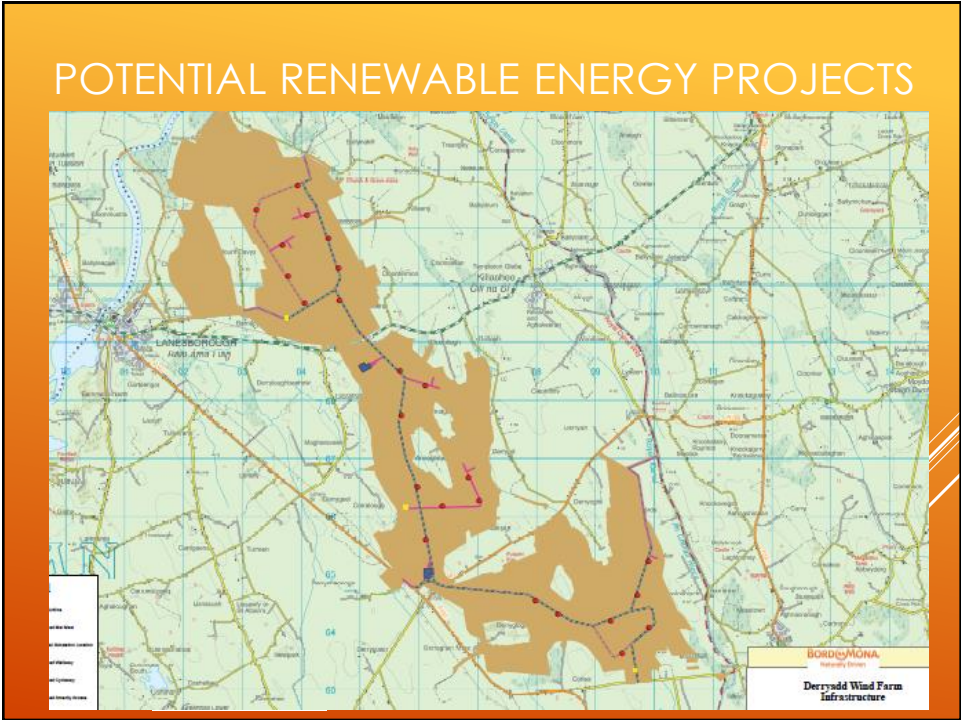
26



27



28



29



30



31



32



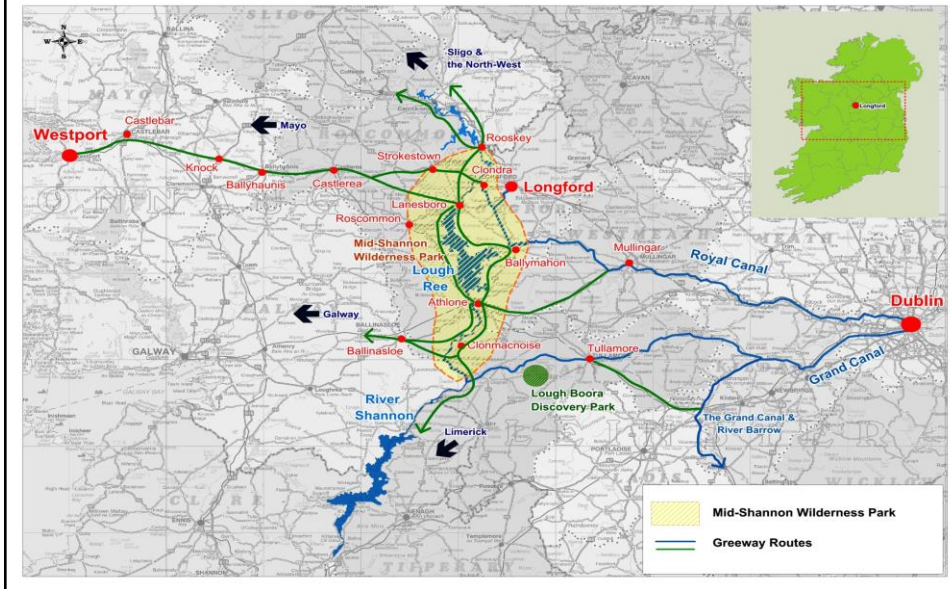
33

COMMUNITIES AND LANDOWNERS ROLE

- ▶ Community-led nature reserves, for example the Keenagh communities initiative at Corlea and Kiltreevan Bog, Roscommon
- ▶ Agri-environment schemes delivered by Farmers and Teagasc
- ▶ Tourism projects, Walking, Cycling, Kayaking, Water Sports and Angling clubs,
- ▶ It provides a robust co-operative basis for the emerging F.I. Hidden Heartlands tourism proposition
- ▶ Habitat management by NPWS, Inland Fisheries Ireland etc.
- ▶ Local Authorities and Bord na Mona employees building the greenways and re-wilding the bogs,
- ▶ New Bord na Mona businesses.
- ▶ Climate Action by restoring nature,
- ▶ Carbon storage and renewable energy initiatives. Energy Hubs.
- ▶ Potential to be a major European Climate Action Project
- ▶ Identifies and promotes business development opportunities in line with the re-wilding of the bogs; the re-positioning of the midlands and the development of new activities.

34

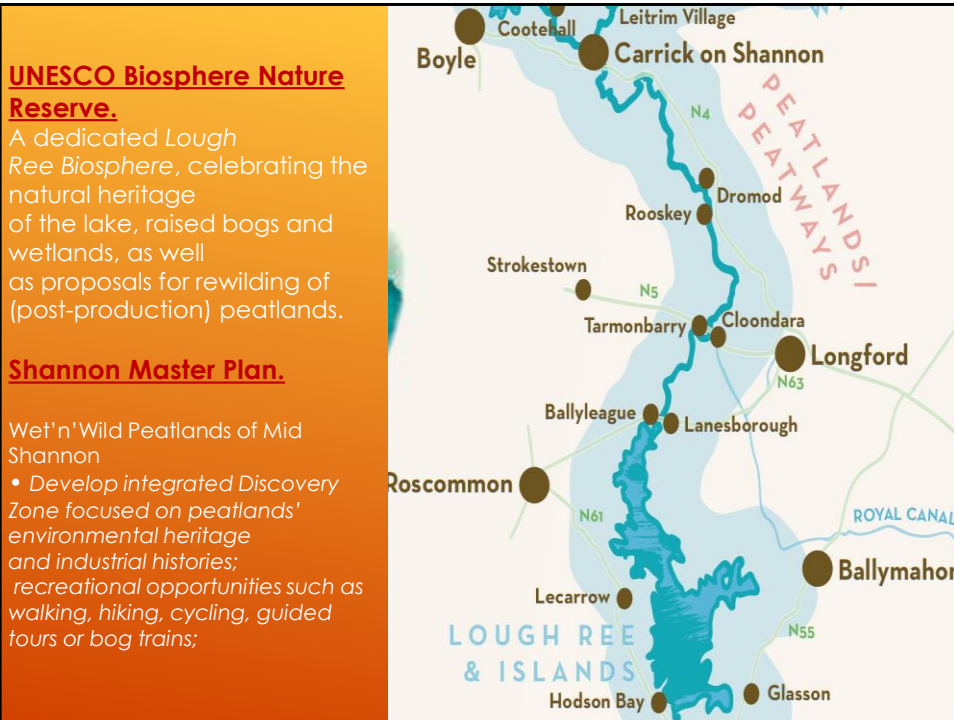
OUR NATIONAL GOAL



35



36



37

LOUGH REE UNESCO BIOSPHERE RESERVE – BIO-GEOGRAPHICAL

Conservation – The importance of the site for conservation of biological and cultural diversity at Regional and/or Global scales.

Development – foster economic and human development which is socio-culturally and ecologically sustainable

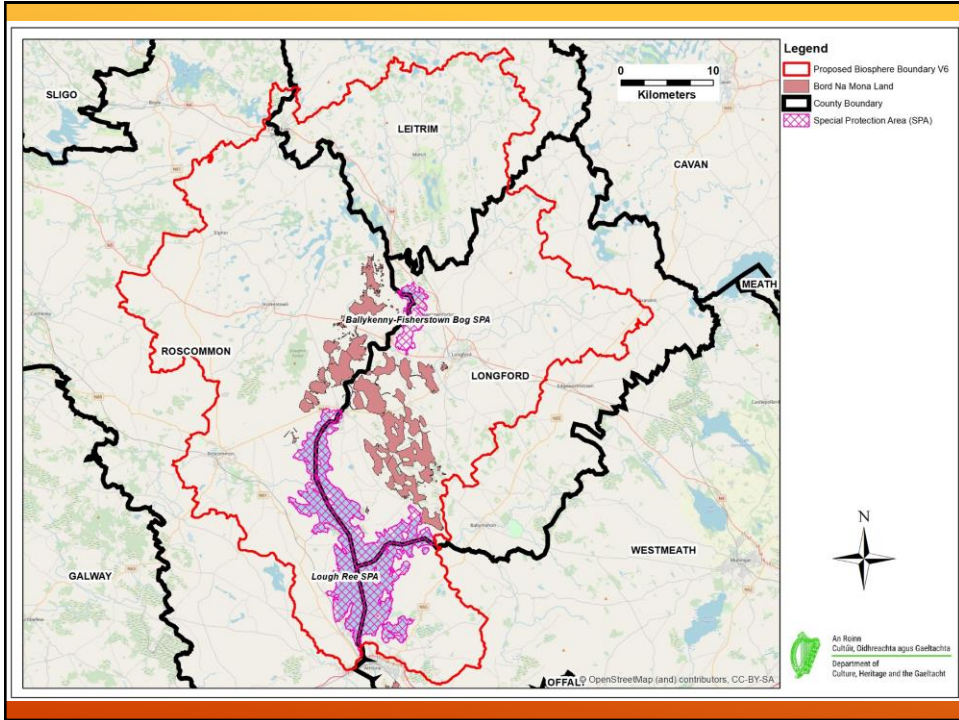
Logistic support – support for demonstration projects, environmental education and training, research and monitoring related to local, nation and global issues.

Boundary – Water Framework Directive, EPA & LAWCO Mandate/Nitrates Directive (Agricultural Catchments)

Align our interests with sub-catchments that feed into Lough Ree using EPA Upper Shannon Catchment natural watershed demarcations.

This will fit in with Management of Ecosystems, Climate Change & Biodiversity.

38



39



40