

Barriers to integrated cross-border MSP on the island of Ireland

Dr. Joseph *Kofi* Ansong

kofi@howellmarine.co.uk

 [@onwonaansong](https://twitter.com/onwonaansong)

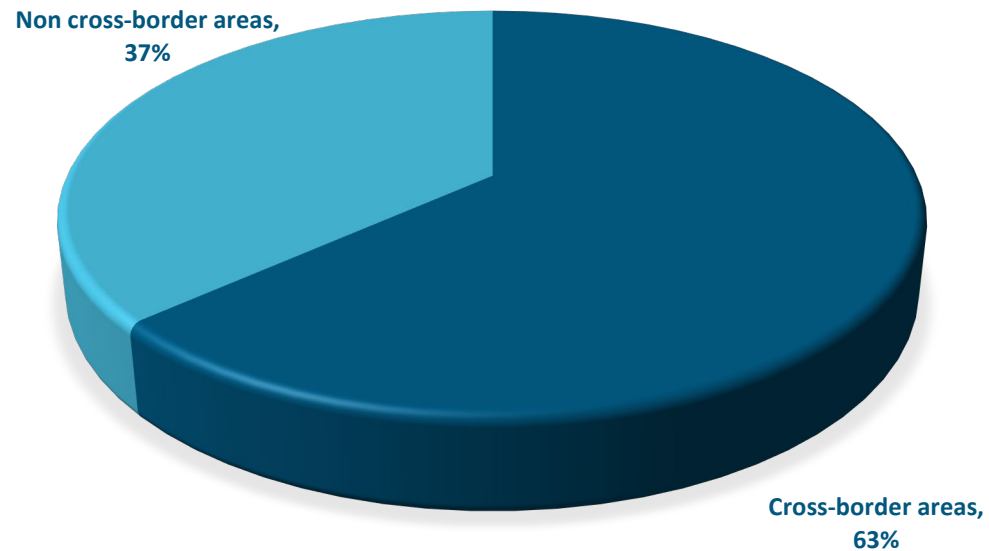
RESPECT THE WATER



Research Rationale

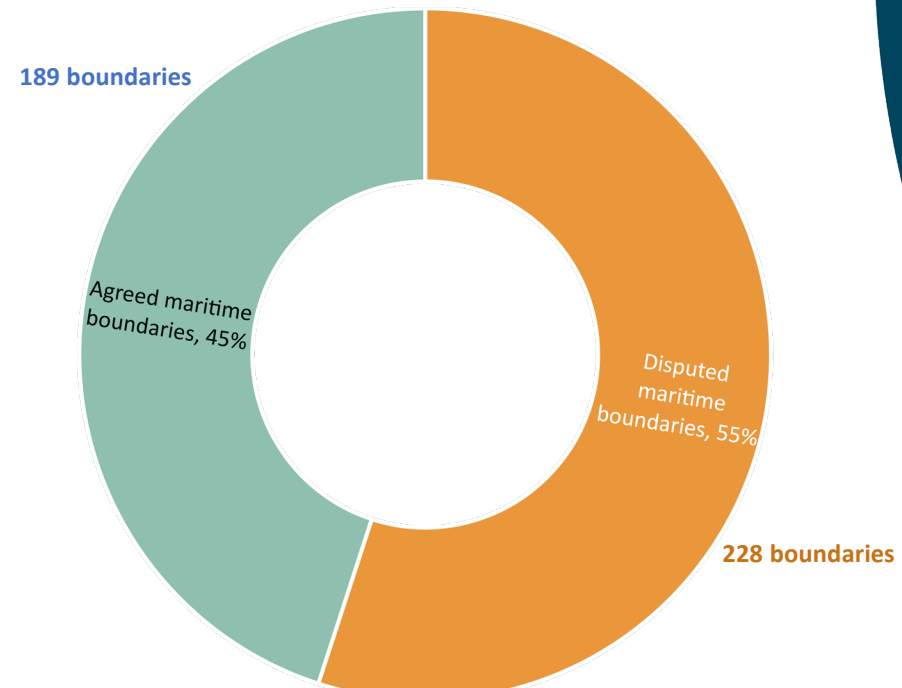
Increasing pressures in cross-border marine areas

Marine Regions under threat



Kuempel et al. (2019)

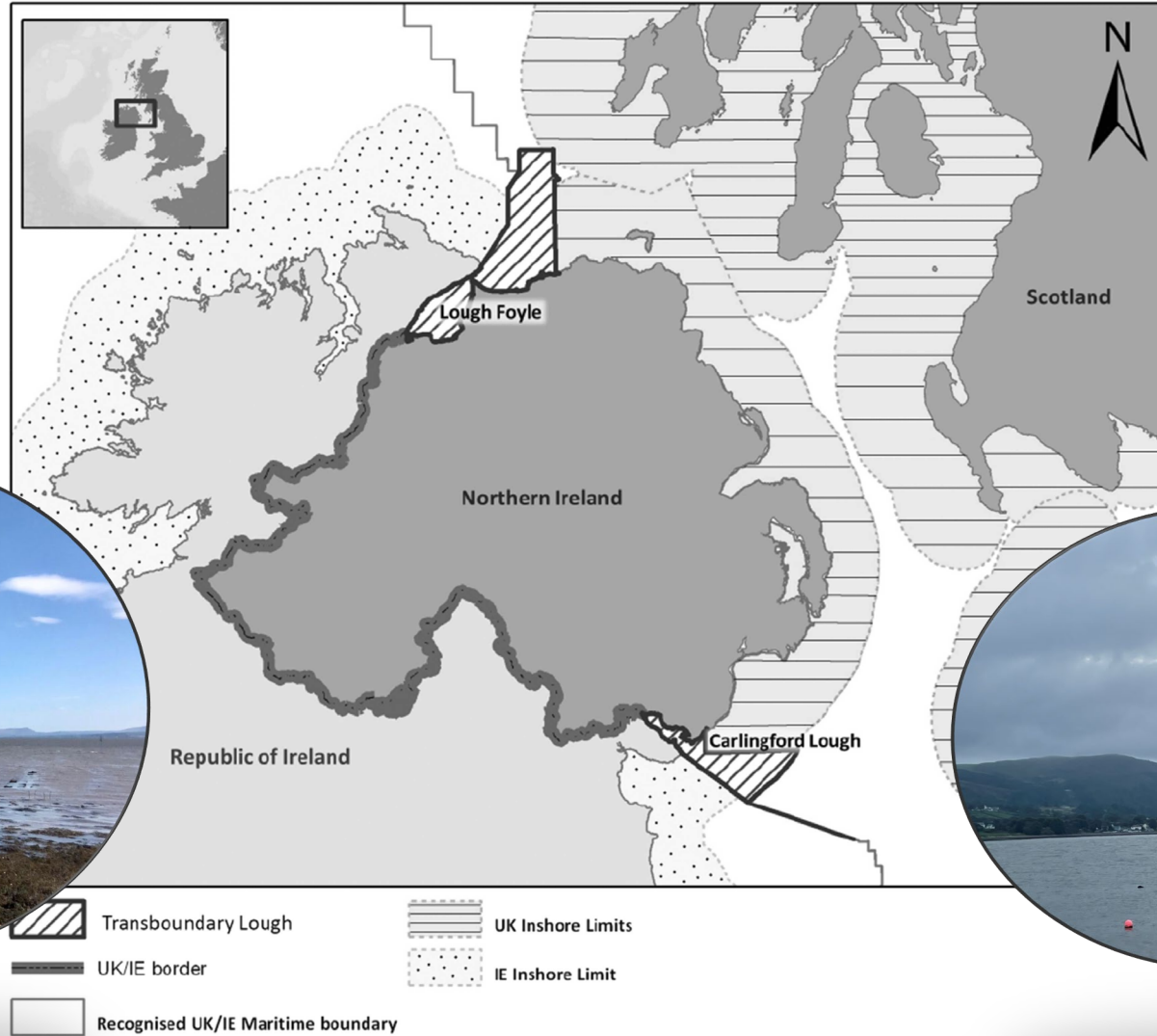
Agreed and Disputed Maritime Boundaries



Østhagen (2019)

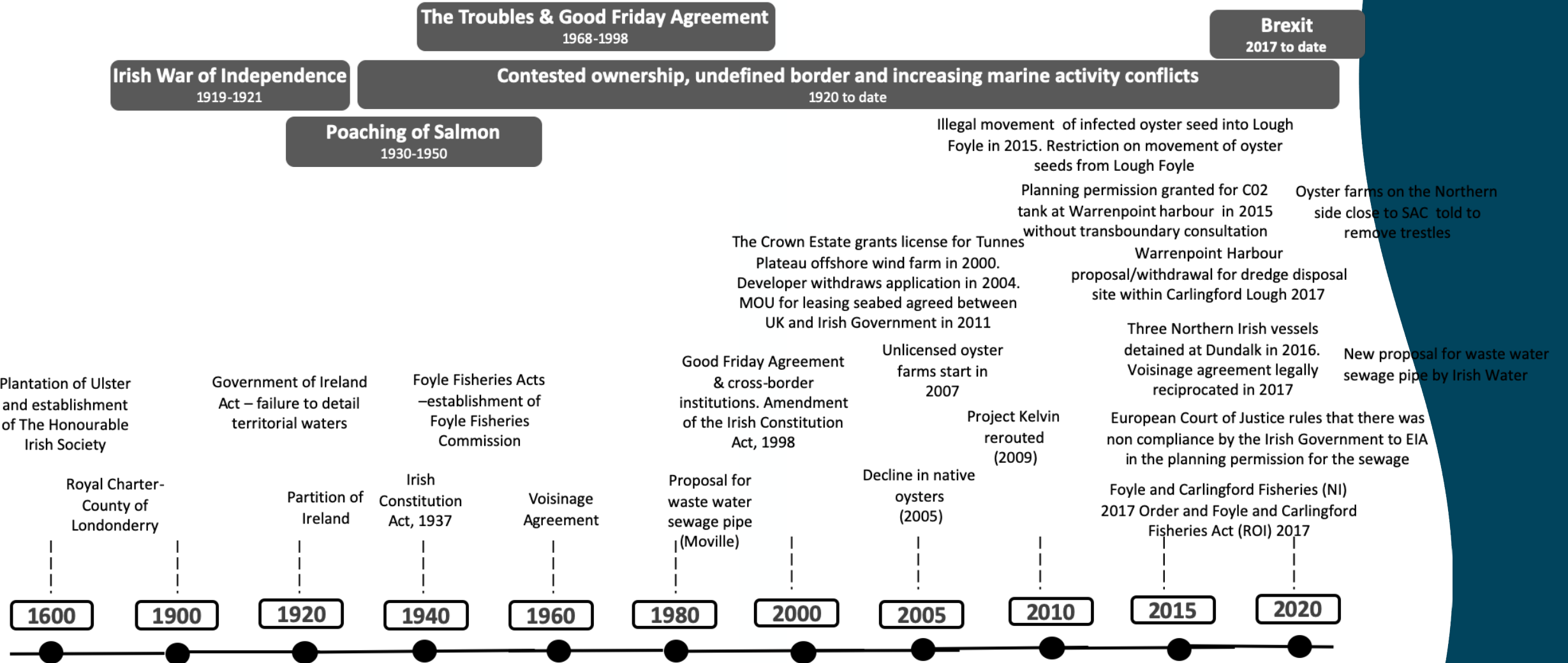
In regions where there is conflict over jurisdictional boundaries and access to resources, policies and agreements focused on sustainability are undermined-World Ocean Assessment II (UN, 2021)

The contested cross-border Loughs

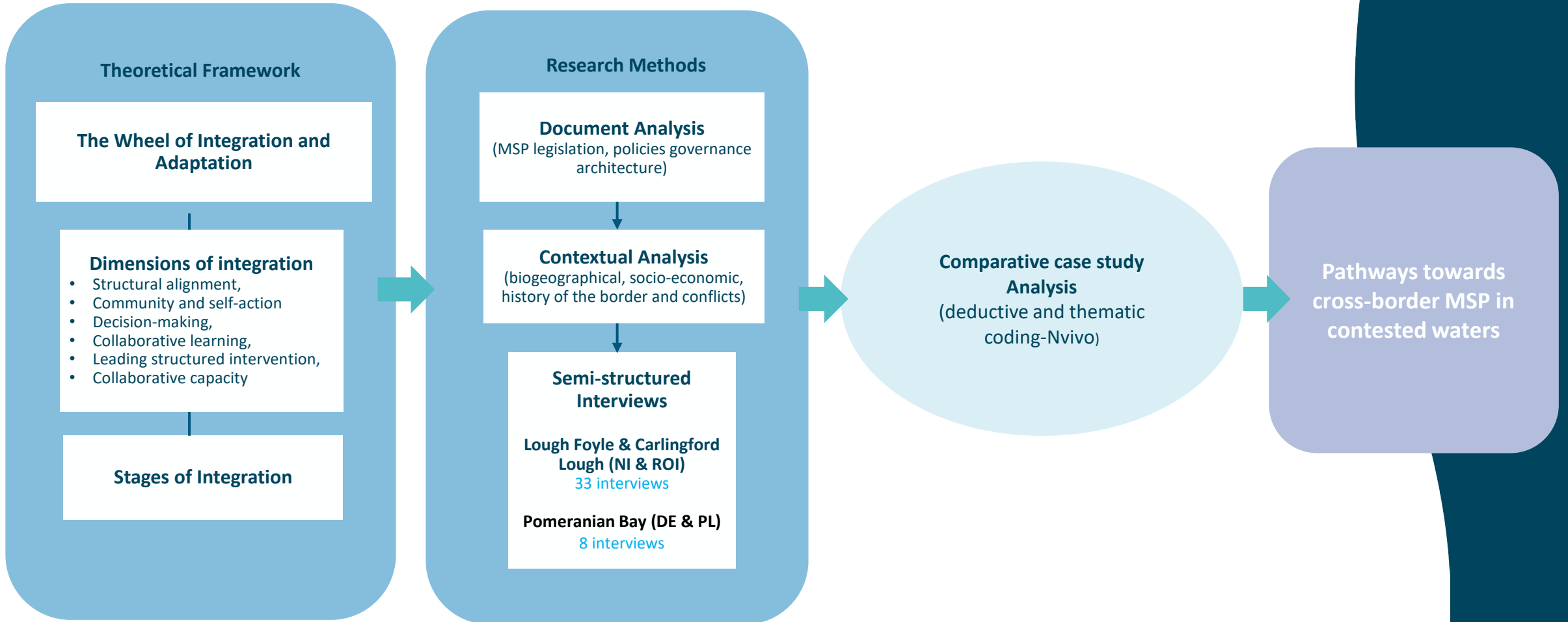


Timeline of management issues

Increasing and conflicting spatial demands?



Research Approach



MSP on the island of Ireland

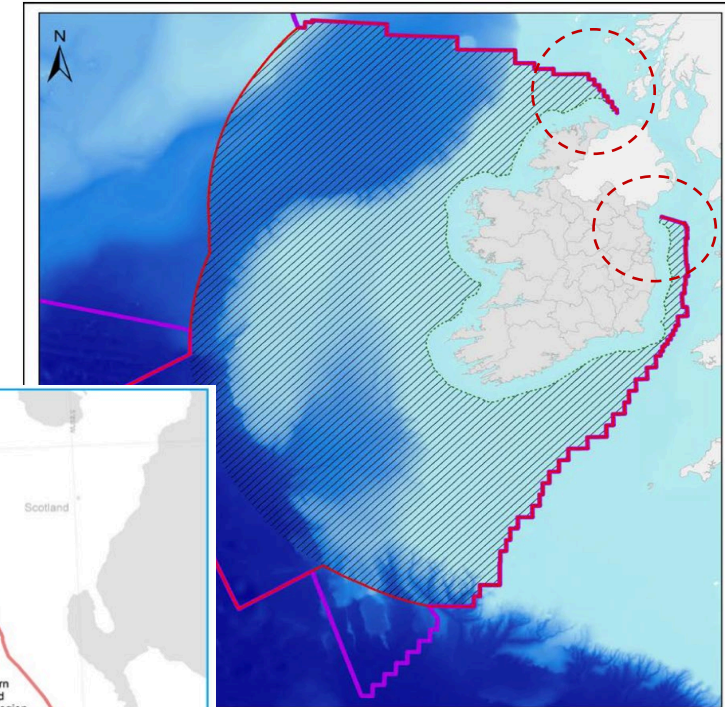
Coherence between the NIMP and the NMFP

Transboundary policies: Specific transboundary policy in the NMFP. No specific transboundary policy in the NIMP but appropriate transboundary consultations are referenced under sector policies.

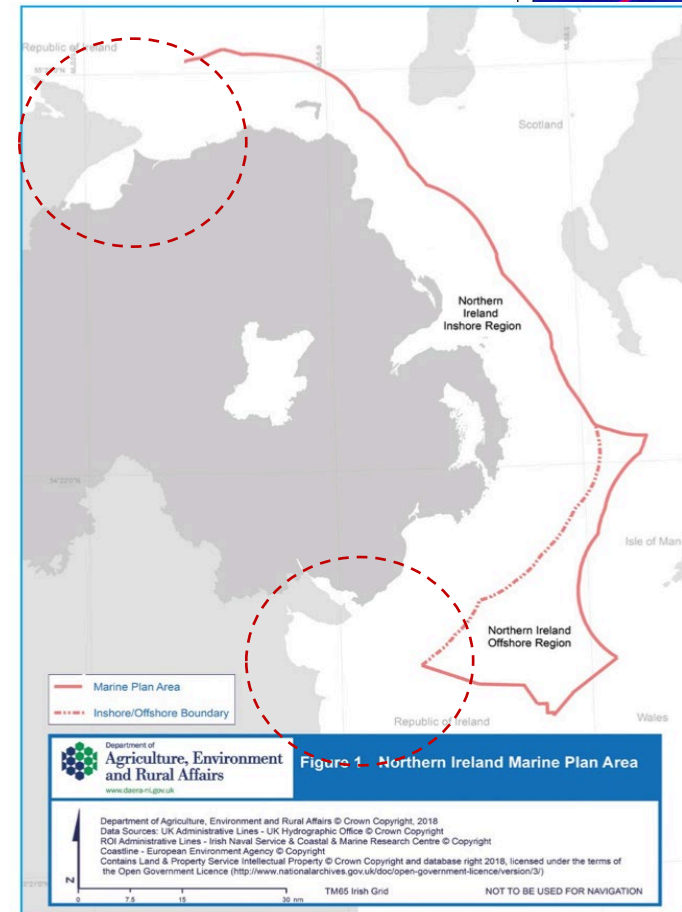
Contested area: Both NIMP and NMFP note that jurisdictional issues in Carlingford Lough and Lough Foyle is outstanding and unresolved.

Connectivity of cross border activities: Most transboundary activities are rarely presented apart from the Wild Atlantic Way and the Giant's Causeway in the NMFP

NMPF



NIMP



reference only. Please refer to the www.marineplan.ie to explore the most up to date framework data.

Boundaries

12-Mile Framework Area
Continental Shelf Boundary

Continental Shelf Limit

12-Mile Framework Area

12-Mile Framework Area

Figure 1. Northern Ireland Marine Plan Area

Department of Agriculture, Environment and Rural Affairs © Crown Copyright, 2018
Data Sources: UK Administrative Lines - UK Hydrographic Office © Crown Copyright
ROI Administrative Lines - Irish Naval Service & Coastal & Marine Research Centre © Copyright
Coastline - European Environment Agency © Copyright
Contains Land & Property Service Intellectual Property © Crown Copyright and database right 2018, licensed under the terms of the Open Government Licence (<http://www.nationalarchives.gov.uk/doc/open-government-licence/version/3/>)
TM65 Irish Grid
NOT TO BE USED FOR NAVIGATION

Barriers to integrated cross-border MSP

Structural Alignment

- Limited cross-border coherence across marine plans and processes
- Ceremonial nature of cross-border structures and institutions; issues of transparency

Decision making process

- Government paying lip service to consultation and engagement
- Diplomatic nature of transboundary consultation and engagement
- Industry and civil service driven decision-making process

Community Action

- Coastal communities late to the party on consultation and access to information
- Intangible and complex consultation MSP documents

Barriers to integrated cross-border MSP

Collaborative Capacity

- Limited capacity for Local Authorities to carry out MSP remit under the MAP Act

Collaborative learning

- Limited appreciation and awareness about MSP
- Limited social and economic evidence especially in the NI Marine Plan

Leading structured intervention

- Lack of political leadership and direction on cross-border priorities and role of local authorities

Intervention pathways for cross-border MSP

Role of Local Authorities?

- **Transparency:** Government updating the public on ownership negotiations and management agreement for aquaculture. **Alternatives:** Joint Development Zones, Transboundary Peace Parks?
- **Community engagement:** Develop comprehensive summary documents and infographics on the MSP to make its contents more understandable for different audiences
- **Coastal Partnerships:** Direct funding from DAERA and DHLGH. Role for Loughs Agency?
- **Regional MSP:** Establish linkages between the NIMP and the NMPF. Map out sectoral conflicts. Coordination between MSP map viewers in NI and ROI.
- **Resourcing:** Local Authorities need staff and training courses on MSP. Continuity of staff to enhance cross-border ties
- **Cross-border platforms:** NW Strategic Growth Partnership and East Border Region can be a platform with political, government and local representatives in NI and ROI for open dialogue on regional MSP



For more information:
Ansong J, Ritchie H, McElduff L (2022) Institutional Barriers to Integrated
Marine Spatial Planning on the island of Ireland. *Marine Policy*: 105082

Thank you!